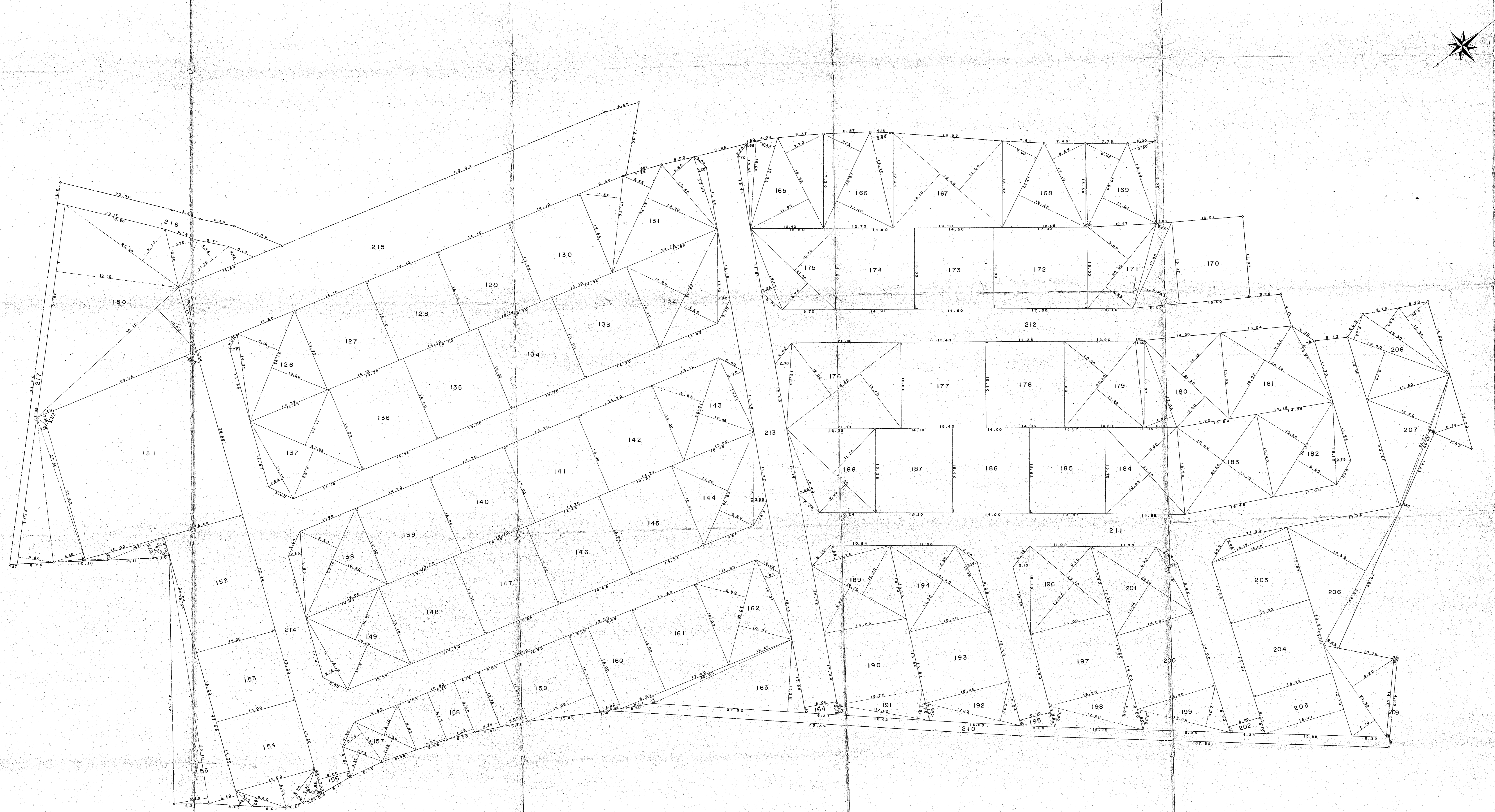


# 上飯野新町三丁目土地区画整理事業確定測量平面図



地番	地積	地番	地積	地番	地積
126	223.04 = 67.47	158	151.77 = 45.73	190	206.15 = 62.36
127	221.51 = 67.00	159	229.77 = 69.50	191	59.50 = 18.00
128	221.22 = 66.92	160	198.22 = 59.96	192	90.84 = 27.48
129	220.94 = 66.83	161	200.00 = 60.50	193	207.14 = 62.66
130	220.66 = 66.75	162	219.11 = 66.28	194	210.23 = 63.59
131	332.93 = 100.71	163	207.85 = 62.78	195	11.25 = 3.40
132	253.78 = 76.77	164	10.35 = 3.13	196	209.82 = 63.47
133	235.20 = 71.15	165	239.50 = 72.45	197	204.52 = 61.87
134	235.20 = 71.15	166	221.35 = 66.96	198	94.60 = 28.61
135	235.20 = 71.15	167	330.52 = 100.01	199	90.37 = 28.85
136	235.50 = 71.15	168	232.72 = 70.40	200	207.76 = 62.85
137	257.61 = 77.93	169	192.57 = 58.25	201	208.67 = 63.12
138	221.02 = 66.86	170	194.61 = 58.97	202	12.30 = 3.72
139	220.50 = 66.70	171	243.38 = 73.62	203	212.53 = 64.38
140	220.50 = 66.70	172	255.00 = 77.14	204	210.00 = 63.52
141	220.50 = 66.70	173	217.50 = 65.79	205	443.17 = 133.31
142	220.50 = 66.70	174	217.50 = 65.79	206	424.44 = 128.59
143	224.25 = 67.83	175	207.74 = 62.84	207	218.33 = 66.05
144	225.41 = 68.18	176	345.85 = 104.56	208	227.35 = 68.70
145	223.23 = 67.53	177	243.32 = 73.60	209	7.87 = 2.38
146	223.37 = 67.57	178	226.73 = 68.58	210	249.70 = 75.83
147	223.64 = 67.65	179	229.22 = 69.34	211	1249.44 = 377.95
148	224.02 = 67.76	180	239.07 = 72.32	212	580.85 = 175.71
149	222.59 = 67.33	181	265.04 = 80.17	213	622.87 = 188.42
150	1019.03 = 308.25	182	217.05 = 65.66	214	1607.98 = 486.41
151	876.02 = 264.99	183	243.00 = 73.51	215	1054.08 = 318.86
152	330.80 = 100.00	184	217.18 = 65.69	216	154.84 = 46.84
153	198.00 = 59.89	185	217.55 = 65.81	217	89.78 = 27.16
154	199.00 = 59.89	186	217.77 = 65.87		
155	337.12 = 101.98	187	217.49 = 65.79		
156	10.50 = 3.17	188	222.20 = 67.21		
157	101.80 = 30.79	189	216.54 = 65.50		