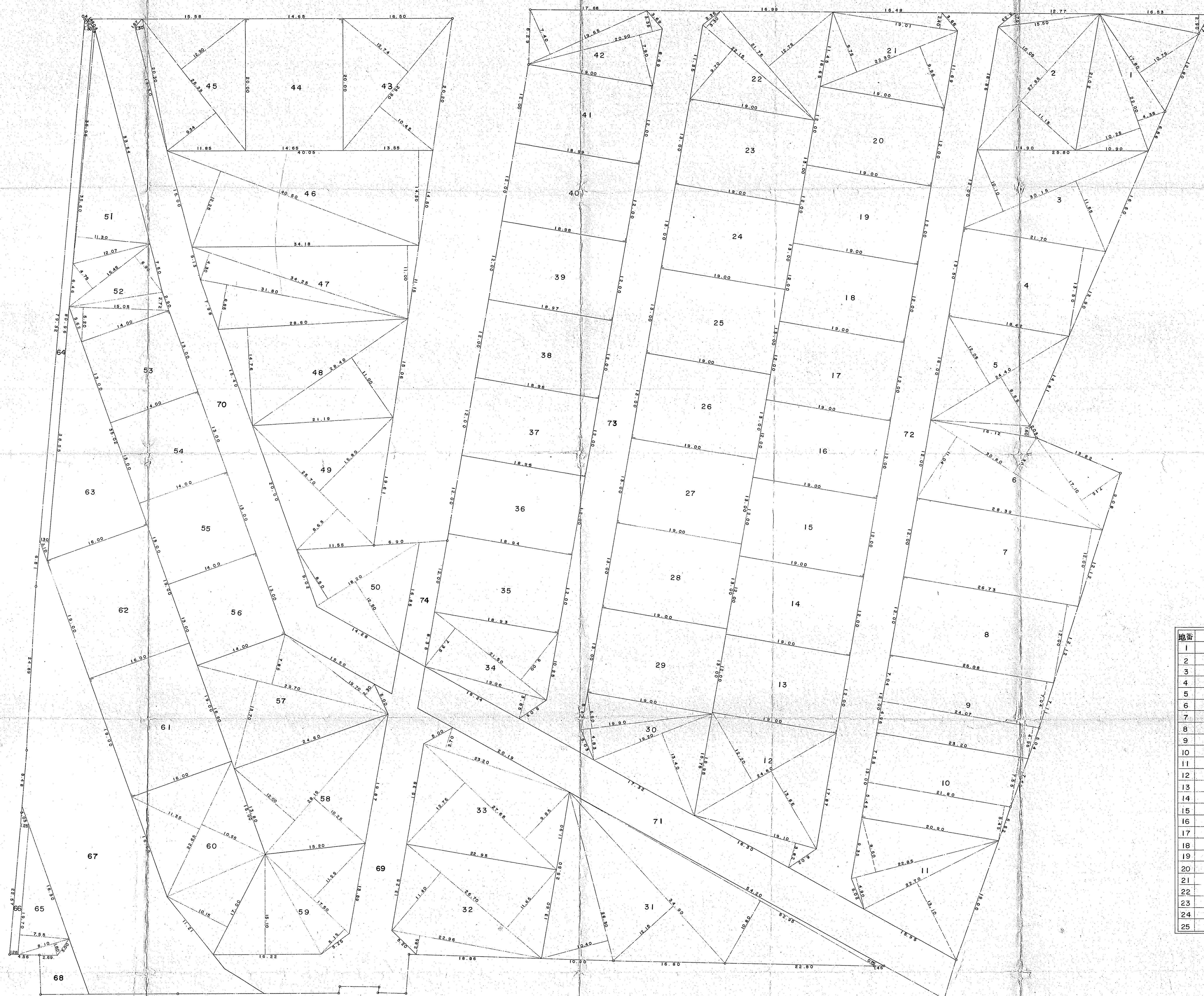
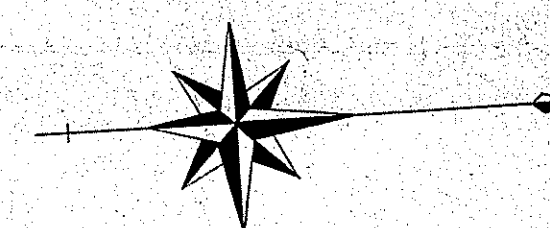


田中町土地区画整理事業確定測量平面図

Scale = 1:250 M



地番	地積	地番	地積	地番	地積
1	280.24 = 84.77	26	247.00' = 74.72	51	206.53' = 62.47
2	306.65' = 92.76	27	247.00' = 74.72	52	149.59' = 45.25
3	326.37' = 98.72	28	247.00' = 74.72	53	182.00' = 55.05
4	270.81' = 81.92	29	247.00' = 74.72	54	182.00' = 55.05
5	264.21' = 79.92	30	231.42' = 70.00	55	182.00' = 55.05
6	328.16' = 99.27	31	655.03' = 198.14	56	182.00' = 55.05
7	330.72' = 100.04	32	340.43' = 102.98	57	342.67' = 103.66
8	310.86' = 94.03	33	356.36' = 107.49	58	313.16' = 94.73
9	290.23' = 87.79	34	212.33' = 64.23	59	268.58' = 81.24
10	286.23' = 86.58	35	227.22' = 68.73	60	334.29' = 101.12
11	301.78' = 91.29	36	227.34' = 68.77	61	304.00' = 91.96
12	357.02' = 108.00	37	227.46' = 68.80	62	304.00' = 91.96
13	228.00' = 68.97	38	227.58' = 68.84	63	280.16' = 84.75
14	228.00' = 68.97	39	227.70' = 68.88	64	104.44' = 31.59
15	228.00' = 68.97	40	227.82' = 68.91	65	81.65' = 24.70
16	228.00' = 68.97	41	227.94' = 68.95	66	26.41' = 7.99
17	228.00' = 68.97	42	190.26' = 57.55	67	880.51' = 266.35
18	228.00' = 68.97	43	300.31' = 90.84	68	40.80' = 12.34
19	228.00' = 68.97	44	293.00' = 88.63	69	431.94' = 130.66
20	228.00' = 68.97	45	287.48' = 86.96	70	671.79' = 203.21
21	242.46' = 73.34	46	534.42' = 161.66	71	548.13' = 165.81
22	282.63' = 85.49	47	370.54' = 112.09	72	826.97' = 250.16
23	247.00' = 74.72	48	367.26' = 111.09	73	691.84' = 209.28
24	247.00' = 74.72	49	314.18' = 95.04	74	72.30' = 21.87
25	247.00' = 74.72	50	193.83' = 58.63		21578.04