



Landslide Hazard Map

Hosoiri Area

How to read this map

- Designated emergency shelters
- Emergency heliport
- Facilities for people requiring special care
- Emergency wireless system
- District border
- Evacuation direction

Landslide Alert Area

- Landslip (collapse of land on steep slopes)
- Special Alert Area
- Mudslide
- Special Alert Area
- Landslide

Hosoiri Hokubu District

List of Facilities

| Facility Name | Address | Phone Number |
|----------------------------------|------------------|--------------|
| Jinzumidori Elementary School | 405 Nirehara | 076-485-2013 |
| Nirehara Junior High School | 405 Nirehara | 076-485-2014 |
| Nirehara Community Hall | 1280-1 Nirehara | — |
| Hosoiri Community Hall | 1128 Nirehara | 076-485-9004 |
| Ioridani Area Community Hall | 575-1 Ioridani | — |
| Nishisasazu Village Center | 258 Nishi-Sasazu | — |
| Iwaine Area Community Hall | 419 Iwaine | — |
| Toyouma Prefecture Rowing Course | 20-1 Iwaine | 076-485-2104 |
| Tenkomori Lawn Square | within Wariyama | — |
| Shita Hokubu Area Ground | within Nunoshiri | — |

Evacuation sites marked with (yellow circle) are located within the Landslide Special Hazard Areas. Please note that they may not be opened as evacuation sites.

Facilities for people requiring special care

| Facility Name | Address | Phone Number |
|------------------------|----------------|--------------|
| Hosoiri Nursery School | 704-2 Nirehara | — |

Hosoiri Nambu District

List of Facilities

| Facility Name | Address | Phone Number |
|-------------------------------|-----------------|--------------|
| Katakake Area Community Hall | 1981-1 Katakake | — |
| Hosoiri Nambu Community Hall | 851-1 Inotani | 076-484-1002 |
| Inotani Sekisyo Museum | 978-4 Inotani | 076-484-1007 |
| Kanidera Area Community Hall | 153 Kanidera | 076-484-1046 |
| Roadside Station Hosoiri | within Katakake | — |
| A Clear Space within Kanidera | within Kanidera | — |

Evacuation sites marked with (yellow circle) are located within the Landslide Special Hazard Areas. Please note that they may not be opened as evacuation sites.

About the "Disaster Prevention Information"

Gathering information via the Internet, etc.

Gather and utilize useful information on the Internet to protect yourself.

Toyouma City Website PC/Mobile phone
You can check emergency information about disasters, evacuations, etc.
PC/Mobile phone: <https://www.city.toyouma.jp/index.html>

TOYAMA BOUSAI WEB PC/Mobile phone
Weather, Meteorology, Earthquake, Tsunami, Volcano, Nuclear Information, Landslides, river
PC/Mobile phone: <https://www.toyouma-bousai.jp/index.html>

Real-time Risk Map PC/Mobile phone
You can check risk of disasters caused by heavy rain and flooding.
Real-time Risk Map: <https://www.city.toyouma.jp/real-time-risk-map/>

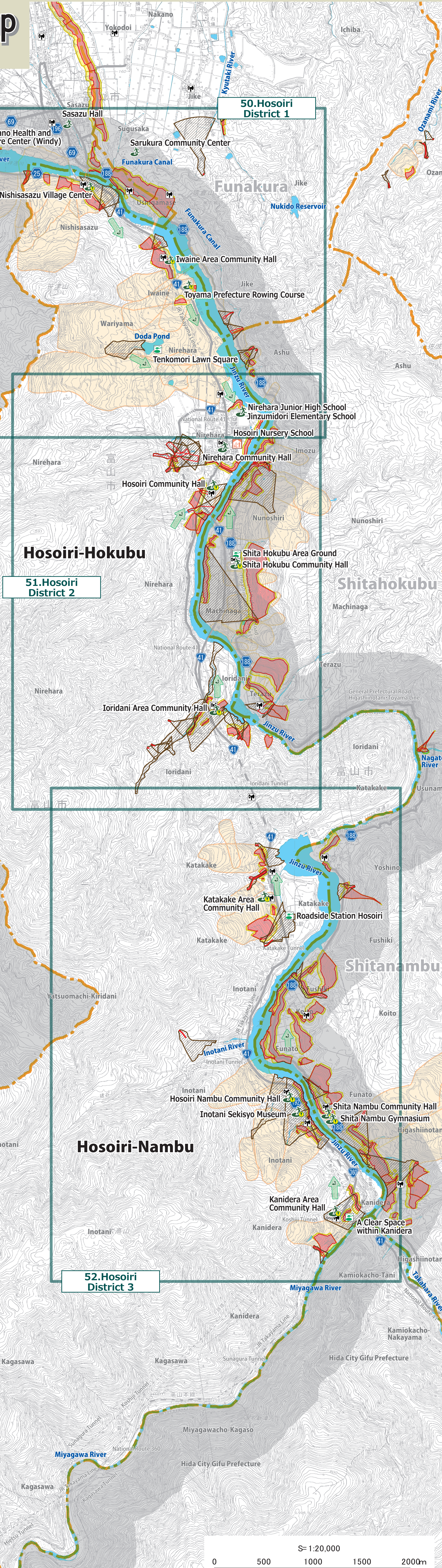
Social media, etc. PC/Mobile phone
You can check information about disasters and evacuations on your computer, cell phone or smart phone.
Toyouma City Disaster Prevention X (formerly Twitter): https://twitter.com/bousai_toyouma
Yahoo! Disaster Prevention App: <https://www.city.toyouma.jp/yahoo-disaster-prevention-app/>

Toyouma City Early Warning E-mail E-mail
Information about disasters and evacuations will be distributed to cell phones within Toyouma City. No pre-registration required.
Distribution of Information: Toyouma City (Evacuation, Other urgent and important information, JMA: Earthquake Early Warning, etc., FDMA: Ballistic Missile Warning, etc.)
Application E-mail address: info@bousai.toyouma.jp
Send a blank E-mail to this address. You will receive an E-mail for registration.

Information about safety confirmation

Disaster Emergency Message Dial 171
How to record messages: Dial 171, Press 1, Enter your phone number including the area code, Record your message.
How to play the messages: Dial 171, Press 2, Enter your phone number including the area code, Play the message for you.
Inquiries about this hazard map: Landslide Alert Areas, Landslide Special Alert Areas, Evacuation.
TEL: 076-443-2221

Mobile phone company's disaster message board
NTT docomo, SoftBank, KDDI (au), Rakuten Mobile.
River Improvement Div., Public Works Construction Dept. Toyouma City, Disaster Prevention and Risk Management Div., Disaster prevention Risk Management Dept. Toyouma City, TEL: 076-443-2120



About the "Landslide Hazard Map"

What is a "Hazard Map"?

A hazard map is a map that shows areas at risk of natural disasters and evacuation locations to help residents evacuate safely during emergencies. Check the hazard map with your family or neighbours to be ready in case of an emergency. **You can check the time it takes to reach evacuation sites on the city's website.** This hazard map focuses on **Landslides**.



QR Code is a registered trademark of DENSO WAVE INCORPORATED

What are Landslides?

It is classified into three types: **Landslip, Mudslide, and Landslide**. If you notice signs of a landslide or its early warnings, please contact city hall.

Landslip
Unstable rocks, Spring water appearing, Slopes steeper than 30 degrees, Rainwater pooling in one area. Landslip is when a steep slope suddenly collapses due to rain, snowmelt, or an earthquake. Because it happens suddenly, many people may not be able to evacuate their homes in time causing serious injuries or loss of life.
Signs of Disaster

- Water from the slope becomes cloudy
- Small stones start falling from the slope
- You hear the sound of tree roots snapping
- Cracks appear in the cliff

Mudslide
Large rocks scattered around, Streams with sudden fast flows, Traces of previous mudslides. Mudslides are when soil and rocks from mountains or rivers mix with water and flow rapidly downhill due to heavy rain. The flow speed varies but can quickly destroy houses and farmland.
Signs of Disaster

- The river water becomes cloudy and driftwood can be seen
- Even though it's still raining, the level of water suddenly drops
- A rumbling sound comes from the mountain
- There is a smell of decaying soil

Landslide
Landslide area. A landslide occurs when rain or snowmelt seeps into the ground, causing slopes to slide intermittently. Because the volume of soil that moves is large, landslides can cause severe damage. Once they start, stopping them completely is very difficult.
Signs of Disaster

- Water bursts out from the slope
- Cracks or steps form in the ground
- Trees fall over
- Water in streams or wells becomes cloudy

About the "Disaster Preparedness"

Mindset and Preparation

Hold a family emergency meeting!
Discuss what to do in times of disaster (such as how to contact each other and how to evacuate).

Know the dangerous spots!
Check for dangerous spots around your home and along evacuation routes in your daily life.

Note signs of disaster
If you notice signs of disaster of landslides, stay away and contact the Toyouma City Hall.

Know how to evacuate!
Run away at right angles to mudslides because they flow too fast.

Watch out for rainfall!
Be careful about disasters when strong rainfall exceeds 20 mm per hour or heavy rainfall exceeds 100 mm from the start of the rainfall.

Help each other!
Let's help residents living alone the elderly and residents with disabilities.

Prepare Emergency Supplies!

Prepare Emergency Supplies to take with you when evacuating in advance.

Clothes
Underwear, Socks, Seasonal clothes, Work gloves, Rain gear, bed sheets, Bandages, etc.

Tools
Portable radio, Flashlight, Paper cups, Plates, Candles, Towels, Soaps, Tissues, Strings, Ropes, Wires, Knife, Taro, Lighters, Newspaper (for Rugs, etc.), Prescription records, Masks, etc.

Medical supplies
First-aid kit (Sling, Gauze, Adhesive plaster, Thermometer, Antiseptic solution, First aid medicine, etc.), Prescription records, Masks, etc.

Emergency food
Bottled water, Canned food, Pre-packaged food, etc.

Valuables
Cash, Bank books, Seal (inkan), Title deed, etc.

Prevention of Infectious Diseases

During a disaster, the risk of infectious disease is higher. Sanitation is especially important in evacuation sites.

Cough etiquette

- If you have a mask, Wear a mask properly.
- If you don't have a mask, Cover your mouth and nose with tissues.
- If you don't have tissues, Cover your mouth and nose with your arms.

Wash your hands

- Wash your hands frequently. If the water does not come out, take an extra amount of alcohol disinfectant in your hand and wipe it off with a paper hand towel.

Toilet

- Wipe the toilet seat before and after use.

Where to evacuate to?

- Evacuation sites designated by Toyouma City
- Relatives' or acquaintances' homes
- Hotels and inns
- Safe place at home

There is a space on the map to write down the evacuation site.

Designated evacuation sites, etc.

About the "Information on Evacuation"

How to obtain Landslide Alert Information

Landslide Alert Information is issued by Toyouma Prefecture and Toyouma Local Meteorological Observatory when Heavy Rain (landslide) Warning is in effect and the possibility of landslides increases. You can check relevant information on the **Toyouma Prefecture Landslide Alert Information Support System**. Please gather information on evacuation as follows.

Heavy Rain (landslide) Warning is in effect
Issued by Toyouma Prefecture and Toyouma Local Meteorological Observatory

Landslide Alert Information is in effect
Issued by Toyouma Prefecture and Toyouma Local Meteorological Observatory

Check risk of landslides in your area from Risk Map of the Toyouma Prefecture Landslide Alert Information Support System. Risk of landslides are in 1 km mesh units. You can see the mesh number on the map.

Risk of landslides

| Alert level | Risk level | Information |
|--------------------------|--------------|--|
| Alert level 4 equivalent | Extreme risk | Landslide Alert Information Level (Actual) |
| Alert level 3 equivalent | High risk | Landslide Alert Information Level (Forecast) |
| Alert level 2 equivalent | Warning | Soil Water Index at Heavy Rain (landslide) Warning Level (Actual or Forecast) |
| Alert level 1 equivalent | Caution | Soil Water Index at Heavy Rain (landslide) Advisory Level (Actual or Forecast) |

Available on the Internet
Toyouma City Website, Toyouma City Mobile QR code, Toyouma City Twitter, Toyouma City Facebook, Toyouma City YouTube, Toyouma City Instagram, Toyouma City LinkedIn, Toyouma City Nextdoor, Toyouma City Reddit, Toyouma City Discord, Toyouma City Twitch, Toyouma City SoundCloud, Toyouma City Dribbble, Toyouma City DeviantArt, Toyouma City 500px, Toyouma City Behance, Toyouma City ArtStation, Toyouma City DeviantArt, Toyouma City 500px, Toyouma City Behance, Toyouma City ArtStation.

Alert level 3 equivalent
It could move on Alert level 4 equivalent (purple or dark purple).

- Note the change in Risk of landslides.
- Prepare to evacuate.

Alert level 4 equivalent (purple or dark purple)
The Evacuation Information Alert Level may be subject to "Evacuation of the Elderly, etc." (Alert Level 3) or "Evacuation Instructions" (Alert Level 4).

- Check evacuation information on the Toyouma City website.
- Not subject to evacuation
- Subject of evacuation
- Start evacuation immediately.

Route of information transmission during a disaster

