

# Introduction

**Please imagine.**  
**The first step is understanding that it could "happen to you".**

Try to picture it. It's been raining all night, and now it's only raining harder. The river you're so used to seeing looks much different from normal. Now it is rough and wider than you've ever seen, and you can see that trees have been uprooted and are being carried by the water. Then finally, the water overwhelms the river banks and spills over them, beginning to flood the surrounding area. You watch as the muddy water rushes toward your town.

What would you do in this situation?

If you want to be able to respond appropriately when faced with danger like this, you need to get ready in advance by understanding the risks and thinking about how you should evacuate if it becomes necessary.

In recent years, heavy rains have caused damage in many places in Japan. You never know when it might happen where you live. Read this brochure and carefully and start thinking about **how to protect yourself and those you love.**

The Jinzu River (near Jinzu-Ohashi Bridge) at the peak of 2004's 23rd typhoon



The same view during normal conditions



Provided by Toyama Office of Rivers and National Highways

Things to remember when evacuating:

- 1. Be responsible for your own safety
- 2. Evacuate early by your own judgment
- 3. Work together (Don't evacuate alone)

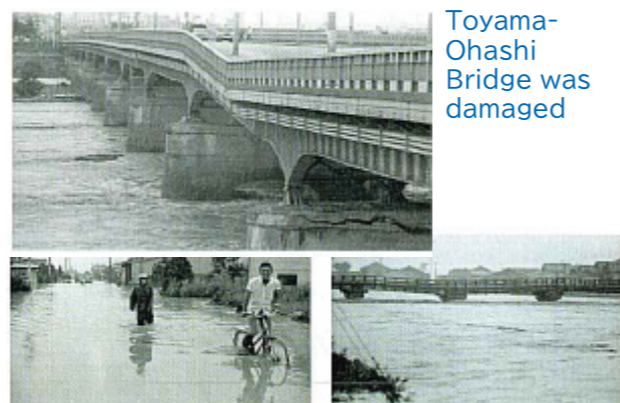
## Record of flood damage in Toyama City

● Heavy rains associated with Typhoon No. 23 in 2004



Flooding in the Shinmei Area

● Heavy rains in July and August in 1969



Toyama-Ohashi Bridge was damaged

Flooding condition in the Mizuhashi Area The flooded Shiraiwa River

Flood damage occurred around where the Jinzu River and the Ida River converge (267 houses were flooded above floor level and 338 houses were flooded below floor level).

Some of the bridge piers of Toyama-Ohashi Bridge were washed away, and the road was closed for 30 days.

Floods of the Joganji River and other waterways caused flooding damage above floor level to 628 houses (mostly in the Mizuhashi area).

Reference: "History of Toyama City" published by History of Toyama City Editing Committee.

# What is your evacuation plan?

**Look at the Flood Hazard Maps inside the pocket of the back cover.**

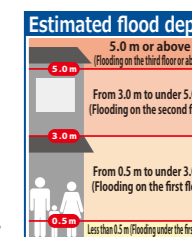


This page explains some important points to help you understand the hazard maps.

Check them and think about what you should do in your situation.

## STEP 1 Is there a risk of flood in the area around your house?

- The detailed area maps show two phases of predicted flood damage. (colored)
- Check the estimated flood depth in the map and make sure you understand how deep the water could become around your home.



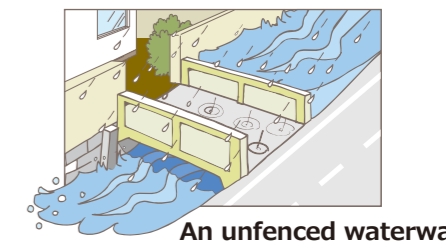
## STEP 2 Where should you evacuate to?

- There are three main options for evacuation.
  - ① Evacuate to a shelter or other evacuation areas shown on the map.
  - ② Evacuate to a safer area or a building nearby
  - ③ Seek safety indoors
- Be prepared to take evacuation actions according to the situation.



## STEP 3 Are there any dangerous places along the evacuation route?

- When evacuating, it may not be possible to fully check the road surface at night or due to flooded roads. Make sure that there are no dangerous places such as an unfenced waterways, uncovered gutters, and steps beforehand.



## STEP 4 Check the information and timing of the evacuation.

- Review the map on occasions of heavy rains, typhoons, or evacuation drills, to be prepared for emergencies.



On the following pages, you will find detailed explanations of relevant information that will lead to more appropriate evacuation actions.