

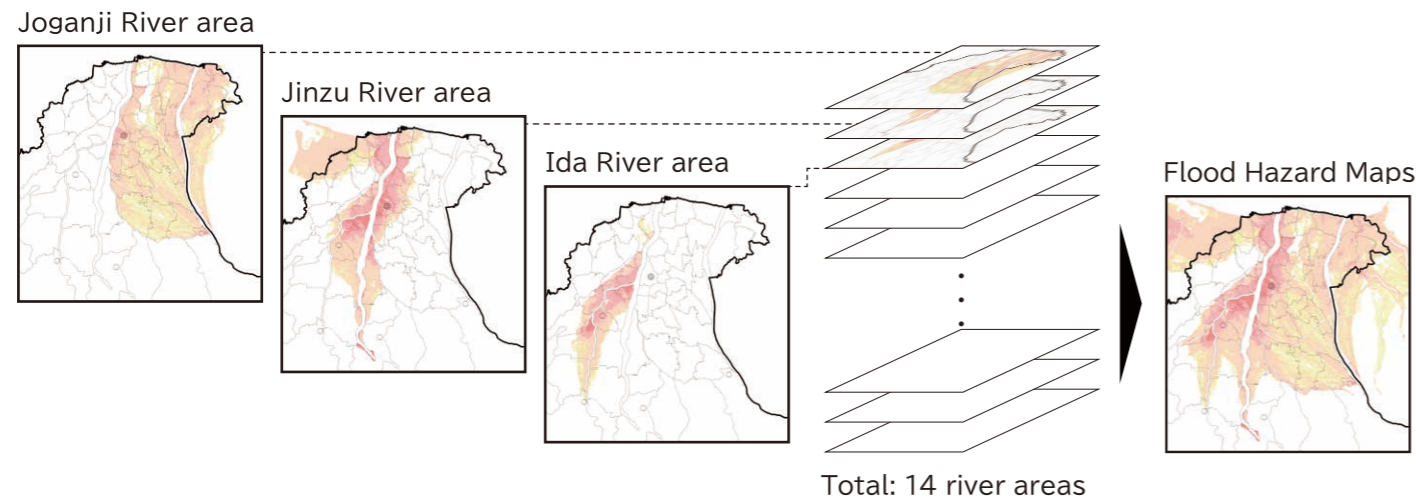
# Do you know the Flood Hazard Maps?

Whenever there is a risk that major rivers will flood, these maps indicate the areas where the flooding is expected to cause damage (Areas likely to be threatened by flooding) and information on evacuation and disaster prevention.

## Estimated flood inundation area

The map shows the classification of the maximum depth of flooding due to river flooding, color-coded by depth.

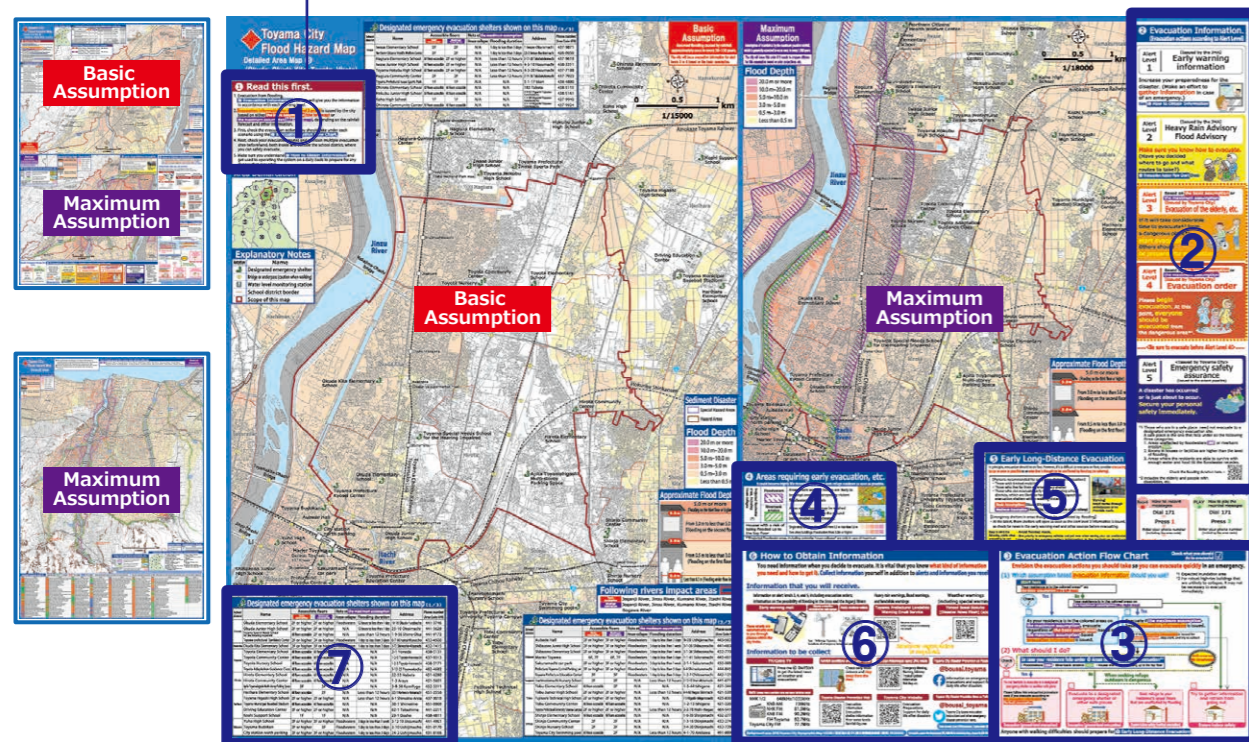
Be aware that uncolored areas may also flood depending on how much it rains.



## Map types

It consists of a "General map" showing the entire area expected to be inundated by flooding and a "Detailed map of the area" for confirming evacuation routes. The detailed map of the area shows two types of expected flooding: **the basic assumption** and **the maximum assumption**.

For more details about the impact for each river, see the section for River Maps on the Toyama City website.



\*There are two types of detailed area maps: vertical and horizontal, depending on the district.

## Explanation of each item on the Flood Hazard Map

### ① Read this first.

This section contains instructions for using the map.

### ② Evacuation information (the five alert levels and their evacuation actions)

This section shows such information as announcements or orders based on the alert level and indicates the actions to be taken for each level.

### ③ Evacuation Action Flow Chart

In order to evacuate quickly in an emergency, it is important to know in advance **what evacuation action to take based on flood damage estimates when an evacuation notice is issued.**

### ④ Areas that require early evacuation

If you live in one of these areas, there is an **especially high risk that your life will be endangered** by flooding, so be sure to **quickly evacuate outdoors** if any evacuation instructions are issued.

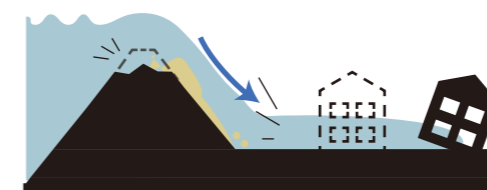
● **Assumed flood area for possible house collapse, etc. (Two areas, "floodwaters" and "riverbank erosion," are shown for the maximum assumption only.)**

○ Floodwaters

Wooden houses\* are likely to be swept away or destroyed by violent floodwaters from rivers.



Map legend



○ Riverbank erosion

Flooding may cause houses to be washed away or collapse.



Map legend



\*In some cases, it may not be necessary to immediately evacuate the building if it is a sturdy high-rise building that is unlikely to collapse.

### ● Residences that may be inundated to the top floor

As a general estimate, buildings may be inundated to the top floor by 0.5 meter of floodwater for one-story buildings, 3 meters of water for two-story buildings, and 5 meters of water for three-story buildings.

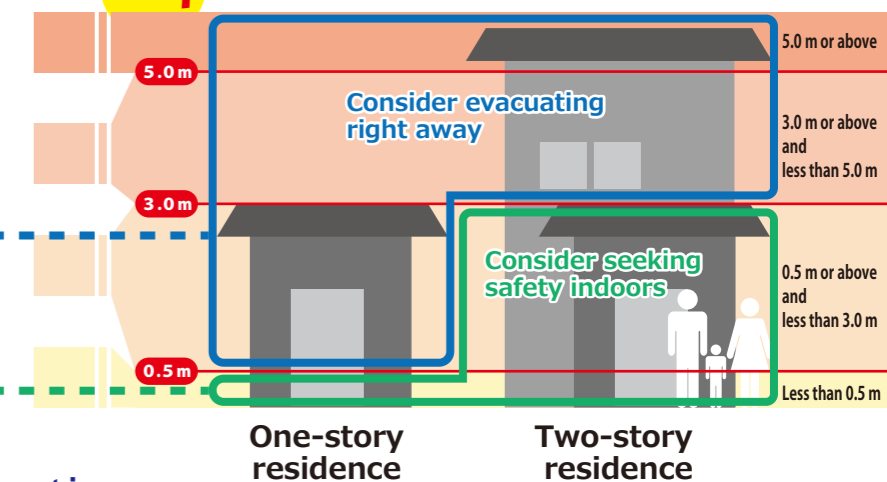
**Evacuate to outdoors quickly.**

Single-story:  
0.5 m or more  
Two-story:  
3.0 m or more

**Depending on the situation, consider staying indoors for safety.**

Single-story:  
less than 0.5 m  
Two-story:  
less than 3.0 m

**STEP 1** Check the map based on the shades below.



### ⑤ Early long-distance evacuation

This is a request to start evacuation as early as possible for people with disabilities, people who live far from evacuation shelters, and people in school districts where evacuation shelters are not expected to have sufficient capacity.

When evacuating by car, which is one of the evacuation methods for those who cannot evacuate on foot, it is important to understand the risks involved, start evacuation as early as possible, and evacuate to a safe place where flooding is not expected. (Continues on page 8)

⑥ and ⑦ are on the next page.