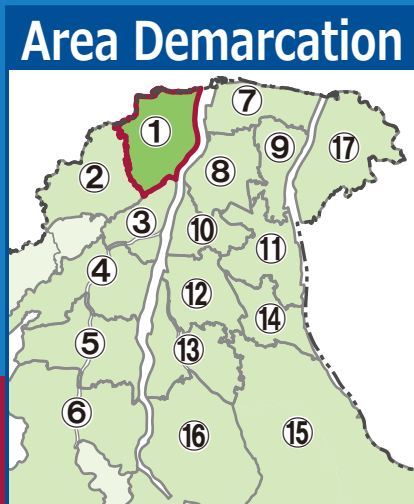


# Toyama City Flood Hazard Map

Detailed Area Map ①  
(Yokata, Kusajima, Kuragaki,  
Hachiman, Nagaoka)

## ① Read this first.

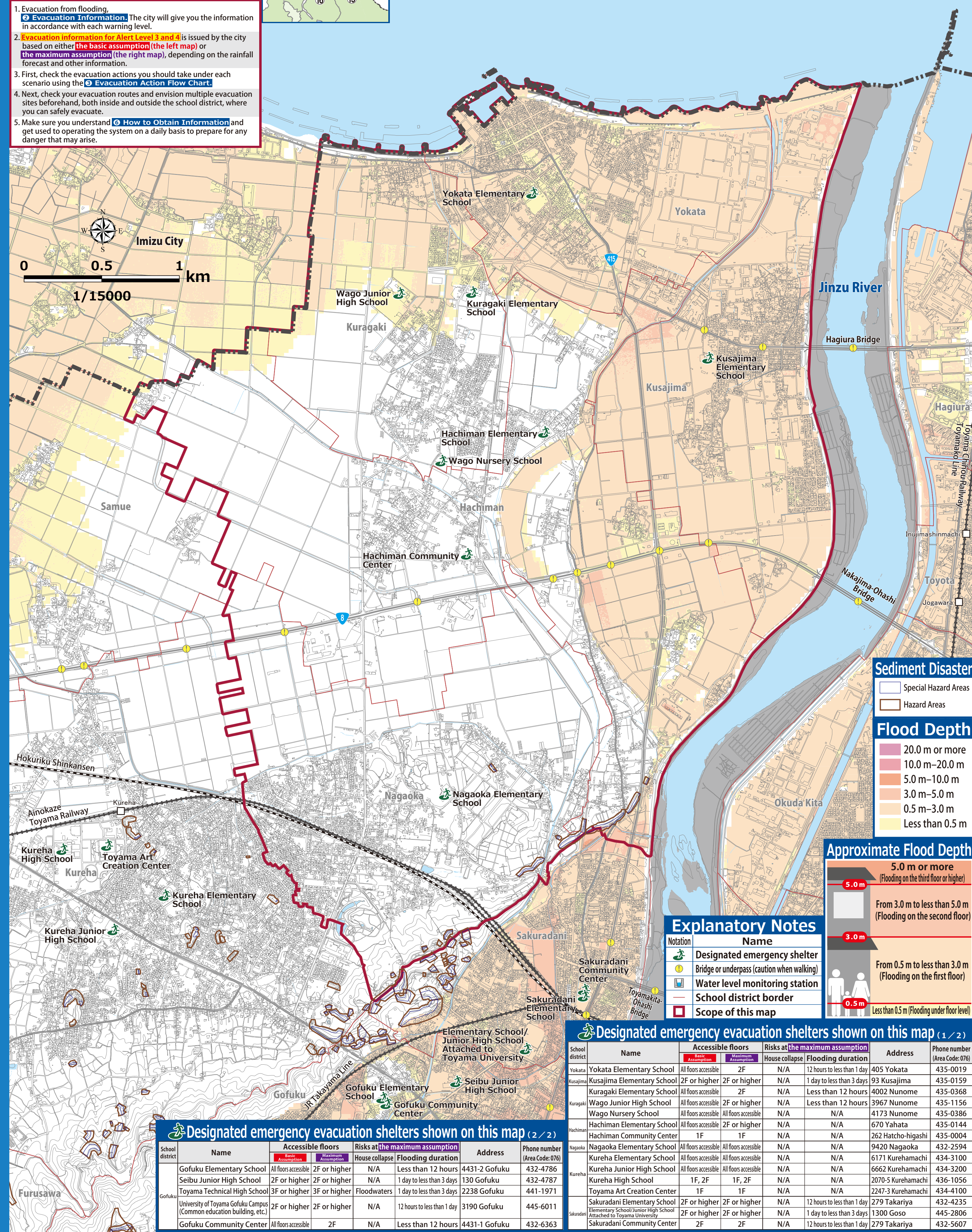
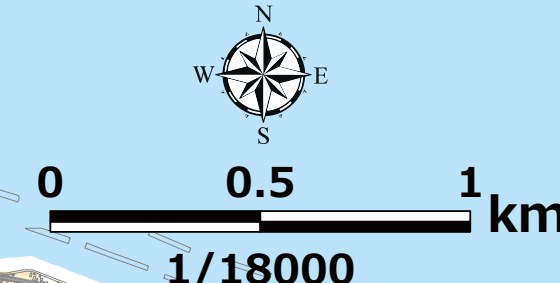
- Evacuation from flooding.  
② **Evacuation Information.** The city will give you the information in accordance with each warning level.
- Evacuation information for Alert Level 3 and 4** is issued by the city based on either **the basic assumption** (the left map) or **the maximum assumption** (the right map), depending on the rainfall forecast and other information.
- First, check the evacuation actions you should take under each scenario using the ③ **Evacuation Action Flow Chart**.
- Next, check your evacuation routes and envision multiple evacuation sites beforehand, both inside and outside the school district, where you can safely evacuate.
- Make sure you understand ④ **How to Obtain Information** and get used to operating the system on a daily basis to prepare for any danger that may arise.



**Following rivers impact areas**  
Jinzu River, Ida River  
Shogawa River, Jinzu River, Ida River,  
Yamada River

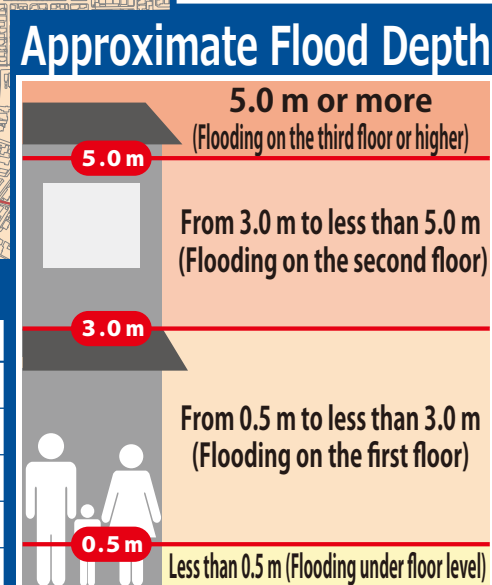
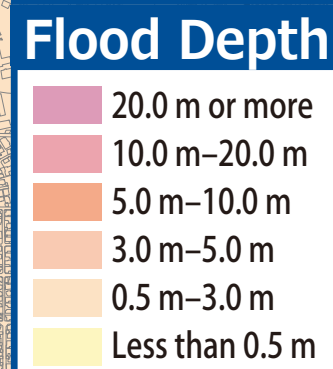
**Basic Assumption**  
Assumed flooding caused by rainfall approximately once in every 30-150 years.  
The city will issue evacuation information for alert levels 3 or 4 based on the basic assumption.

**Maximum Assumption**  
Assumption of inundation by the maximum possible rainfall, which is generally expected to occur once in every 1,000 years.  
The city will issue this order if it needs to prepare citizens for this assumption based on prior projections, etc.



### Sediment Disaster

- Special Hazard Areas
- Hazard Areas



### Explanatory Notes

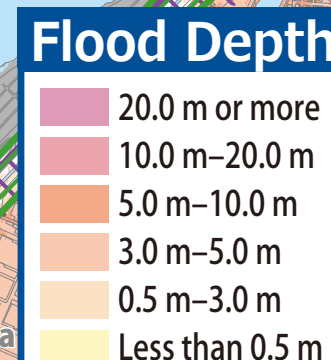
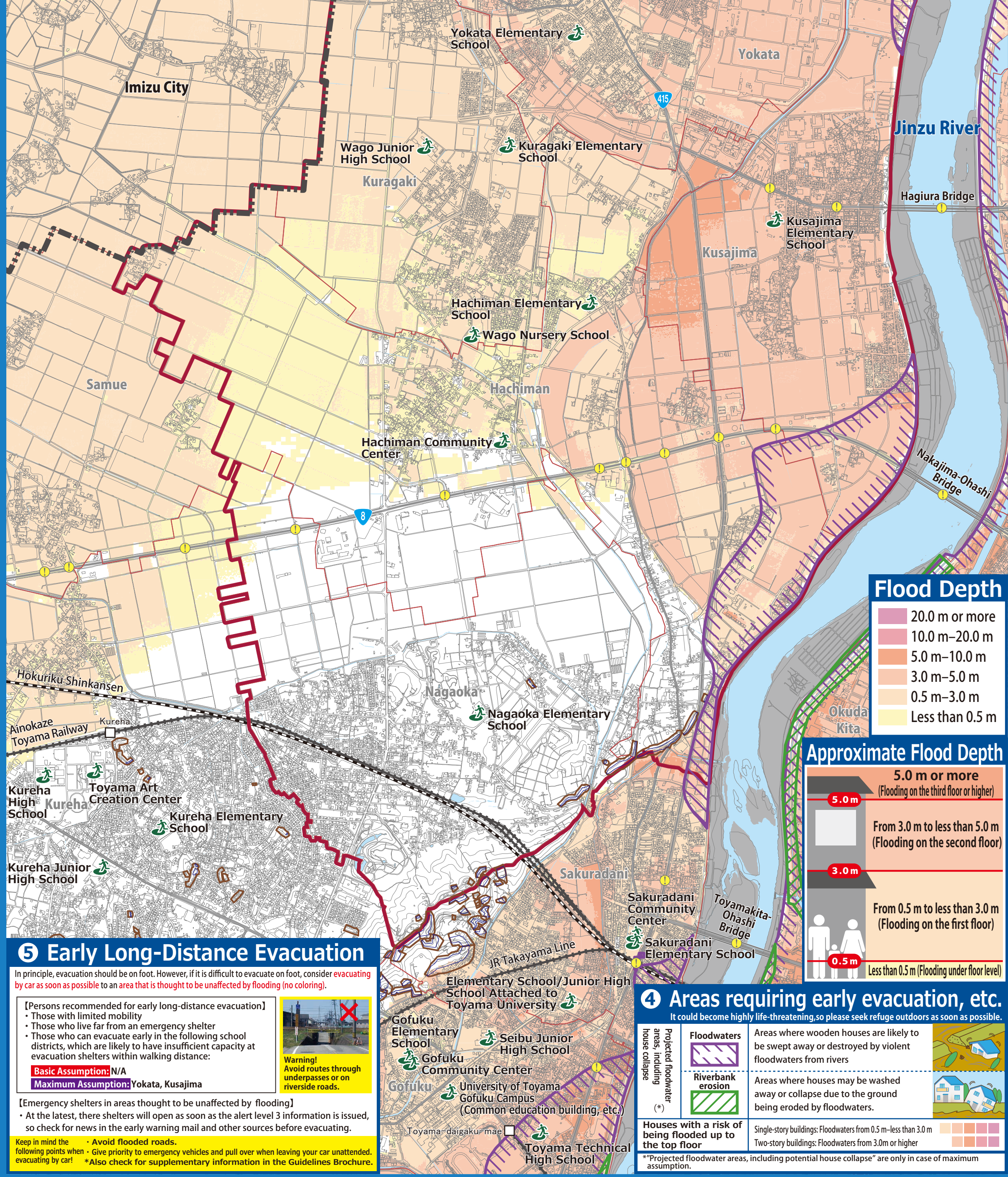
Notation	Name
	Designated emergency shelter
	Bridge or underpass (caution when walking)
	Water level monitoring station
	School district border
	Scope of this map

### Designated emergency evacuation shelters shown on this map (1/2)

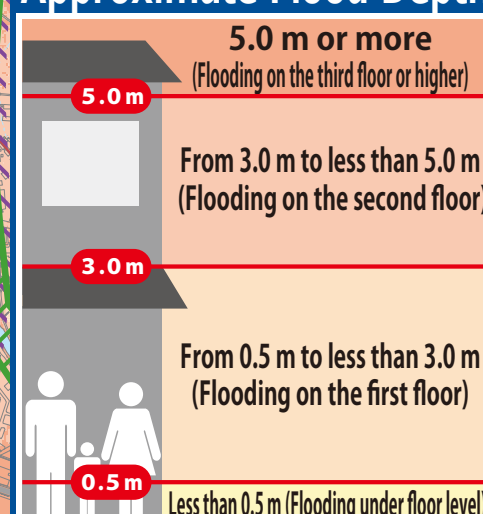
School district	Name	Accessible floors		Risks at the maximum assumption		Address	Phone number (Area Code: 076)
		Basic Assumption	Maximum Assumption	House collapse	Flooding duration		
Yokata	Yokata Elementary School	All floors accessible	2F	N/A	12 hours or less than 1 day	405 Yokata	435-0019
Kusajima	Kusajima Elementary School	2F or higher	2F or higher	N/A	1 day to less than 3 days	93 Kusajima	435-0159
Kuragaki	Kuragaki Elementary School	All floors accessible	2F	N/A	Less than 12 hours	4002 Nunome	435-0368
	Wago Junior High School	All floors accessible	2F or higher	N/A	Less than 12 hours	3967 Nunome	435-1156
	Wago Nursery School	All floors accessible	All floors accessible	N/A	N/A	4173 Nunome	435-0386
Hachiman	Hachiman Elementary School	All floors accessible	2F or higher	N/A	N/A	670 Yahata	435-0144
	Hachiman Community Center	1F	1F	N/A	N/A	262 Hato-higashi	435-0004
Nagaoka	Nagaoka Elementary School	All floors accessible	All floors accessible	N/A	N/A	9420 Nagaoka	432-2594
	Kureha Elementary School	All floors accessible	All floors accessible	N/A	N/A	6171 Kurehamachi	434-3100
	Kureha Junior High School	All floors accessible	All floors accessible	N/A	N/A	6662 Kurehamachi	434-3200
	Toyama Art Creation Center	1F, 2F	1F, 2F	N/A	N/A	2070-5 Kurehamachi	436-1056
	Sakuradani Elementary School	2F or higher	2F or higher	N/A	12 hours or less than 1 day	2247-3 Kurehamachi	434-4100
	Sakuradani Community Center	2F or higher	2F or higher	N/A	1 day to less than 3 days	1300 Goso	445-2806
	Sakuradani Elementary School	2F or higher	2F or higher	N/A	12 hours or less than 1 day	279 Takariya	432-4235
	Sakuradani Community Center	2F	2F	N/A	12 hours or less than 1 day	279 Takariya	432-5607

### Designated emergency evacuation shelters shown on this map (2/2)

School district	Name	Accessible floors		Risks at the maximum assumption		Address	Phone number (Area Code: 076)
		Basic Assumption	Maximum Assumption	House collapse	Flooding duration		
Gofuku	Gofuku Elementary School	All floors accessible	2F or higher	N/A	Less than 12 hours	4431-2 Gofuku	432-4786
	Seibu Junior High School	2F or higher	2F or higher	N/A	1 day to less than 3 days	130 Gofuku	432-4787
	Toyama Technical High School	2F or higher	2F or higher	N/A	1 day to less than 3 days	2238 Gofuku	441-1971
	University of Toyama Gofuku Campus (Common education building, etc.)	2F or higher	2F or higher	N/A	12 hours or less than 1 day	3190 Gofuku	445-6011
	Gofuku Community Center	All floors accessible	2F	N/A	Less than 12 hours	4431-1 Gofuku	432-6363



### Approximate Flood Depth



### ④ Areas requiring early evacuation, etc.

- It could become highly life-threatening so please seek refuge outdoors as soon as possible.
- Floodwaters**: Areas where wooden houses are likely to be swept away or destroyed by violent floodwaters from rivers.
  - Riverbank erosion**: Areas where houses may be washed away or collapse due to the ground being eroded by floodwaters.
  - Houses with a risk of being flooded up to the top floor**: Single-story buildings: Floodwaters from 0.5 m - less than 3.0 m. Two-story buildings: Floodwaters from 3.0 m or higher.
- \*Projected floodwater areas, including potential house collapse\* are only in case of maximum assumption.

## ⑤ Early Long-Distance Evacuation

In principle, evacuation should be on foot. However, if it is difficult to evacuate on foot, consider evacuating by car as soon as possible to an area that is thought to be unaffected by flooding (no coloring).

- [Persons recommended for early long-distance evacuation]
  - Those with limited mobility
  - Those who live far from an emergency shelter
  - Those who can evacuate early in the following school districts, which are likely to have insufficient capacity at evacuation shelters within walking distance:

**Basic Assumption:** N/A  
**Maximum Assumption:** Yokata, Kusajima

[Emergency shelters in areas thought to be unaffected by flooding]  
At the latest, there shelters will open as soon as the alert level 3 information is issued, so check for news in the early warning mail and other sources before evacuating.

Keep in mind the following points when:  
- Avoid flooded roads.  
- Give priority to emergency vehicles and pull over when leaving your car unattended, evacuating by car.  
- Also check for supplementary information in the Guidelines Brochure.

Warning! Avoid routes through underpasses or on overpass roads.

Information that you will receive.

Information on alert levels 3, 4, and 5, including evacuation orders; information on the possibility of flooding in the Jinzu and the Jogani Rivers

Early warning mail  
Disaster prevention administrative radio system  
Public relations vehicle

Heavy rain warnings, flood warnings, and landslide warnings  
Toyama Prefectural Landslide Warning Email Service

Weather warnings (including special warnings)  
Yahoo! Bosai Sokoku (Disaster News Flash) (app)

Information to be collect

TV/Cable TV  
Press the @ button to get the latest news on weather and evacuations!

Radio Always have a portable radio and open batteries ready!

NHK 1/2 648kHz/103.5kHz  
NHK AM 738kHz  
NHK FM 81.5MHz  
NHK FM 90.2MHz  
FM Toyama 82.7MHz  
Toyama City FM 77.7MHz

Rainfall conditions around your house  
Check only from indoors and stay away from the river.

The Japan Meteorological Agency (JMA) website  
Emergency Warning, Warning, Advisory Tropical Cyclone Information Risk Map etc.

Toyama Disaster Prevention Web  
Evacuation information  
Evacuation shelter information  
River water levels  
Rainfall figures

Toyama City Website  
Evacuation Preparations Support for daily life after disasters

Toyama City Disaster Prevention News on Twitter  
@bousai\_toyama  
Toyama City issues evacuation instructions and other emergency disaster prevention news.

Background map: 2018 Toyama City Topographic Map 1/2500 / 測量法に基づく国土地理院長承認 (使用) R1Jh942  
For inquiries, contact: River Improvement D/C, Public Works/Construction Dept., Toyama City 076-445-2211

## ② Evacuation Information.

(Evacuation actions according to Alert Level)

Alert Level 1  
[Issued by the JMA]  
**Early warning information**

Increase your preparedness for the disaster. (Make an effort to gather information in case of an emergency.)  
See ③ How to Obtain Information

Alert Level 2  
[Issued by the JMA]  
**Heavy Rain Advisory Flood Advisory**

Make sure you know how to evacuate. (Have you decided where to go and what routes to take?)  
③ Evacuation Action Flow Chart Check

Alert Level 3  
Based on the basic assumption or maximum assumption (Issued by Toyama City)  
**Evacuation of the elderly, etc.**

If it will take considerable time to evacuate\*2 from a dangerous place\*1, start evacuation. Others should be prepared for evacuation.

Alert Level 4  
Based on the basic assumption or maximum assumption (Issued by Toyama City)  
**Evacuation order**

Please begin evacuation. At this point, everyone should be evacuated from the dangerous area\*1.

Alert Level 5  
[Issued by Toyama City]  
**Emergency safety assurance**  
(Issued to the extent possible)

A disaster has occurred or is just about to occur. Secure your personal safety immediately.

\*1 Those who are in a safe place need not evacuate to a designated emergency evacuation site. A safe place is the one that falls under all the following three categories.  
1. Areas unaffected by floodwaters or riverbank erosion  
2. Rooms in houses or facilities are higher than the level of flooding.  
3. Areas where the residents are able to survive with enough water and food till the floodwater recedes.

\*2 Includes the elderly and people with disabilities, etc.

Disaster Emergency Message Dial (171)

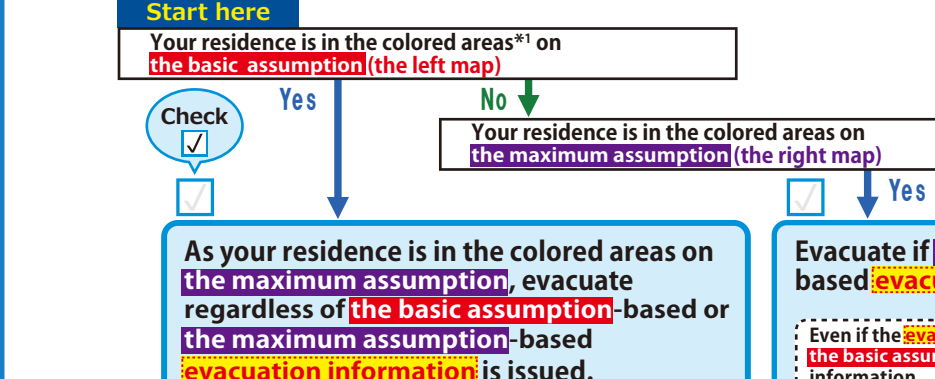
Record How to record messages  
Dial 171 Press 1  
Enter your phone number (including the area code)  
Record your message

PLAY How to play the recorded messages  
Dial 171 Press 2  
Enter your phone number (including the area code)  
Play the message for you

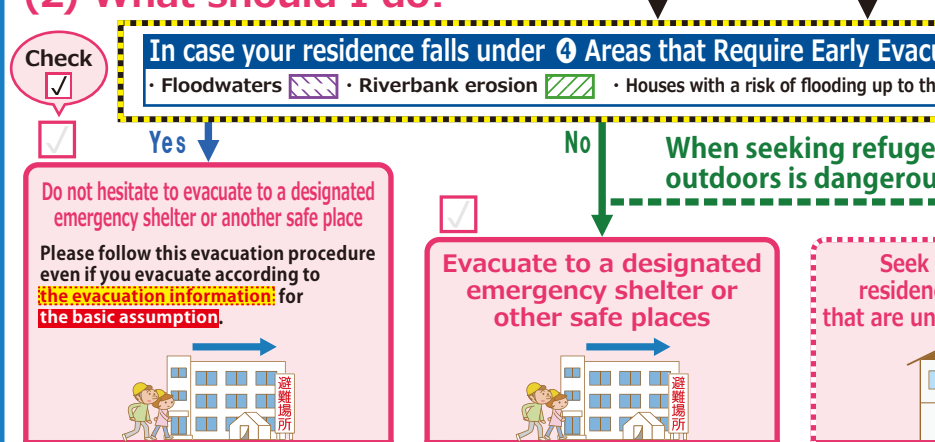
## ③ Evacuation Action Flow Chart

Envision the evacuation actions you should take so you can evacuate quickly in an emergency.

### (1) Which assumption based evacuation information should you use?



### (2) What should I do?



Anyone with walking difficulties should prepare for ⑤ Early Long-Distance Evacuation.