



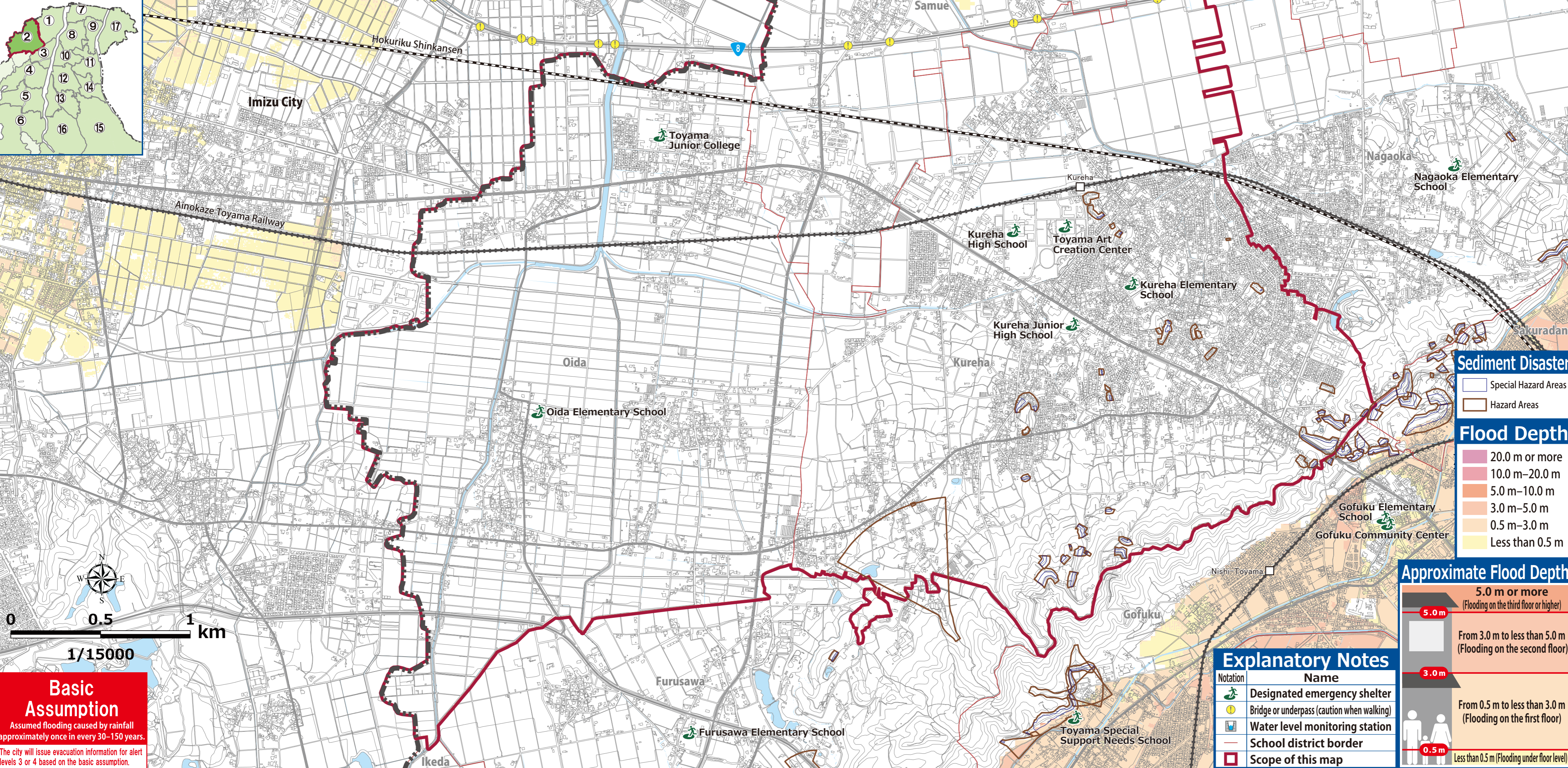
### Detailed Area Map ② (Kureha, Samue, Oida)

1. Evacuation from flooding.  
**Q Evaluation Information.** The city will give you the information in accordance with each warning level.
2. **Evaluation information for Alert Level 3 and 4** is issued by the city based on either **the basic assumption (the top map)** or **the maximum assumption (the bottom map)**, depending on the rainfall forecast and other information.
3. First, check the evacuation actions you should take under each scenario using the **Q Evacuation Action Flow Sheet**.
4. Next, check the evacuation routes and environment multiple evacuation routes are being used inside and outside the school district, where you can safely evacuate.
5. Make sure you understand **Q How to Obtain Information** and get used to operating the system on a daily basis to prepare for any danger that may arise.

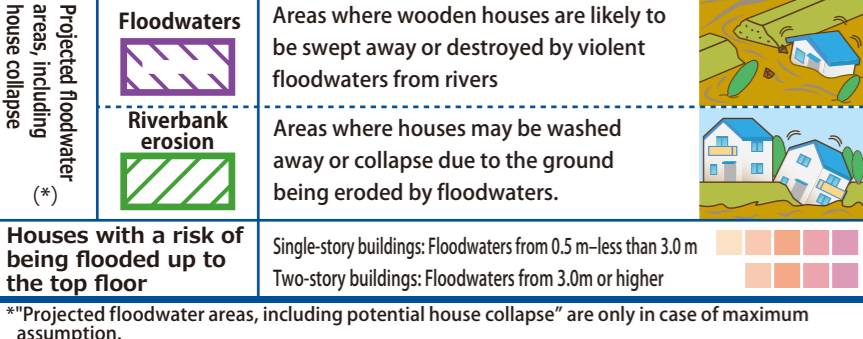
A map of the Republic of Serbia divided into 17 numbered regions. Region 2, in the northwest, is highlighted in red. The regions are numbered 1 through 17.

Designated emergency evacuation shelters shown on this map						
School district	Name	Accessible floors		Risks at the maximum assumption		Address
		Below grade	Grade level	Room collapse	Flooding duration	
Kureha	Kureha Elementary School	All floors accessible	All floors accessible	N/A	N/A	6171 Kurehamachi
	Kureha Junior High School	All floors accessible	All floors accessible	N/A	N/A	6662 Kurehamachi
	Kureha High School	1F, 2F	1F, 1F	N/A	N/A	2078 Kurehamachi
	Toyama Art Creation Center	1F	1F	N/A	N/A	2247-3 Kurehamachi
Samue	Samue Elementary School	All floors accessible	2F or higher	N/A	1 day to less than 3 days	427 Honcho-Chubu
	Samue Community Center	2F	2F	N/A	1 day to less than 3 days	263 Honcho-Chubu
	Oida Elementary School	All floors accessible	All floors accessible	N/A	N/A	317 Naka-Oida
	Toyama Junior College	2F	2F	N/A	1 day to less than 3 days	444 Gankajiki
Koganei	Goku Nursery School	All floors accessible	All floors accessible	N/A	N/A	4173 Nunome
Hachimachi	Hachimachi Elementary School	All floors accessible	2F or higher	N/A	N/A	760 Yahata
	Hachimachi Community Center	1F, 1F	1F	N/A	N/A	262 Hatohata-higashi
Nagaoka	Nagaoka Elementary School	All floors accessible	All floors accessible	N/A	N/A	9420 Nagaoka
Gofuku	Gofuku Elementary School	All floors accessible	2F or higher	N/A	Less than 12 hours	4431-2 Gofuku
	Seibu Junior High School	2F or higher	2F or higher	N/A	1 day to less than 3 days	130 Gofuku
	Toyama Special Support Needs School	2F	2F	N/A	12 hours to less than 1 day	4982 Kanaya
	Gofuku Community Center	All floors accessible	2F	N/A	Less than 12 hours	4311 Gofuku
Furusawa	Furusawa Elementary School	All floors accessible	All floors accessible	N/A	N/A	501 Furusawa

Basic Assumption	Jinzu River
Maximum Assumption	Shogawa River, Jinzu River



tion of inundation by the maximum possible rainfall  
generally expected to occur once in every 1,000 years.  
The city will issue this order if it needs to prepare citizens  
on the assumption based on prior projections, etc.



 20.0 m or more  
 10.0 m–20.0 m  
 5.0 m–10.0 m  
 3.0 m–5.0 m  
 0.5 m–3.0 m  
 Less than 0.5 m

**5.0 m or more**  
(Flooding on the third floor or higher)

**5.0 m**

**From 3.0 m to less than 5.0 m**  
(Flooding on the second floor)

**3.0 m**

**From 0.5 m to less than 3.0 m**  
(Flooding on the first floor)

**0.5 m**

**less than 0.5 m** (Flooding under floor level)

**How to record messages**

Dial 171

Press 1

Enter your phone number  
(including the area code)

**Record** your message

**How to play the recorded messages**

Dial 171

Press 2

Enter your phone number  
(including the area code)

**Play** the message for you

**Early warning information**

Increase your preparedness for the disaster. (Make an effort to **gather information** in case of an emergency.)

**See**

**6 How to Obtain Information**

(Issued by the JMA)  
 Heavy Rain Advisory  
 Flood Advisory  
 Make sure you know  
 how to evacuate.  
 Have you decided where  
 to go and what  
 supplies to take?  
 Evacuation  
 Action Flow Chart

**Level 3** (Issued by Toyama City)  
**Evacuation of the elderly, etc.**

If it will take considerable time to evacuate\*<sup>2</sup> from a dangerous place\*<sup>1</sup>, **start evacuation**. Others should **be prepared for evacuation**.



**Level 4** (Issued by Toyama City)  
**Evacuation order**

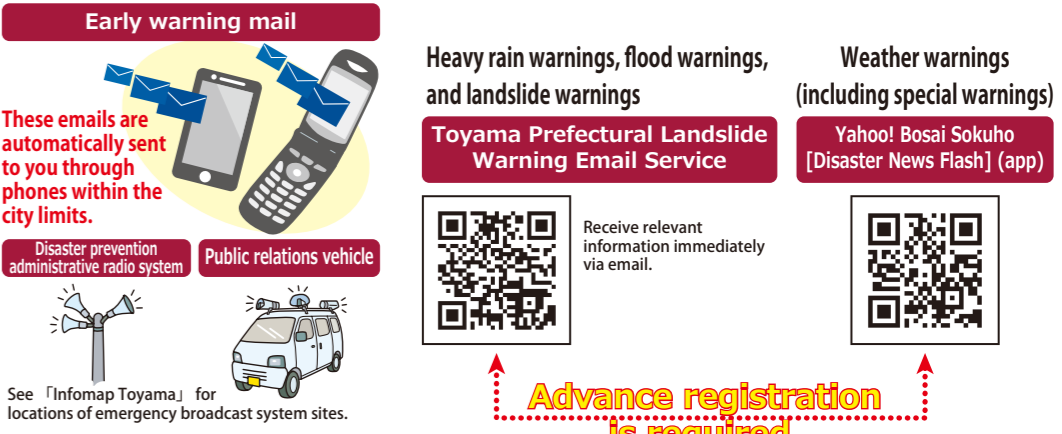
Please **begin** **evacuation**. At this point, everyone should be **evacuated** from the dangerous area\*1.

An illustration showing three people—two adults and a child—wearing raincoats and walking away from a red hatched area that represents a dangerous zone. The adults are wearing blue and yellow raincoats, while the child is in a pink one. They are all giving thumbs up. The red hatched area is on the left, and the safe area is on the right.

Issued by Toyama City  
Emergency safety  
assurance  
(Issued to the extent possible)  
A disaster has occurred  
just about to occur  
Secure your  
personal safety  
immediately.

**You need information when you decide to evacuate. It is vital that you know **what kind of information you need and how to get it.** Collect **information** yourself in addition to **alerts and information you receive.****

Information on alert levels 3, 4, and 5, including evacuation orders;  
information on the possibility of flooding in the Jinzu and the Joganii Rivers





**TV/Cable TV**

Press the **@ button** to get the latest news on weather and evacuations!



**Rainfall conditions around your house**

Check only from indoors and **stay away from the river.**



**Tsunami Disaster Prevention Web**



Evacuation information  
Evacuation shelter information  
River water levels  
River figures

**Radio** Always have a portable radio and spare batteries ready!

NHK 1/2	648kHz/1035kHz
 KNB AM	738kHz
KNB FM	81.5MHz
KNB FM	90.2MHz
FM Toyama	82.7MHz
Toyama City FM	77.7MHz

**Toyama City Disaster Prevention on Facebook**

**@bousai.toyama**

 Information on emergency evacuations and support for daily life after disasters

**Toyama City Disaster Prevention News on Twitter**

**@bousai.toyama**

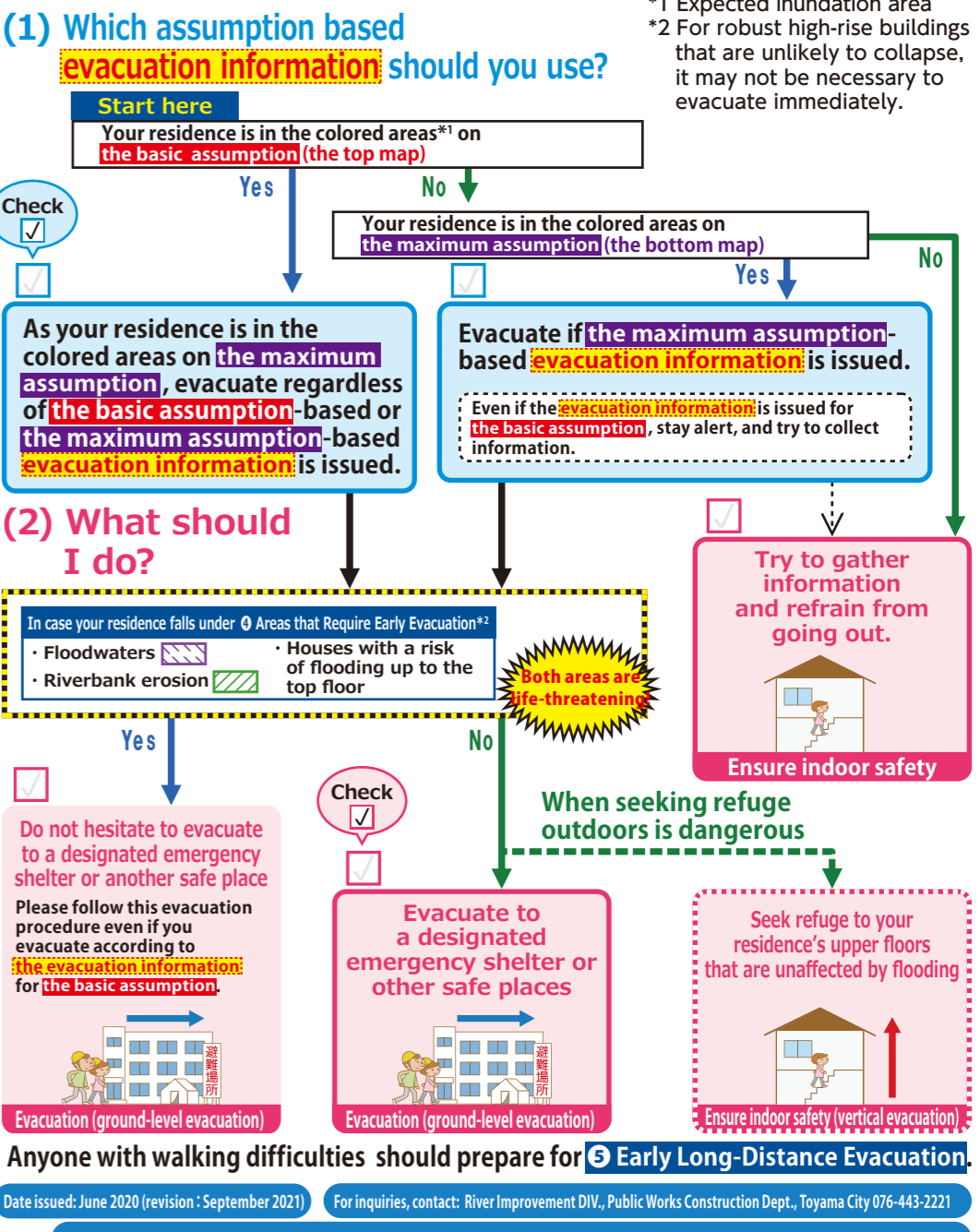
 Toyama City issues evacuation instructions and other emergency disaster prevention news.

**Toyama City Website**



Evacuation Preparations  
Support for daily life after disasters

**Envision the evacuation actions you should take so you can evacuate quickly in an emergency.**



**How to record messages**

Dial 171

Press 1

Enter your phone number  
(including the area code)

**Record** your message

**How to play the recorded messages**

Dial 171

Press 2

Enter your phone number  
(including the area code)

**Play** the message for you