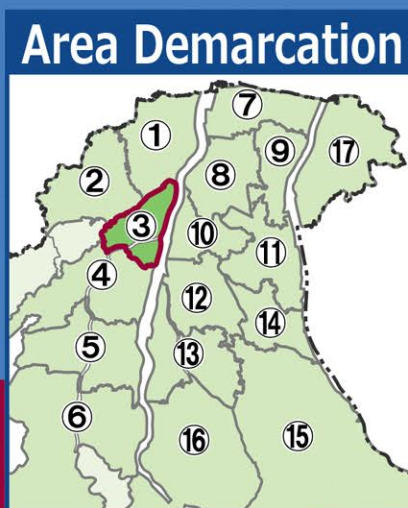


Toyama City Flood Hazard Map

Detailed Area Map (Sakuradani, Gofuku, Shinmei)



Designated emergency evacuation shelters shown on this map (3/3)

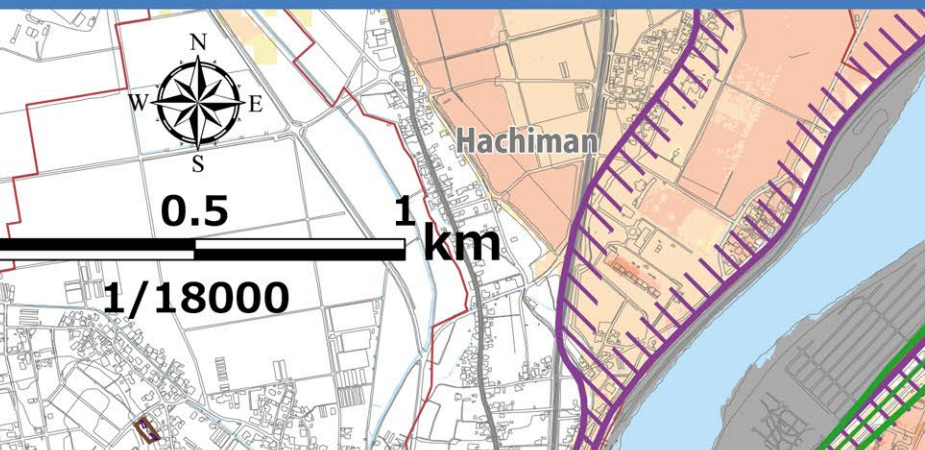
School district	Name	Accessible floors	Risks at the maximum assumption	Address	Phone number (Area Code: 076)
		Minimum	Maximum		
Okuda	Toyama Prefectural Kyosei Center	2F or higher	2F or higher	6-7 Minatoirifuneco	432-4500
	Yuhō High School	2F or higher	3F or higher	2-12-10 Jinzumachi	441-4193
	Toyama Budokan	2F or higher	3F	2-10 Ushijimacho	431-0170
	City station north parking	2F or higher	3F or higher	24-2 Ushijimacho	431-8166
	Aubade Hall	2F or higher	3F or higher	9-28 Ushijimacho	445-5620
Okuda	Shibazono Junior High School	2F or higher	3F or higher	3-1-26 Shibazonocho	441-4638
	Shibazono Elementary School	2F or higher	3F or higher	3-1-26 Shibazonocho	432-7700
	Toyama Chubu High School	2F or higher	3F or higher	3-1-26 Shibazonocho	441-3541
	Sakuramachi car park	2F or higher	3F or higher	2-1-1 Sakuramachi	433-0004
	Toyama Prefectural Hall	2F or higher	3F or higher	4-18 Shinsogawa	432-3111
Nambu	Nambu Junior High School	2F or higher	2F or higher	2-10-10 Nishi-Denjigatamachi	424-3617

Basic Assumption
Assumed flooding caused by rainfall approximately once in every 30-150 years.
The city will issue evacuation information for alert levels 3 or 4 based on the basic assumption.

Maximum Assumption
Assumption of inundation by the maximum possible rainfall, which is generally expected to occur once in every 1,000 years.
The city will issue this order if it needs to prepare citizens for this assumption based on prior projections, etc.

4 Areas requiring early evacuation, etc.
It could become highly life-threatening, so please seek refuge outdoors as soon as possible.

- Floodwaters:** Areas where wooden houses are likely to be swept away or destroyed by violent floodwaters from rivers.
- Riverbank erosion:** Areas where houses may be washed away or collapse due to the ground being eroded by floodwaters.
- Houses with a risk of being flooded up to the top floor:** Single-story buildings: Floodwaters from 0.5 m less than 3.0 m. Two-story buildings: Floodwaters from 3.0m or higher.



2 Evacuation Information. (Evacuation actions according to Alert Level)

Alert Level 1 [Issued by the JMA] **Early warning information**

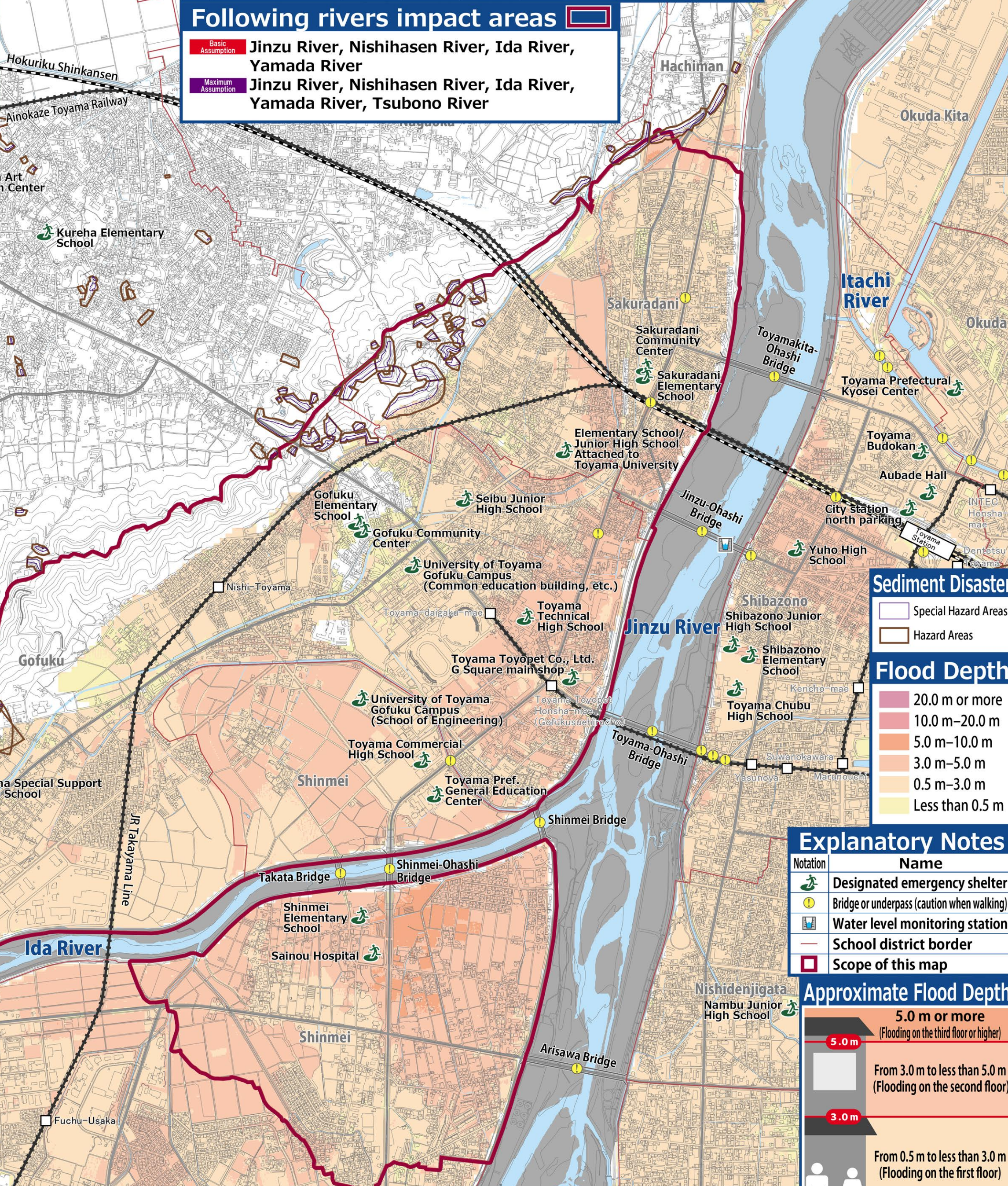
Increase your preparedness for the disaster. (Make an effort to gather information in case of an emergency.)
See How to Obtain Information

- 1 Read this first.**
- Evacuation from flooding.
 - Evacuation Information for Alert Level 1 and 2 is issued by the city based on either the basic assumption (the left map) or the maximum assumption (the right map), depending on the rainfall forecast and other information.
 - First, check the evacuation actions you should take under each scenario using the Evacuation Action Flow Chart.
 - Next, check your evacuation routes and envision multiple evacuation sites beforehand, both inside and outside the school district, where you can safely evacuate.
 - Make sure you understand How to Obtain Information and get used to operating the system on a daily basis to prepare for any danger that may arise.

Following rivers impact areas

Basic Assumption: Jinzu River, Nishihasen River, Ida River, Yamada River

Maximum Assumption: Jinzu River, Nishihasen River, Ida River, Yamada River, Tsubono River



Sediment Disaster

- Special Hazard Areas
- Hazard Areas

Flood Depth

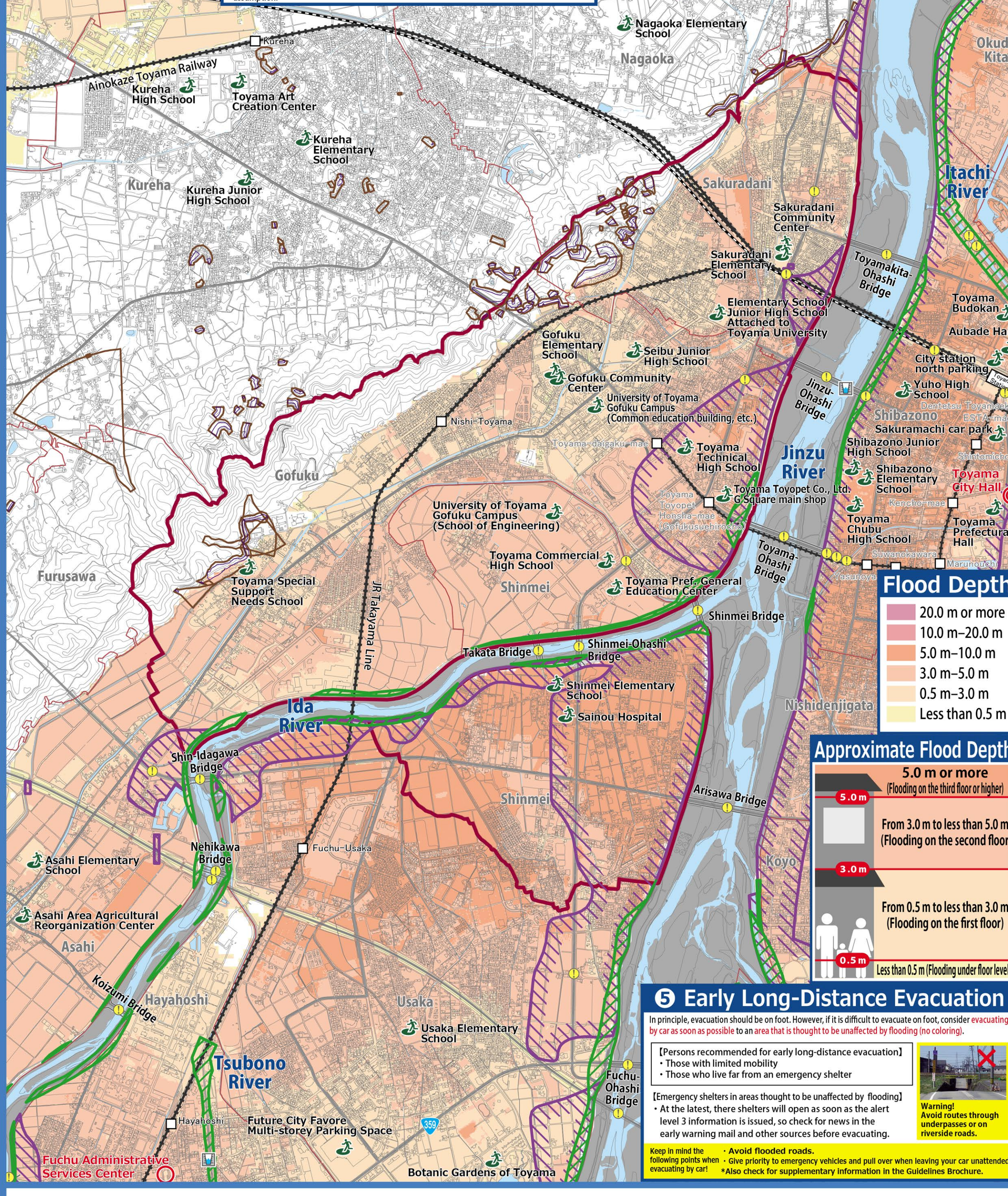
- 20.0 m or more
- 10.0 m-20.0 m
- 5.0 m-10.0 m
- 3.0 m-5.0 m
- 0.5 m-3.0 m
- Less than 0.5 m

Explanatory Notes

- Designated emergency shelter
- Bridge or underpass (caution when walking)
- Water level monitoring station
- School district border
- Scope of this map

Approximate Flood Depth

- 5.0 m or more (Flooding on the third floor or higher)
- From 3.0 m to less than 5.0 m (Flooding on the second floor)
- From 0.5 m to less than 3.0 m (Flooding on the first floor)
- Less than 0.5 m (Flooding under floor level)



Flood Depth

- 20.0 m or more
- 10.0 m-20.0 m
- 5.0 m-10.0 m
- 3.0 m-5.0 m
- 0.5 m-3.0 m
- Less than 0.5 m

Approximate Flood Depth

- 5.0 m or more (Flooding on the third floor or higher)
- From 3.0 m to less than 5.0 m (Flooding on the second floor)
- From 0.5 m to less than 3.0 m (Flooding on the first floor)
- Less than 0.5 m (Flooding under floor level)

5 Early Long-Distance Evacuation

In principle, evacuation should be on foot. However, if it is difficult to evacuate on foot, consider evacuating by car as soon as possible to an area that is thought to be unaffected by flooding (no coloring).

- Persons recommended for early long-distance evacuation:
 - Those with limited mobility
 - Those who live far from an emergency shelter

[Emergency shelters in areas thought to be unaffected by flooding] - At the latest, these shelters will open as soon as the alert level 3 information is issued, so check for news in the early warning mail and other sources before evacuating.

Keep in mind the following points when evacuating by car:

- Avoid flooded roads.
- Give priority to emergency vehicles and pull over when leaving your car unattended.
- Also check for supplementary information in the Guidelines Brochure.

Alert Level 2 [Issued by the JMA] **Heavy Rain Advisory Flood Advisory**

Make sure you know how to evacuate. (Have you decided where to go and what routes to take?)
Evacuation Action Flow Chart

Alert Level 3 Based on the basic assumption or Maximum Assumption (Issued by Toyama City) **Evacuation of the elderly, etc.**

If it will take considerable time to evacuate*2 from a dangerous place*1, start evacuation. Others should be prepared for evacuation.

Alert Level 4 Based on the basic assumption or Maximum Assumption (Issued by Toyama City) **Evacuation order**

Please begin evacuation. At this point, everyone should be evacuated from the dangerous area*1.

~<Be sure to evacuate before Alert Level 4!>~

Alert Level 5 <Issued by Toyama City> **Emergency safety assurance** (Issued to the extent possible)

A disaster has occurred or is just about to occur. Secure your personal safety immediately.

*1 Those who are in a safe place need not evacuate to a designated emergency evacuation site. A safe place is the one that falls under all the following three categories:
1. Areas unaffected by floodwaters or riverbank erosion
2. Rooms in houses or facilities are higher than the level of flooding.
3. Areas where the residents are able to survive with enough water and food till the floodwater recedes.

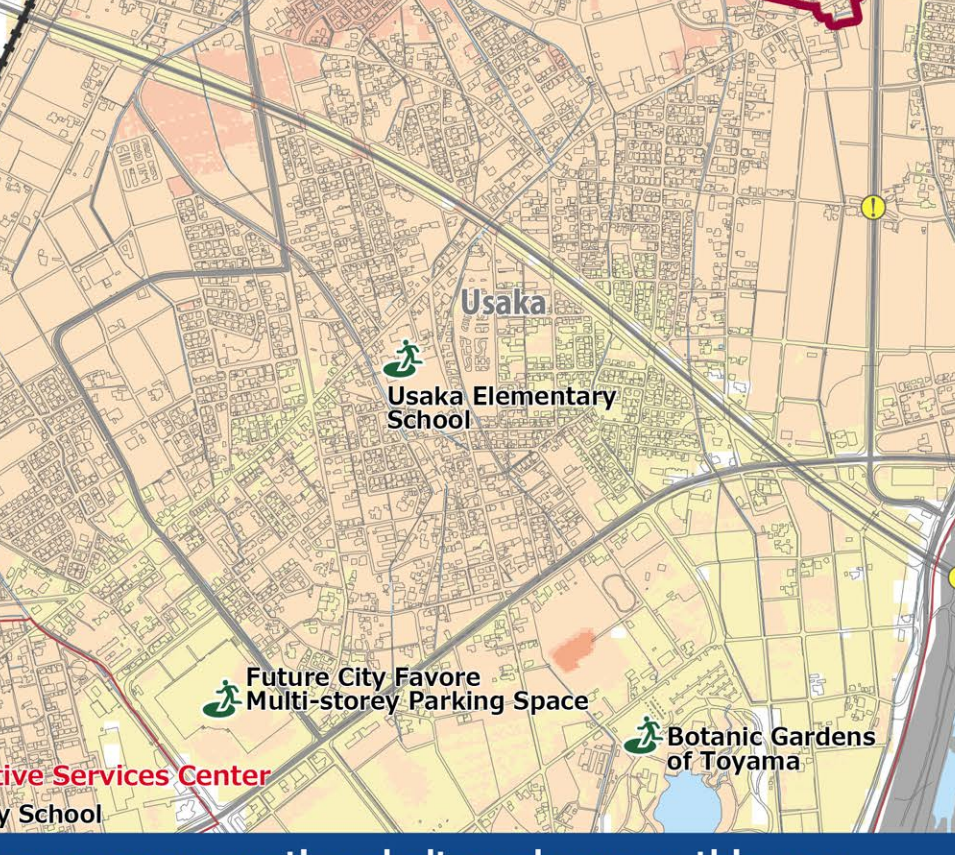
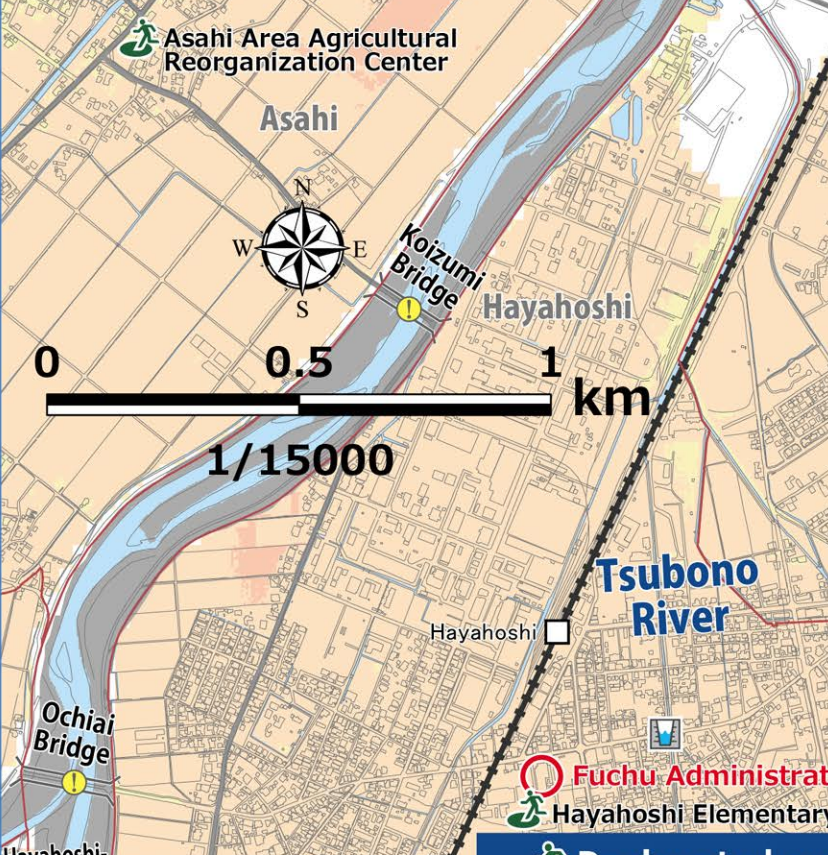
*2 Includes the elderly and people with disabilities, etc.

Disaster Emergency Message Dial (171)

Record How to record messages
PLAY How to play the recorded messages

Dial 171 Press 1 Enter your phone number (including the area code)
Record your message

Dial 171 Press 2 Enter your phone number (including the area code)
Play the message for you



Designated emergency evacuation shelters shown on this map (1/3)

School district	Name	Accessible floors	Risks at the maximum assumption	Address	Phone number (Area Code: 076)
		Minimum	Maximum		
Sakuradani	Sakuradani Elementary School	2F or higher	2F or higher	279 Takariya	432-4235
	Elementary School/Junior High School Attached to Toyama University	2F or higher	2F or higher	1300 Goso	445-2806
	Sakuradani Community Center	2F	N/A	279 Takariya	432-5607
Gofuku	Gofuku Elementary School	All floors accessible	2F or higher	4431-2 Gofuku	432-4786
	Seibu Junior High School	2F or higher	2F or higher	130 Gofuku	432-4787
	Toyama Technical High School	3F or higher	3F or higher	2238 Gofuku	441-1971
	University of Toyama Gofuku Campus (Common education building, etc.)	2F or higher	2F or higher	3190 Gofuku	445-6011
Gofuku	Toyama Special Support Needs School	2F	2F	4982 Kanaya	441-8261
	Toyama Toyopt Co., Ltd. G Square main shop	3F	3F	1238 Gohuku-Suehirocho	431-8111
Gofuku	Gofuku Community Center	All floors accessible	2F	4431-1 Gofuku	432-6363
	Shinmei Elementary School	3F	3F	147-2 Takata	421-7061
	Toyama Commercial High School	2F or higher	2F or higher	413 Shotakata	441-3438
	Sainou Hospital	4F	4F	70 Takata	422-2211
Shinmei	University of Toyama Gofuku Campus (School of Engineering)	2F or higher	2F or higher	3190 Gofuku	445-6011
	Toyama Pref. General Education Center	2F or higher	2F or higher	525 Takata	444-6161
	Hayahoshi Elementary School	2F or higher	2F or higher	751 Fuchumachi-Hayahoshi	466-2031
	Usaka Elementary School	2F or higher	2F or higher	68 Fuchumachi-Kamijima	466-2037
	Botanic Gardens of Toyama	2F	2F	42 Fuchumachi-Kamitawada	466-4187
	Future City Favors Multi-storey Parking Space	3F, 4F	3F, 4F	165-1 Fuchumachi-Shimokutsuwada	466-5000
Asahi	Asahi Elementary School	2F or higher	2F or higher	5518 Fuchumachi-Gejo	469-2392
	Asahi Area Agricultural Reorganization Center	2F	2F	281 Fuchumachi-Gejo	469-5110

Designated emergency evacuation shelters shown on this map (2/3)

School district	Name	Accessible floors	Risks at the maximum assumption	Address	Phone number (Area Code: 076)
		Minimum	Maximum		
Nagaoka	Nagaoka Elementary School	All floors accessible	All floors accessible	9420 Nagaoka	432-2594
Kureha	Kureha Junior High School	All floors accessible	All floors accessible	6171 Kurehamachi	434-3100
	Kureha Elementary School	1F, 2F	1F, 2F	2070-5 Kurehamachi	436-1056
	Toyama Art Creation Center	1F	1F	2247-3 Kurehamachi	434-4100

6 How to Obtain Information

You need information when you decide to evacuate. It is vital that you know what kind of information you need and how to get it. Collect information yourself in addition to alerts and information you receive.

Information that you will receive.

- Information on alert levels 3, 4, and 5, including evacuation orders; information on the possibility of flooding in the Jinzu and the Jogani Rivers
- Heavy rain warnings, flood warnings, and landslide warnings
- Weather warnings (including special warnings)

Information to be collected

- TV/Cable TV: Press the @ button to get the latest news on weather and evacuations!
- Rainfall conditions around your house: Check only from indoors and stay away from the river.
- The Japan Meteorological Agency (JMA) website: Emergency Warning, Warning, Advisory, Tropical Cyclone Information Risk Map etc.
- Toyama City Disaster Prevention on Facebook: Information on emergency evacuations and support for daily life after disasters
- Toyama City Website: Evacuation Preparations Support for daily life after disasters
- Toyama City Disaster Prevention News on Twitter: Toyama City issues evacuation instructions and other emergency disaster prevention news.

Advance registration is required.

- Early warning mail: Disaster prevention information immediately by email.
- Toyama Prefectural Landslide Warning Email Service: Receive relevant information immediately via email.
- Yahoo! Bosai Sokuho (Disaster News Flash) (app): Receive relevant information immediately via email.

Other information:

- These emails are automatically sent to you through phones within the city limits.
- See (Infomap Toyama) for locations of emergency broadcast system sites.
- Radio Always has a portable radio and open listening room!
- Toyama City FM: 77.7MHz
- NHK 1/2: 648kHz/103.5kHz
- NHK AM: 738kHz
- NHK FM: 81.5MHz
- KNB FM: 90.2MHz
- FM Toyama: 82.7MHz

Background map: 2018 Toyama City Topographic Map 1/2500 / 測量法に基づき国土院地籍情報提供 (R1)H4942
Copyright, contact: River Improvement Office, Public Works Construction Dept., Toyama City (09-440-221)

7 Evacuation Action Flow Chart

Check what you should do to evacuate!

Envision the evacuation actions you should take so you can evacuate quickly in an emergency.

(1) Which assumption based evacuation information should you use?

Start here
Your residence is in the colored areas*1 on the basic assumption (the left map) or the maximum assumption (the right map)

Yes: Evacuate if the maximum assumption-based evacuation information is issued. (Even if the basic assumption-based evacuation information is issued, stay alert, and try to collect information.)

No: Evacuate if the maximum assumption-based evacuation information is issued.

(2) What should I do?

In case your residence falls under 0 Areas that Require Early Evacuation*1:
Floodwaters, Riverbank erosion, Houses with a risk of flooding up to the top floor

Yes: Evacuate to a designated emergency shelter or other safe place.

No: When seeking refuge outdoors is dangerous. Evacuate if the maximum assumption-based evacuation information is issued.

Do not hesitate to evacuate to a designated emergency shelter or other safe place.

Please follow this evacuation procedure even if you evacuate according to the evacuation information for the basic assumption.

Evacuate (ground-level evacuation)
Evacuate (ground-level evacuation)
Evacuate (ground-level evacuation)

Seek refuge to your residence's upper floors that are unaffected by flooding.
Evacuate (ground-level evacuation)

Try to gather information and refrain from going out.
Evacuate (ground-level evacuation)

Ensure indoor safety.
Evacuate (ground-level evacuation)

Anyone with walking difficulties should prepare for Early Long-Distance Evacuation.