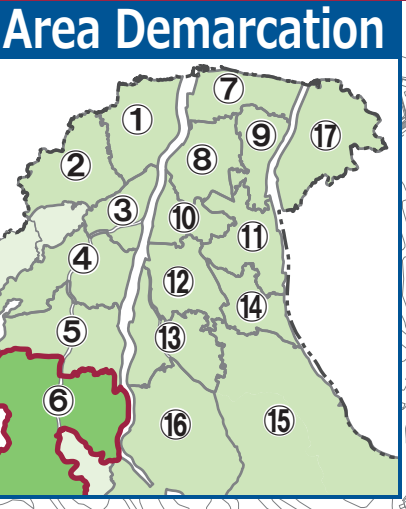
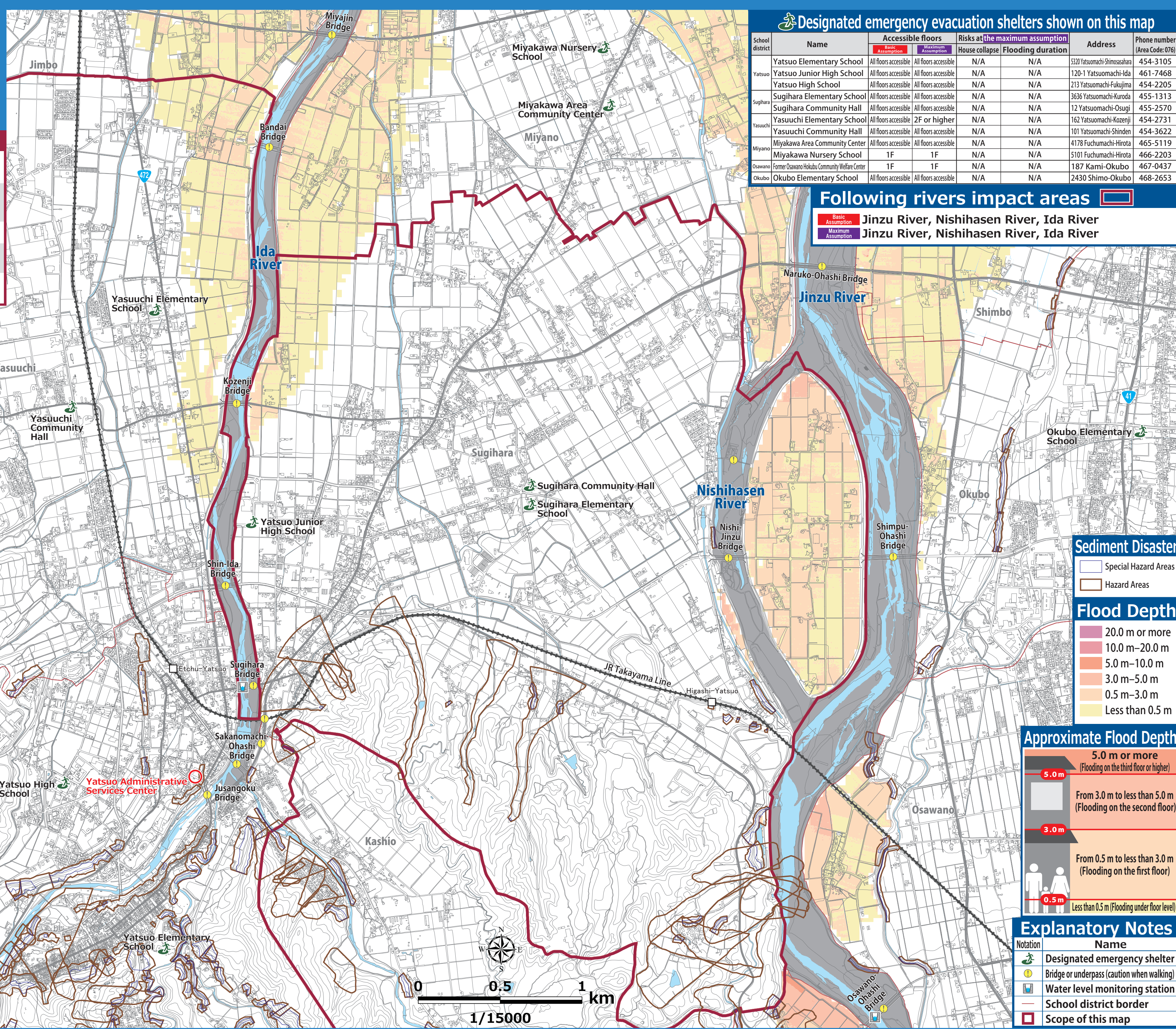


Toyama City
Flood Hazard Map
Detailed Area Map ③
(Yatsuo, Sugihara, Yasuuchi)

- ① Read this first.**
1. Evacuation from flooding.
 2. **Evacuation Information** The city will give you the information in accordance with each warning level.
 3. **Evacuation information for Alert Level 3 and 4** is issued by the city based on either **the basic assumption** (the top map) or **the maximum assumption** (the bottom map), depending on the rainfall forecast and other information.
 4. First, check the evacuation actions you should take under each scenario using the **③ Evacuation Action Flow Chart**.
 5. Next, check your evacuation routes and envision multiple evacuation sites beforehand, both inside and outside the school district, where you can safely evacuate.
 6. Make sure you understand **② How to Obtain Information** and get used to operating the system on a daily basis to prepare for any danger that may arise.



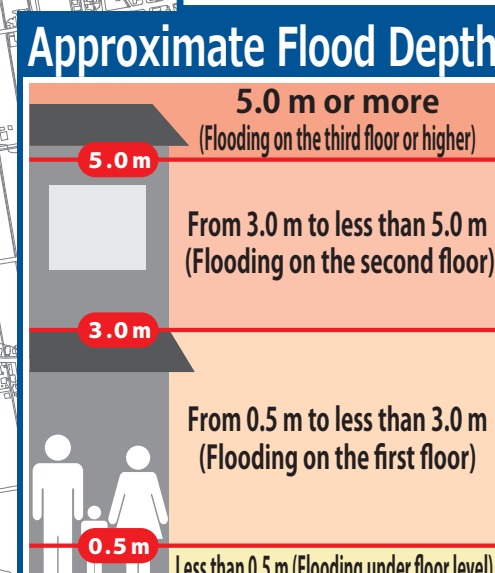
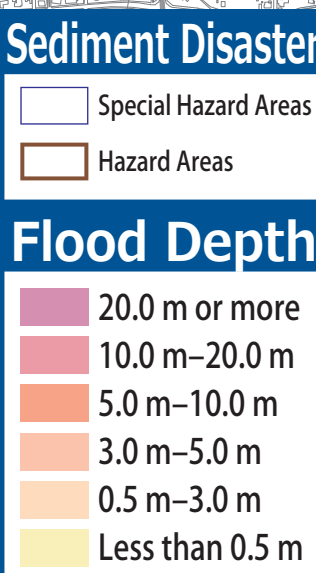
Basic Assumption
Assumed flooding caused by rainfall approximately once in every 30-150 years.
The city will issue evacuation information for alert levels 3 or 4 based on the basic assumption.



Designated emergency evacuation shelters shown on this map

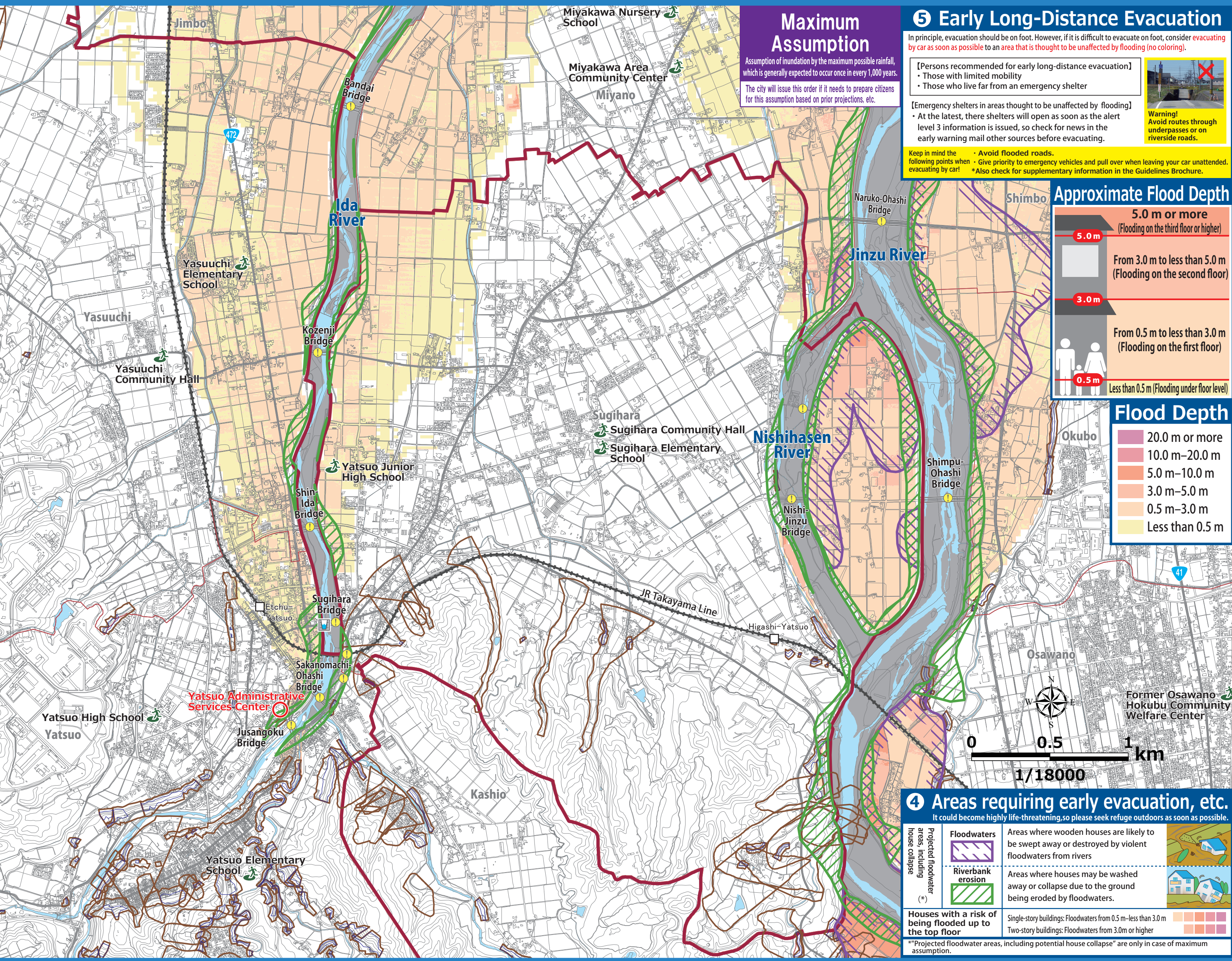
School district	Name	Accessible floors		Risks at the maximum assumption		Address	Phone number (Area Code:076)
		Basic Assumption	Maximum Assumption	House collapse	Flooding duration		
Yatsuo	Yatsuo Elementary School	All floors accessible	All floors accessible	N/A	N/A	3200 Yatsumachi-Shimosahara	454-3105
	Yatsuo Junior High School	All floors accessible	All floors accessible	N/A	N/A	120-1 Yatsumachi-Ida	461-7468
	Yatsuo High School	All floors accessible	All floors accessible	N/A	N/A	213 Yatsumachi-Fukujima	454-2205
Sugihara	Sugihara Elementary School	All floors accessible	All floors accessible	N/A	N/A	3636 Yatsumachi-Kuroda	455-1313
	Sugihara Community Hall	All floors accessible	All floors accessible	N/A	N/A	12 Yatsumachi-Osugi	455-2570
Yasuuchi	Yasuuchi Elementary School	All floors accessible	2F or higher	N/A	N/A	162 Yatsumachi-Kozenji	454-2731
	Yasuuchi Community Hall	All floors accessible	All floors accessible	N/A	N/A	101 Yatsumachi-Shinden	454-3622
Miyakawa	Miyakawa Nursery School	1F	1F	N/A	N/A	4178 Fuchumachi-Hirota	465-5119
	Miyakawa Area Community Center	1F	1F	N/A	N/A	5101 Fuchumachi-Hirota	466-2203
Osawano	Former Osawano-Hokubu Community Welfare Center	1F	1F	N/A	N/A	187 Kami-Okubo	467-0437
Okubo	Okubo Elementary School	All floors accessible	All floors accessible	N/A	N/A	2430 Shimo-Okubo	468-2653

Following rivers impact areas
Jinzu River, Nishihasen River, Ida River
Jinzu River, Nishihasen River, Ida River



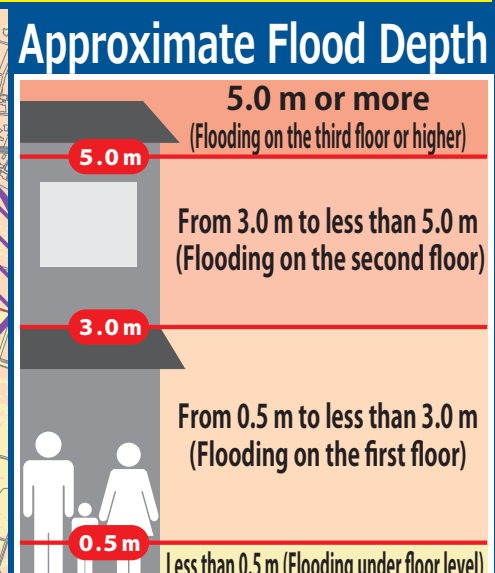
Explanatory Notes

Notation	Name
①	Designated emergency shelter
②	Bridge or underpass (caution when walking)
③	Water level monitoring station
④	School district border
⑤	Scope of this map



Maximum Assumption
Assumption of inundation by the maximum possible rainfall, which is generally expected to occur once in every 1,000 years.
The city will issue this order if it needs to prepare citizens for this assumption based on prior projections, etc.

⑤ Early Long-Distance Evacuation
In principle, evacuation should be on foot. However, if it is difficult to evacuate on foot, consider evacuating by car as soon as possible to an area that is thought to be unaffected by flooding (no coloring).
[Persons recommended for early long-distance evacuation]
• Those with limited mobility
• Those who live far from an emergency shelter
[Emergency shelters in areas thought to be unaffected by flooding]
• At the latest, there shelters will open as soon as the alert level 3 information is issued, so check for news in the early warning mail other sources before evacuating.
Keep in mind the following points when evacuating by car!
• Avoid flooded roads.
• Give priority to emergency vehicles and pull over when leaving your car unattended.
• Also check for supplementary information in the Guidelines Brochure.



④ Areas requiring early evacuation, etc.
It could become highly life-threatening, so please seek refuge outdoors as soon as possible.

- Floodwaters**
Areas where wooden houses are likely to be swept away or destroyed by violent floodwaters from rivers.
- Riverbank erosion**
Areas where houses may be washed away or collapse due to the ground being eroded by floodwaters.
- Houses with a risk of being flooded up to the top floor**
Single-story buildings: Floodwaters from 0.5 m-less than 3.0 m
Two-story buildings: Floodwaters from 3.0m or higher

Projected floodwater areas, including potential house collapse are only in case of maximum assumption.

⑥ How to Obtain Information
You need information when you decide to evacuate. It is vital that you know **what kind of information you need and how to get it.** Collect information yourself in addition to alerts and information you receive.

Information that you will receive.

Information on alert levels 3, 4, and 5, including evacuation orders; information on the possibility of flooding in the Jinzu and the Joganji Rivers

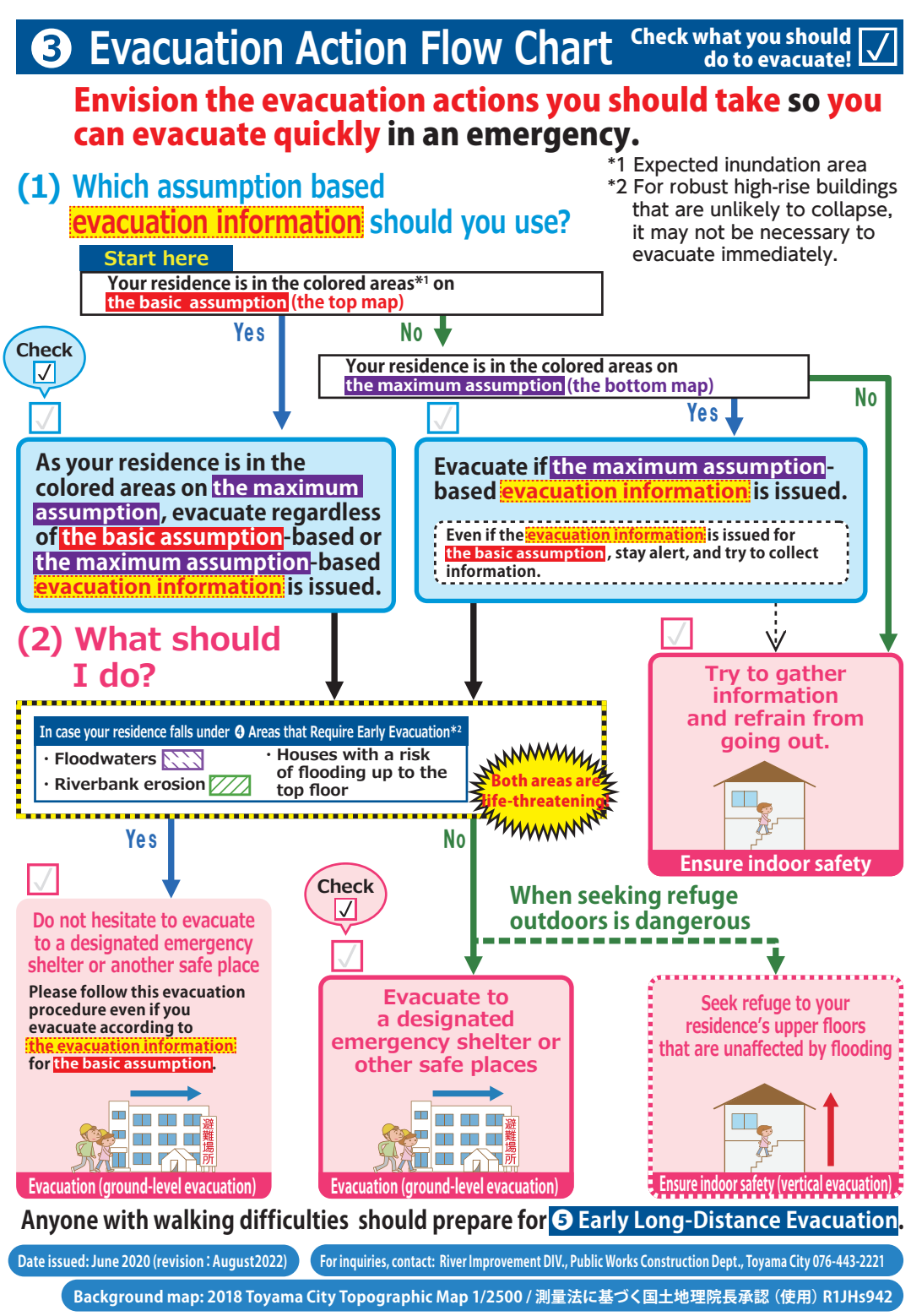
Early warning mail
These emails are automatically sent to you through public relations vehicle phones within the city limits.
Disaster prevention information collection
Public relations vehicle
See [Informap Toyama] for locations of emergency broadcast system sites.

Heavy rain warnings, flood warnings, and landslide warnings (including special warnings)
Toyama Prefectural Landslide Warning Email Service
Yahoo! Bousai Sokuhu [Disaster News Flash] (app)
Receive relevant information immediately via email.

Advance registration is required.

Information to be collect

- TV/Cable TV**
Press the **④ button** to get the latest news on weather and evacuations!
- Rainfall conditions around your house**
Check only from indoors and stay away from the river.
- Toyama Disaster Prevention Web**
Evacuation information
Evacuation shelter information
River water levels
Rainfall figures
- The Japan Meteorological Agency (JMA) website**
Emergency Warning, Advisory
Tropical Cyclone Information
Risk Map etc.
- Toyama City Disaster Prevention on Facebook**
@bousai.toyama
Information on emergency evacuations and support for daily life after disasters
- Toyama City Disaster Prevention News on Twitter**
@bousai_toyama
Toyama City issues evacuation instructions and other emergency disaster prevention news.
- Toyama City Website**
Evacuation Preparations
Support for daily life after disasters



Disaster Emergency Message Dial (171)

Record
How to record messages
Dial 171
Press 1
Enter your phone number (including the area code)
Record your message

PLAY
How to play the recorded messages
Dial 171
Press 2
Enter your phone number (including the area code)
Play the message for you

② Evacuation Information. (Evacuation actions according to Alert Level)

Alert Level 1
[Issued by the JMA] Early warning information
Increase your preparedness for the disaster. (Make an effort to gather information in case of an emergency.) See **③ How to Obtain Information**

Alert Level 2
[Issued by the JMA] Heavy Rain Advisory Flood Advisory
Make sure you know how to evacuate. (Have you decided where to go and what routes to take?)
③ Evacuation Action Flow Chart Check

Alert Level 3
Based on the basic assumption or the maximum assumption [Issued by Toyama City]
Evacuation of the elderly, etc.
If it will take considerable time to evacuate**2 from a dangerous place*1, start evacuation. Others should be prepared for evacuation.

Alert Level 4
Based on the basic assumption or the maximum assumption [Issued by Toyama City]
Evacuation order
Please begin evacuation. At this point, everyone should be evacuated from the dangerous area*1.

Alert Level 5
<Issued by Toyama City> Emergency safety assurance
(Issued to the extent possible)
A disaster has occurred or is just about to occur. Secure your personal safety immediately.

*1 Those who are in a safe place need not evacuate to a designated emergency evacuation site.
A safe place is the one that falls under all the following three categories:
1. Areas unaffected by floodwaters
2. Rooms in houses or facilities are higher than the level of flooding.
3. Areas where the residents are able to survive with enough water and food till the floodwater recedes.
Check the flooding duration here:
**2 Includes the elderly and people with disabilities, etc.