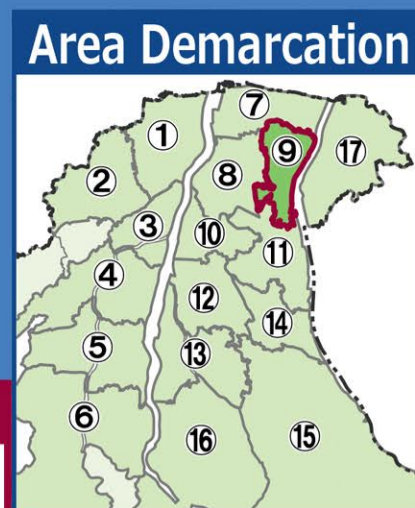


# Toyama City Flood Hazard Map

Detailed Area Map (Harihara, Shinjo Kita)



### Following rivers impact areas

**Basic Assumption**  
Assumed flooding caused by rainfall approximately once in every 30-150 years.  
The city will issue evacuation information for alert levels 3 or 4 based on the basic assumption.

**Maximum Assumption**  
Assumption of inundation by the maximum possible rainfall, which is generally expected to occur once in every 1,000 years.  
The city will issue this order if it needs to prepare citizens for this assumption based on prior projections, etc.

### Maximum Assumption

Assumption of inundation by the maximum possible rainfall, which is generally expected to occur once in every 1,000 years.  
The city will issue this order if it needs to prepare citizens for this assumption based on prior projections, etc.

### Early Long-Distance Evacuation

In principle, evacuation should be on foot. However, if it is difficult to evacuate on foot, consider evacuating by car as soon as possible to an area that is thought to be unaffected by flooding (see coloring).

**[Persons recommended for early long-distance evacuation]**

- Those with limited mobility
- Those who live far from an emergency shelter

[Emergency shelters in areas thought to be unaffected by flooding]

- At the latest, these shelters will open as soon as the alert level 3 information is issued, so check for news in the early warning mail and other sources before evacuating.

Keep in mind the following points when evacuating by car:

- Avoid flooded roads.
- Give priority to emergency vehicles and pull over when leaving your car unattended, evacuating by car.
- Also check for supplementary information in the Guidelines Brochure.

### 2 Evacuation Information

(Evacuation actions according to Alert Level)

**Alert Level 1** [Issued by the JMA] **Early warning information**

Increase your preparedness for the disaster. (Make an effort to gather information in case of an emergency.)  
See How to Obtain Information

- ### 1 Read this first.
- Evacuation from flooding.
  - Evacuation Information: The city will give you the information in accordance with each warning level.
  - Evacuation Information for Alert Level 3 and 4 is issued by the city based on either the **basic assumption** (the left map) or the **maximum assumption** (the right map), depending on the rainfall forecast and other information.
  - First, check the evacuation actions you should take under each scenario using the **Evacuation Action Flow Chart**.
  - Next, check your evacuation routes and envision multiple evacuation sites beforehand, both inside and outside the school district, where you can safely evacuate.
  - Make sure you understand **How to Obtain Information** and get used to operating the system on a daily basis to prepare for any danger that may arise.

**Alert Level 2** [Issued by the JMA] **Heavy Rain Advisory Flood Advisory**

Make sure you know how to evacuate. (Have you decided where to go and what routes to take?)  
Evacuation Action Flow Chart Check

**Alert Level 3** Based on the **basic assumption** or **maximum assumption** (Issued by Toyama City) **Evacuation of the elderly, etc.**

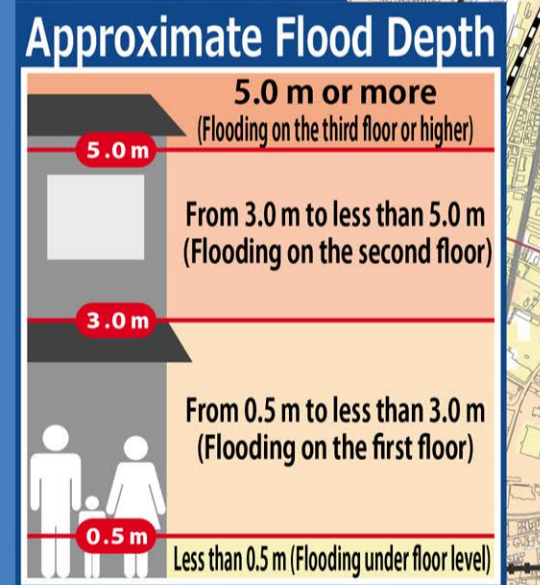
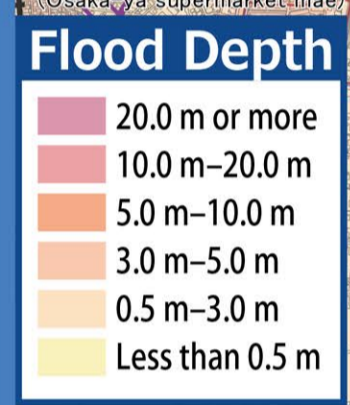
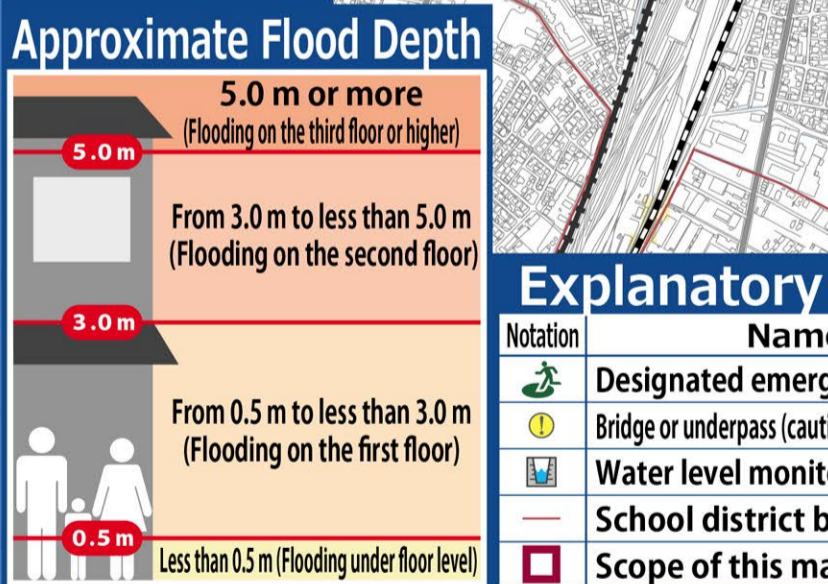
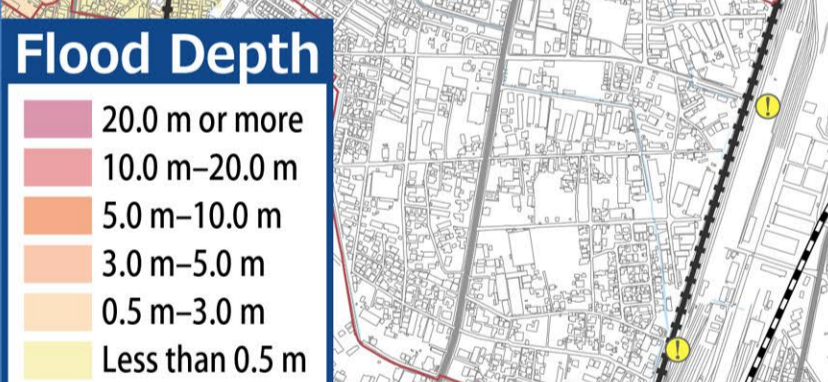
If it will take considerable time to evacuate\*2 from a dangerous place\*1, start evacuation. Others should be prepared for evacuation.

**Alert Level 4** Based on the **basic assumption** or **maximum assumption** (Issued by Toyama City) **Evacuation order**

Please begin evacuation. At this point, everyone should be evacuated from the dangerous area\*1.

**Alert Level 5** <Issued by Toyama City> **Emergency safety assurance** (Issued to the extent possible)

A disaster has occurred or is just about to occur. Secure your personal safety immediately.



### 4 Areas requiring early evacuation, etc.

It could become highly life-threatening so please seek refuge outdoors as soon as possible.

- Floodwaters**: Areas where wooden houses are likely to be swept away or destroyed by violent floodwaters from rivers.
- Riverbank erosion**: Areas where houses may be washed away or collapse due to the ground being eroded by floodwaters.
- Houses with a risk of being flooded up to the top floor**: Single-story buildings: Floodwaters from 0.5 m-less than 3.0 m; Two-story buildings: Floodwaters from 3.0m or higher.

### 6 How to Obtain Information

You need information when you decide to evacuate. It is vital that you know what kind of information you need and how to get it. Collect information yourself in addition to alerts and information you receive.

### Information that you will receive.

- Information on alert levels 3, 4, and 5, including evacuation orders; information on the possibility of flooding in the Jinzu and the Joganni Rivers
- Heavy rain warnings, flood warnings, and landslide warnings
- Weather warnings (including special warnings)

### Information to be collected

- Press the @ button to get the latest news on weather and evacuations!
- Check only from indoors and stay away from the river.
- Evacuation information: Evacuation shelter information, River water levels, Rainfall figures

### 7 Evacuation Action Flow Chart

Check what you should do to evacuate!

Envision the evacuation actions you should take so you can evacuate quickly in an emergency.

**(1) Which assumption based evacuation information should you use?**

Start here: Your residence is in the colored areas\*1 on the basic assumption (the left map) or the maximum assumption (the right map).

**(2) What should I do?**

In case your residence falls under 4 Areas that Require Early Evacuation\*1: Floodwaters, Riverbank erosion, Houses with a risk of flooding up to the top floor.

Evacuate if the maximum assumption-based evacuation information is issued. Even if the basic assumption-based evacuation information is issued, stay alert, and try to collect information.

Evacuate to a designated emergency shelter or other safe places.

Seek refuge to your residence's upper floors that are unaffected by flooding.

Try to gather information and refrain from going out.

Evacuation (ground-level evacuation), Evacuation (ground-level evacuation), Ensure indoor safety (vertical evacuation), Ensure indoor safety.

### Explanatory Notes

Notation	Name
	Designated emergency shelter
	Bridge or underpass (caution when walking)
	Water level monitoring station
	School district border
	Scope of this map

### Designated emergency evacuation shelters shown on this map (1/2)

School district	Name	Accessible floors	Risks at the maximum assumption	Address	Phone number (Area Code: 076)
Harihara	Harihara Elementary School	2F	N/A	523-1 Harihara-Nakamachi	451-2556
	Toyama Higashi High School	2F or higher	N/A	6-1 Shinomino-Arata	437-9018
	Toyama Municipal Baseball Stadium	All floors accessible	N/A	30-1 Shimoino	451-0900
	Harihara Community Center	2F	N/A	90-2 Harihara-Nakamachi	451-2555
Shinjo	Driving Education Center	2F or higher	N/A	62-1 Takashima	441-2211
	Koshi Support School	1F	N/A	29-1 Dosho	438-4811
	Shinjo Kita Elementary School	2F or higher	N/A	2-411 Shinjo-Honmachi	452-0180
	Toyama Prefecture Polytechnic Institute	2F	N/A	1-148 Mukai-Shinjomachi	451-8802
Hagiura	Toyama Daiichi High School	2F or higher	N/A	1-140 Mukai-Shinjomachi	451-3396
	Toyama City Vocational training center	2F or higher	N/A	1-140 Mukai-Shinjomachi	451-7500
	Hagiura Elementary School	All floors accessible	N/A	2-11-28 Takabatakemachi	437-9619
	Iwase Junior High School	2F or higher	N/A	4-3-10 Hasumachi	438-3311
Ohira	Toyama Community Center	All floors accessible	N/A	4-3-20 Hasumachi	437-7188
	Hagiura Community Center	2F	N/A	2-11-36 Takabatakemachi	437-7923
	Toyama Prefecture Iwase Sports Park	1F	N/A	5-1-17 Mori	438-4880
	Ohira Elementary School	All floors accessible	N/A	183 Tabata	438-5115
Shinjo	Hokubu Junior High School	All floors accessible	N/A	2-4-52 Higashi-Toyama-Kobanbashi	437-9161
	Koho High School	1F	N/A	1-1-39 Higashi-Toyama-Kobanbashi	438-5111
	Ohira Community Center	All floors accessible	N/A	4-3-924	437-9924
	Toyota Elementary School	All floors accessible	N/A	2-1 Yoneda	438-5131
Toyota	Toyota Community Center	All floors accessible	N/A	1-2-5 Toyota-Honmachi	437-9313
	Toyota Nursery School	All floors accessible	N/A	1-2-3 Toyota-Honmachi	438-5171
	Toyota Adaptation Guidance Class	All floors accessible	N/A	3-12-25 Toyowakacho	482-4682
	Hirota Elementary School	All floors accessible	N/A	22-53 Nabeta	451-6280
Hirota	Hirota Community Center	All floors accessible	N/A	1-3 Araya	451-5601
	Apita Toyamahigashi Multi-storey Parking Space	3F	N/A	3-8-38 Kamifugo	452-3311
	Shinjo Elementary School	All floors accessible	N/A	1-6-30 Shinjomachi	432-2773
	Shinjo Junior High School	All floors accessible	N/A	5-4-18 Arakawa	421-5775
Shinjo	Shinjo Community Center	2F	N/A	1-3-16 Shinjomachi	432-2742
	Shinjo Nursery School	2F	N/A	3-4-20 Shinjomachi	432-7290
	Fujinoki Elementary School	2F or higher	N/A	1246 Fujinoki	421-8261
	Fujinoki Junior High School	2F or higher	N/A	222 Himata	493-1570
Fujinoki	Fujinoki Community Center	2F	N/A	144 Oeboshi	423-8417
	Fujinoki Elementary School	2F	N/A	1246 Fujinoki	421-2444

### Designated emergency evacuation shelters shown on this map (2/2)

School district	Name	Accessible floors	Risks at the maximum assumption	Address	Phone number (Area Code: 076)
Shinjo	Shinjo Elementary School	All floors accessible	N/A	1-6-30 Shinjomachi	432-2773
	Shinjo Junior High School	All floors accessible	N/A	5-4-18 Arakawa	421-5775
	Shinjo Community Center	2F	N/A	1-3-16 Shinjomachi	432-2742
	Shinjo Nursery School	2F	N/A	3-4-20 Shinjomachi	432-7290
Fujinoki	Fujinoki Elementary School	2F or higher	N/A	1246 Fujinoki	421-8261
	Fujinoki Junior High School	2F or higher	N/A	222 Himata	493-1570
	Fujinoki Community Center	2F	N/A	144 Oeboshi	423-8417
	Fujinoki Elementary School	2F	N/A	1246 Fujinoki	421-2444

- \*1 Those who are in a safe place need not evacuate to a designated emergency evacuation site. A safe place is the one that falls under all the following three categories.
- Areas unaffected by floodwaters or riverbank erosion.
  - Rooms in houses or facilities are higher than the level of flooding.
  - Areas where the residents are able to survive with enough water and food till the floodwater recedes.
- \*2 Includes the elderly and people with disabilities, etc.

### Disaster Emergency Message Dial (171)

Record How to record messages | Dial 171 Press 1 | Record your message

PLAY How to play the recorded messages | Dial 171 Press 2 | Play the message for you