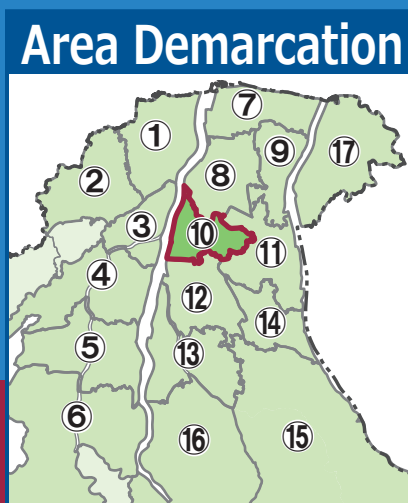


# Toyama City Flood Hazard Map

Detailed Area Map ⑩  
(Shibazono, Nishidenjigata, Chuo, Yanagimachi, Tobu)

## 1 Read this first.

- Evacuation from flooding.  
② **Evacuation Information.** The city will give you the information in accordance with each warning level.
- Evacuation information on Alert Level 1 and 2** is issued by the city based on either the **basic assumption** (the left map) or the **maximum assumption** (the right map), depending on the rainfall forecast and other information.
- First, check the evacuation actions you should take under each scenario using the ③ **Evacuation Action Flow Chart**.
- Next, check your evacuation routes and envision multiple evacuation sites beforehand, both inside and outside the school district, where you can safely evacuate.
- Make sure you understand ④ **How to Obtain Information** and get used to operating the system on a daily basis to prepare for any danger that may arise.



## Designated emergency evacuation shelters shown on this map (3/3)

School district	Name	Accessible floors		Risks at the maximum assumption		Address	Phone number (Area Code: 076)
		Basic Assumption	Maximum Assumption	House collapse	Flooding duration		
Shibazono	Sakuradani Elementary School	2F or higher	2F or higher	N/A	12 hours or less than 1 day	279 Takariya	432-4235
	Elementary School/Junior High School Attached to Toyama University	2F or higher	2F or higher	N/A	1 day to less than 3 days	1300 Goso	445-2806
	Sakuradani Community Center	2F	2F	N/A	12 hours or less than 1 day	279 Takariya	432-5607
	Toyama Technical High School	3F or higher	3F or higher	Floodwaters	1 day to less than 3 days	2238 Gofuku	441-1971
Gofuku	Toyama Toyopet Co., Ltd. G Square main shop	3F	3F	Floodwaters	1 day to less than 3 days	1238 Gohuku-Suehirocho	431-8111
Okuda	Okuda Elementary School	2F or higher	2F or higher	N/A	12 hours or less than 1 day	10-18 Okuda-Futabacho	441-3746
	Okuda Junior High School	2F or higher	2F or higher	N/A	12 hours or less than 1 day	25-10 Okuimachi	441-3628
	Toyama Special Needs School for the Hearing Impaired	2F or higher	2F or higher	N/A	Less than 12 hours	1-9-56 Shimo-Okui	441-9172
	Toyama Prefectural Kyosei Center	2F or higher	2F or higher	Floodwaters	1 day to less than 3 days	6-7 Minatoirumicho	432-4500
Hirota	Okuda Kita Elementary School	2F or higher	3F or higher	Floodwaters	1 day to less than 3 days	3-72 Shimoshin-Kitamachi	432-1415
	Hirota Elementary School	All floors accessible	All floors accessible	N/A	N/A	22-53 Nabeta	451-6280
	Hirota Community Center	All floors accessible	All floors accessible	N/A	N/A	1-3 Araya	451-5601
	Apita Toyamahigashi Multi-storey Parking Space	3F	3F	N/A	N/A	3-8-38 Kamifugo	452-3311
Shinjo	Shinjo Elementary School	All floors accessible	All floors accessible	N/A	N/A	1-6-30 Shinjomachi	432-2773
	Shinjo Junior High School	2F or higher	2F or higher	N/A	N/A	5-4-18 Arakawa	421-5775
	Shinjo Community Center	2F	2F	N/A	N/A	1-3-16 Shinjomachi	432-2742
	Shinjo Nursery School	2F	2F	N/A	N/A	3-4-20 Shinjomachi	432-7290
	Toyama City Swimming pool	All floors accessible	2F	N/A	Less than 12 hours	4-1-70 Arakawa	491-8899

## Following rivers impact areas

**Basic Assumption**  
Joganji River, Jinzu River, Kumano River, Itachi River, Dogawa River

**Maximum Assumption**  
Joganji River, Jinzu River, Kumano River, Itachi River, Dogawa River

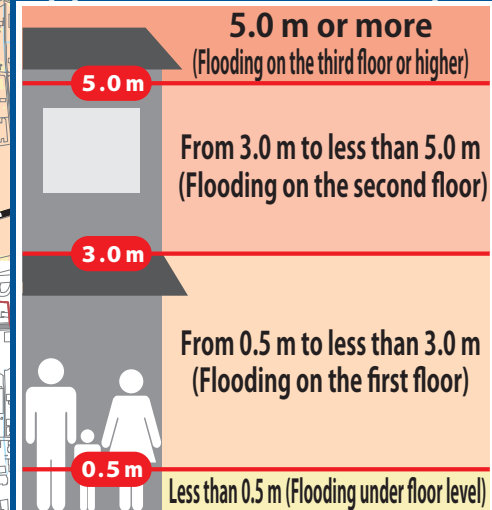
**Basic Assumption**  
Assumed flooding caused by rainfall approximately once in every 30-150 years.  
The city will issue evacuation information for alert levels 3 or 4 based on the basic assumption.

**Explanatory Notes**

Notation

- Designated emergency shelter
- Bridge or underpass (caution when walking)
- Water level monitoring station
- School district border
- Scope of this map

## Approximate Flood Depth



**Flood Depth**

- 20.0 m or more
- 10.0 m-20.0 m
- 5.0 m-10.0 m
- 3.0 m-5.0 m
- 0.5 m-3.0 m
- Less than 0.5 m

**Sediment Disaster**

- Special Hazard Areas
- Hazard Areas

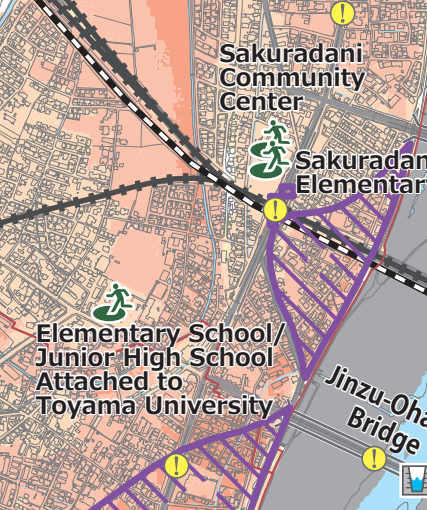
**Maximum Assumption**  
Assumption of inundation by the maximum possible rainfall, which is generally expected to occur once in every 1,000 years.  
The city will issue this order if it needs to prepare citizens for this assumption based on prior projections, etc.

**Explanatory Notes**

Notation

- Designated emergency shelter
- Bridge or underpass (caution when walking)
- Water level monitoring station
- School district border
- Scope of this map

## Approximate Flood Depth



**Flood Depth**

- 20.0 m or more
- 10.0 m-20.0 m
- 5.0 m-10.0 m
- 3.0 m-5.0 m
- 0.5 m-3.0 m
- Less than 0.5 m

**Sediment Disaster**

- Special Hazard Areas
- Hazard Areas

## 4 Areas requiring early evacuation, etc.

It could become highly life-threatening so please seek refuge outdoors as soon as possible.

<b>Floodwaters</b>	Areas where wooden houses are likely to be swept away or destroyed by violent floodwaters from rivers
<b>Riverbank erosion</b>	Areas where houses may be washed away or collapse due to the ground being eroded by floodwaters.
<b>Houses with a risk of being flooded up to the top floor</b>	Single-story buildings: Floodwaters from 0.5 m less than 3.0 m Two-story buildings: Floodwaters from 3.0 m or higher

\*Projected floodwater areas, including potential house collapse\* are only in case of maximum assumption.

## 5 Early Long-Distance Evacuation

In principle, evacuation should be on foot. However, if it is difficult to evacuate on foot, consider evacuating by car as soon as possible to an area that is thought to be unaffected by flooding (no coloring).

[Persons recommended for early long-distance evacuation]  
• Those with limited mobility  
• Those who live far from an emergency shelter

[Emergency shelters in areas thought to be unaffected by flooding]  
• At the latest, shelters will open as soon as the alert level 3 information is issued, so check for news in the early warning mail and other sources before evacuating.

Keep in mind the following points when evacuating by car!  
• Avoid flooded roads.  
• Give priority to emergency vehicles and pull over when leaving your car unattended.  
• Also check for supplementary information in the Guidelines Brochure.

## 6 How to Obtain Information

You need information when you decide to evacuate. It is vital that you know what kind of information you need and how to get it. Collect information yourself in addition to alerts and information you receive.

## Information that you will receive.

Information on alert levels 3, 4, and 5, including evacuation orders; information on the possibility of flooding in the Jinzu and the Joganji Rivers

Early warning mail  
Disaster prevention advisory radio  
Public relations vehicle

Heavy rain warnings, flood warnings, and landslide warnings  
Toyama Prefectural Landslide Warning Email Service

Weather warnings (including special warnings)  
Yahoo! Bosai Sokoku (Disaster News Flash) (app)

These emails are automatically sent to you through phones within the city limits.

See (Toyoma Toyama) for locations of emergency broadcast system sites.

## Information to be collected

TV/Cable TV  
Press the @ button to get the latest news on weather and evacuations!

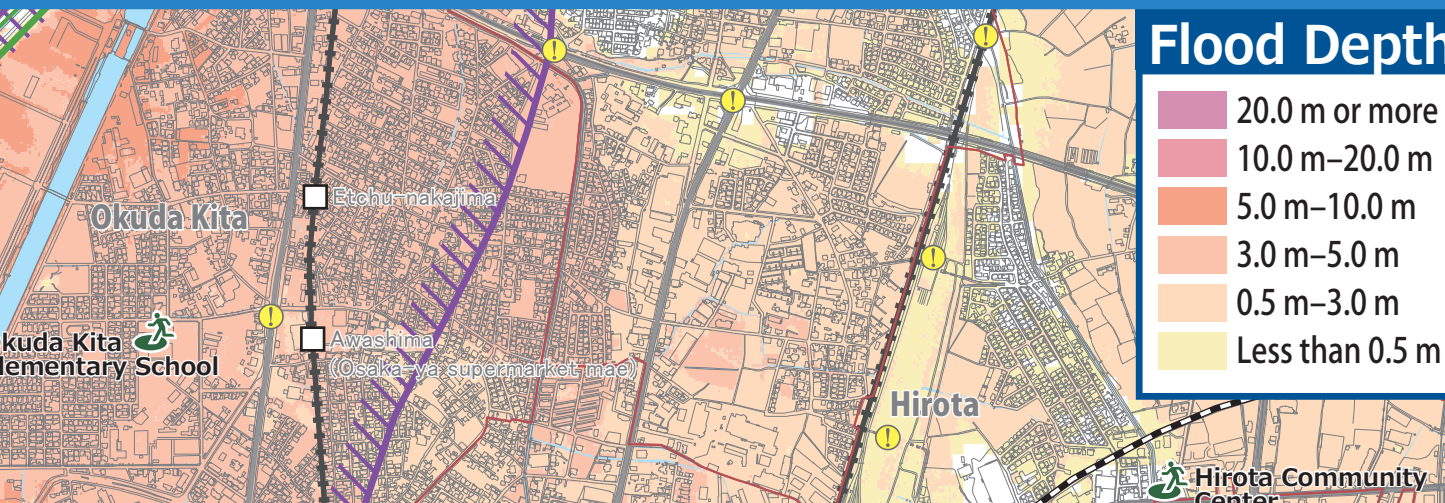
Check only from indoors and stay away from the river.

The Japan Meteorological Agency (JMA) website  
Emergency Warning, Warning, Advisory Tropical Cyclone Information Risk Map etc.

Toyama City Disaster Prevention on Facebook  
@bousai.toyama  
Information on emergency evacuations and support for daily life after disasters

Toyama City Disaster Prevention News on Twitter  
@bousai\_toyama  
Toyama City issues evacuation instructions and other emergency disaster prevention news.

Date issued: June 2020 (revision: August 2022)  
Background map: 2018 Toyama City Topographic Map 1/2500 / 測量法に基づく国土院院長承認 (使用) R1JH942  
Inquiries contact: River Improvement 2nd, Public Works Construction Dept., Toyama City 076-445-2221



## 2 Evacuation Information.

(Evacuation actions according to Alert Level)

**Alert Level 1** [Issued by the JMA] **Early warning information**

Increase your preparedness for the disaster. (Make an effort to gather information in case of an emergency.)  
See ③ How to Obtain Information

**Alert Level 2** [Issued by the JMA] **Heavy Rain Advisory Flood Advisory**

Make sure you know how to evacuate. (Have you decided where to go and what routes to take?)  
③ Evacuation Action Flow Chart Check

**Alert Level 3** Based on the basic assumption or maximum assumption (Issued by Toyama City) **Evacuation of the elderly, etc.**

If it will take considerable time to evacuate\*2 from a dangerous place\*1, start evacuation. Others should be prepared for evacuation.

**Alert Level 4** Based on the basic assumption or maximum assumption (Issued by Toyama City) **Evacuation order**

Please begin evacuation. At this point, everyone should be evacuated from the dangerous area\*1.

~~~~~Be sure to evacuate before Alert Level 4!~~~~~

**Alert Level 5** <Issued by Toyama City> **Emergency safety assurance** (Issued to the extent possible)

A disaster has occurred or is just about to occur. Secure your personal safety immediately.

\*1 Those who are in a safe place need not evacuate to a designated emergency evacuation site. A safe place is the one that falls under all the following three categories.  
1. Areas unaffected by floodwaters or riverbank erosion  
2. Rooms in houses or facilities are higher than the level of flooding.  
3. Areas where the residents are able to survive with enough water and food till the floodwater recedes.

\*2 Includes the elderly and people with disabilities, etc.

## Disaster Emergency Message Dial (171)

Record How to record messages  
Dial 171 Press 1 Enter your phone number (including the area code)  
Record your message

PLAY How to play the recorded messages  
Dial 171 Press 2 Enter your phone number (including the area code)  
Play the message for you

Check what you should do to evacuate! [X]

**7 Evacuation Action Flow Chart**

Envision the evacuation actions you should take so you can evacuate quickly in an emergency.

(1) Which assumption based evacuation information should you use?

Start here  
Your residence is in the colored areas\*1 on the basic assumption (the left map)  
Yes  
No  
Your residence is in the colored areas on the maximum assumption (the right map)  
Yes  
No

As your residence is in the colored areas on the maximum assumption, evacuate regardless of the basic assumption-based or the maximum assumption-based evacuation information is issued.

Evacuate if the maximum assumption-based evacuation information is issued. Even if the evacuation information is issued for the basic assumption, stay alert, and try to collect information.

(2) What should I do?

In case your residence falls under ④ Areas that Require Early Evacuation\*  
Floodwaters Riverbank erosion Houses with a risk of flooding up to the top floor  
Yes  
No  
When seeking refuge outdoors is dangerous

Do not hesitate to evacuate to a designated emergency shelter or another safe place.  
Please follow this evacuation procedure even if you evacuate according to the basic assumption.

Evacuate to a designated emergency shelter or other safe places

Seek refuge to your residence's upper floors that are unaffected by flooding

Try to gather information and refrain from going out.

Evacuation (ground-level evacuation) Evacuation (ground-level evacuation) Evacuation (ground-level evacuation) Evacuation (ground-level evacuation)

Evacuation (ground-level evacuation) Evacuation (ground-level evacuation) Evacuation (ground-level evacuation) Evacuation (ground-level evacuation)

Evacuation (ground-level evacuation) Evacuation (ground-level evacuation) Evacuation (ground-level evacuation) Evacuation (ground-level evacuation)

Evacuation (ground-level evacuation) Evacuation (ground-level evacuation) Evacuation (ground-level evacuation) Evacuation (ground-level evacuation)

Evacuation (ground-level evacuation) Evacuation (ground-level evacuation) Evacuation (ground-level evacuation) Evacuation (ground-level evacuation)

**2 Evacuation Information.**  
(Evacuation actions according to Alert Level)

**Alert Level 1** [Issued by the JMA] **Early warning information**

Increase your preparedness for the disaster. (Make an effort to gather information in case of an emergency.)  
See ③ How to Obtain Information

**Alert Level 2** [Issued by the JMA] **Heavy Rain Advisory Flood Advisory**

Make sure you know how to evacuate. (Have you decided where to go and what routes to take?)  
③ Evacuation Action Flow Chart Check

**Alert Level 3** Based on the basic assumption or maximum assumption (Issued by Toyama City) **Evacuation of the elderly, etc.**

If it will take considerable time to evacuate\*2 from a dangerous place\*1, start evacuation. Others should be prepared for evacuation.

**Alert Level 4** Based on the basic assumption or maximum assumption (Issued by Toyama City) **Evacuation order**

Please begin evacuation. At this point, everyone should be evacuated from the dangerous area\*1.

~~~~~Be sure to evacuate before Alert Level 4!~~~~~

**Alert Level 5** <Issued by Toyama City> **Emergency safety assurance** (Issued to the extent possible)

A disaster has occurred or is just about to occur. Secure your personal safety immediately.

\*1 Those who are in a safe place need not evacuate to a designated emergency evacuation site. A safe place is the one that falls under all the following three categories.  
1. Areas unaffected by floodwaters or riverbank erosion  
2. Rooms in houses or facilities are higher than the level of flooding.  
3. Areas where the residents are able to survive with enough water and food till the floodwater recedes.

\*2 Includes the elderly and people with disabilities, etc.

## Disaster Emergency Message Dial (171)

Record How to record messages  
Dial 171 Press 1 Enter your phone number (including the area code)  
Record your message

PLAY How to play the recorded messages  
Dial 171 Press 2 Enter your phone number (including the area code)  
Play the message for you

Check what you should do to evacuate! [X]

**7 Evacuation Action Flow Chart**

Envision the evacuation actions you should take so you can evacuate quickly in an emergency.

(1) Which assumption based evacuation information should you use?

Start here  
Your residence is in the colored areas\*1 on the basic assumption (the left map)  
Yes  
No  
Your residence is in the colored areas on the maximum assumption (the right map)  
Yes  
No

As your residence is in the colored areas on the maximum assumption, evacuate regardless of the basic assumption-based or the maximum assumption-based evacuation information is issued.

Evacuate if the maximum assumption-based evacuation information is issued. Even if the evacuation information is issued for the basic assumption, stay alert, and try to collect information.

(2) What should I do?

In case your residence falls under ④ Areas that Require Early Evacuation\*  
Floodwaters Riverbank erosion Houses with a risk of flooding up to the top floor  
Yes  
No  
When seeking refuge outdoors is dangerous

Do not hesitate to evacuate to a designated emergency shelter or another safe place.  
Please follow this evacuation procedure even if you evacuate according to the basic assumption.

Evacuate to a designated emergency shelter or other safe places

Seek refuge to your residence's upper floors that are unaffected by flooding

Try to gather information and refrain from going out.

Evacuation (ground-level evacuation) Evacuation (ground-level evacuation) Evacuation (ground-level evacuation) Evacuation (ground-level evacuation)

Evacuation (ground-level evacuation) Evacuation (ground-level evacuation) Evacuation (ground-level evacuation) Evacuation (ground-level evacuation)

Evacuation (ground-level evacuation) Evacuation (ground-level evacuation) Evacuation (ground-level evacuation) Evacuation (ground-level evacuation)

Evacuation (ground-level evacuation) Evacuation (ground-level evacuation) Evacuation (ground-level evacuation) Evacuation (ground-level evacuation)

Evacuation (ground-level evacuation) Evacuation (ground-level evacuation) Evacuation (ground-level evacuation) Evacuation (ground-level evacuation)

Evacuation (ground-level evacuation) Evacuation (ground-level evacuation) Evacuation (ground-level evacuation) Evacuation (ground-level evacuation)