

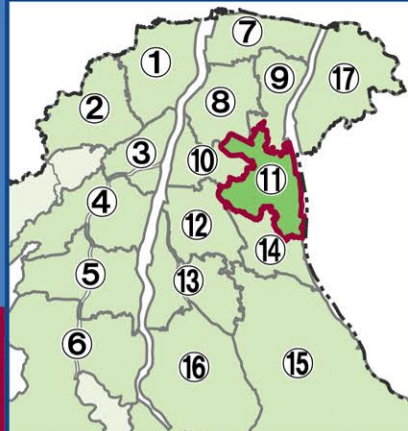
Toyama City Flood Hazard Map

Detailed Area Map ①
(Shinjo, Fujinoki, Yamamuro, Yamamuro Chubu)

① Read this first.

- Evacuation from flooding.
- Evacuation Information:** The city will give you the information in accordance with each warning level.
- Evacuation Information for Alert Level 3 and 4:** It is issued by the city based on either the **basic assumption** (the left map) or the **maximum assumption** (the right map), depending on the rainfall forecast and other information.
- First, check the evacuation actions you should take under each scenario using the **Evacuation Action Flow Chart**.
- Next, check your evacuation routes and envision multiple evacuation sites beforehand, both inside and outside the school district, where you can safely evacuate.
- Make sure you understand **How to Obtain Information** and get used to operating the system on a daily basis to prepare for any danger that may arise.

Area Demarcation



| School district | Name | Accessible floors | | Risks at the maximum assumption | | Address | Phone number (Area Code: 076) |
|-----------------|--|-----------------------|-----------------------|---------------------------------|-----------------------------|-------------------------|-------------------------------|
| | | Basic Assumption | Maximum Assumption | House collapse | Flooding duration | | |
| Okuda | Okuda Junior High School | 2F or higher | 2F or higher | N/A | 12 hours or less than 1 day | 25-10 Okumachi | 441-3628 |
| Hirota | Apita Toyamahigashi Multi-storey Parking Space | 3F | 3F | N/A | N/A | 3-8-38 Kamifugo | 452-3311 |
| Yanaginimachi | Inarimotomachi Nursery School | 2F | 2F | N/A | Less than 12 hours | 2-13-13 Inari-Motomachi | 441-6719 |
| Shinjo | Shinjo Elementary School | All floors accessible | 2F | N/A | N/A | 4-4-44 Ishigane | 421-3445 |
| Shinjo | Shinjo Junior High School | 2F or higher | 2F or higher | N/A | Less than 12 hours | 4-4-60 Nagae-Shimachi | 421-5395 |
| Shinjo | Fujikoshi Technical High School | 2F or higher | 2F or higher | N/A | N/A | 7-5 Higashi-Ishigane | 425-8304 |
| Shinjo | Shinjo Community Center | All floors accessible | All floors accessible | N/A | N/A | 1-2-13 Ishigane | 421-3204 |
| Shinjo | Toyama Prefectural University Toyama Campus | 2F or higher | 2F or higher | N/A | Less than 12 hours | 2-2-78 Nishi-Nagae | 464-5410 |

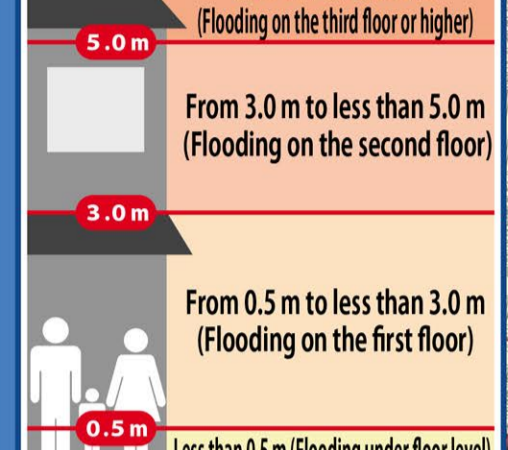
Basic Assumption

Assumed flooding caused by rainfall approximately once in every 30-150 years. The city will issue evacuation information for alert levels 3 or 4 based on the basic assumption.

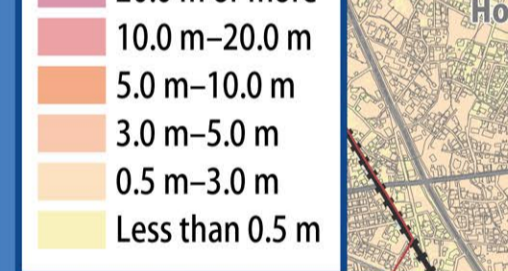
Maximum Assumption

Assumption of inundation by the maximum possible rainfall, which is generally expected to occur once in every 1,000 years. The city will issue this order if it needs to prepare citizens for this assumption based on prior projections, etc.

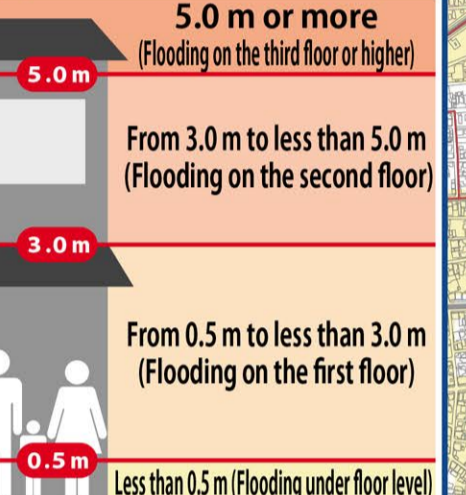
Approximate Flood Depth



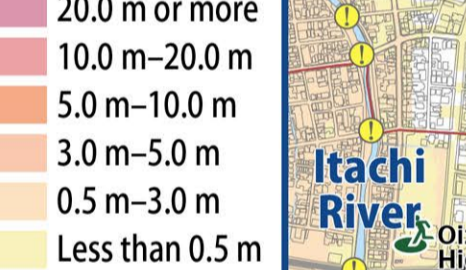
Flood Depth



Approximate Flood Depth



Flood Depth



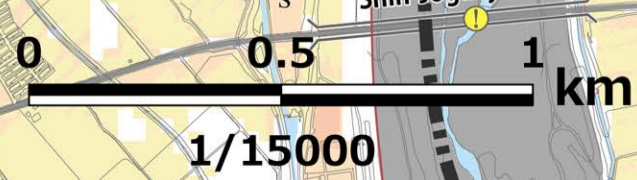
Designated emergency evacuation shelters shown on this map (1/2)

| School district | Name | Accessible floors | Risks at the maximum assumption | Address | Phone number (Area Code: 076) |
|-----------------|---|-----------------------|---------------------------------|-----------------------------|-------------------------------|
| Shinjo | Shinjo Elementary School | All floors accessible | N/A | 1-6-30 Shinjomachi | 432-2773 |
| | Shinjo Junior High School | All floors accessible | N/A | 5-4-18 Arakawa | 421-5775 |
| | Shinjo Community Center | 2F | N/A | 1-3-16 Shinjomachi | 432-2742 |
| | Shinjo Nursery School | 2F | N/A | 3-4-20 Shinjomachi | 432-7290 |
| | Toyama City Swimming pool | 2F | N/A | 4-1-70 Arakawa | 491-8899 |
| Fujinoki | Fujinoki Elementary School | 2F or higher | N/A | 1246 Fujinoki | 421-8261 |
| | Fujinoki Junior High School | 2F or higher | N/A | 222 Himata | 493-1570 |
| | Toyama Special Needs School for the visually impaired | 2F or higher | N/A | 144 Oeoboshi | 423-8417 |
| | Fujinoki Community Center | 2F | N/A | 1246 Fujinoki | 421-2444 |
| | Yamamuro Elementary School | 2F or higher | N/A | 2-10-5 Nakaichi | 421-2802 |
| Yamamuro | Yamamuro Junior High School | All floors accessible | N/A | 30-1 Yamamuro | 421-5372 |
| | Year 2000 Gymnasium | All floors accessible | N/A | 1400 Tenshoji | 420-2000 |
| | Yamamuro Community Center | All floors accessible | N/A | 2-8-76 Nakaichi | 421-2801 |
| | Yamamuro Childcare Center | 1F | N/A | 5-3 Yamamuro | 421-3362 |
| | Yamamuro Chubu Elementary School | All floors accessible | N/A | 162-2 Yamamuroaraya | 423-1135 |
| Yamamuro Chubu | Yamamuro Childrevis Center | 1F | N/A | 573-5 Takayashiki | 492-1377 |
| | Yamamuro Chubu Community Center | 2F | N/A | 84 Yamamuroaraya | 492-3405 |
| | Shinjo Kita Elementary School | 2F or higher | N/A | 2-4-11 Shinjo-Honmachi | 452-0180 |
| | Toyama Prefecture Polytechnic Institute | 2F | N/A | 1-11-48 Mukai-Shinjomachi | 451-8802 |
| | Toyama Daiichi High School | 2F or higher | N/A | 5-1-54 Mukai-Shinjomachi | 451-3396 |
| Horikawa | Toyama City Vocational training center | 2F or higher | N/A | 1-14-40 Mukai-Shinjomachi | 451-7500 |
| | Horikawa Elementary School | 2F or higher | N/A | 1-13-10 Horikawa-Kozumicho | 424-1911 |
| | Oizumi Junior High School | 2F or higher | N/A | 1-11-36 Oizumi-Higashimachi | 425-4433 |
| | Horikawa Junior High School | 2F or higher | N/A | 1-21-15 Horikawa-Kozumicho | 424-3646 |
| | Toyama Izumi High School | 2F or higher | N/A | 1-21-15 Horikawa-Kozumicho | 424-4274 |
| Horikawa Minami | Horikawa Community Center | 2F | N/A | 1-18-13 Horikawa-Kozumicho | 425-1530 |
| | Horikawa Nursery School | 2F | N/A | 1-16-34 Horikawa-Kozumicho | 421-9456 |
| | Horikawa Minami Elementary School | All floors accessible | N/A | 282-3 Hongomachi | 423-1124 |
| | Horikawa Minami Community Center | 2F | N/A | 243-45 Hongomachi | 492-3450 |
| | Ota Elementary School | 2F or higher | N/A | 14-2 Ota | 421-6619 |
| Jikoen | Jikoen | 2F | N/A | 104-1 Nishinoban | 492-9911 |
| | Aikuen | 2F | N/A | 104-1 Nishinoban | 492-9912 |

Explanatory Notes
 Notation
 Designated emergency shelter
 Bridge or underpass (caution when walking)
 Water level monitoring station
 School district border
 Scope of this map

Following rivers impact areas

Joganji River
 Joganji River, Jinzu River, Itachi River



⑤ Early Long-Distance Evacuation

In principle, evacuation should be on foot. However, if it is difficult to evacuate on foot, consider evacuating by car as soon as possible to an area that is thought to be unaffected by flooding (no coloring).
 [Persons recommended for early long-distance evacuation]
 • Those with limited mobility
 • Those who live far from an emergency shelter
 • Those who can evacuate early in the following school districts, which are likely to have insufficient capacity at evacuation shelters within walking distance:
Basic Assumption: Fujinoki, Yamamuro Chubu
Maximum Assumption: Fujinoki, Yamamuro Chubu
 [Emergency shelters in areas thought to be unaffected by flooding]
 • At the latest, these shelters will open as soon as the alert level 3 information is issued, so check for news in the early warning mail and other sources before evacuating.
 Keep in mind the following points when evacuating by car:
 • Avoid flooded roads.
 • Give priority to emergency vehicles and pull over when leaving your car unattended, evacuating by car.
 • Also check for supplementary information in the Guidelines Brochure.

④ Areas requiring early evacuation, etc.

It could become highly life-threatening so please seek refuge outdoors as soon as possible.
 [Floodwaters] Areas where wooden houses are likely to be swept away or destroyed by violent floodwaters from rivers.
 [Riverbank erosion] Areas where houses may be washed away or collapse due to the ground being eroded by floodwaters.
 [Single-story buildings] Floodwaters from 0.5 m-less than 3.0 m.
 [Two-story buildings] Floodwaters from 3.0 m or higher.
 [Houses with a risk of being flooded up to the top floor] Single-story buildings: Floodwaters from 0.5 m-less than 3.0 m. Two-story buildings: Floodwaters from 3.0 m or higher.
 [Projected floodwater areas, including potential house collapse*] are only in case of maximum assumption.

⑥ How to Obtain Information

You need information when you decide to evacuate. It is vital that you know what kind of information you need and how to get it. Collect information yourself in addition to alerts and information you receive.

Information that you will receive.

Information on alert levels 3, 4, and 5, including evacuation orders; information on the possibility of flooding in the Jinzu and the Joganji Rivers

- Early warning mail
- Disaster prevention (emergency radio)
- Public relations vehicle
- Toyama Prefectural Landslide Warning Email Service
- Weather warnings (including special warnings)
- Yahoo! Bosai Sokuho (Disaster News Flash) (app)

These emails are automatically sent to you through phones within the city limits.

See (Tofomapp Toyama) for locations of emergency broadcast system sites.

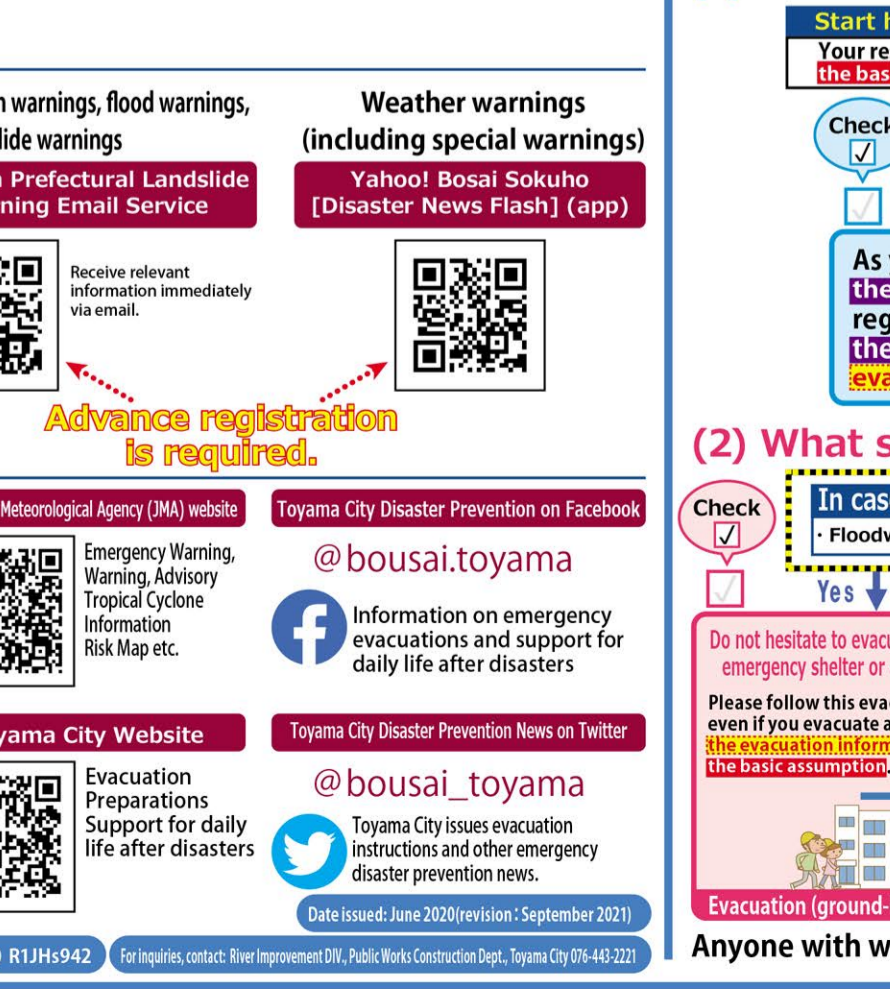
Information to be collected

- TV/Cable TV: Press the @ button to get the latest news on weather and evacuations!
- Rainfall conditions around your house: Check only from indoors and stay away from the river.
- The Japan Meteorological Agency (JMA) website: Emergency Warning, Warning Advisory, Tropical Cyclone Information Risk Map etc.
- Toyama City Disaster Prevention on Facebook: @bousai.toyama
- Information on emergency evacuations and support for daily life after disasters
- Radio (Always have a portable radio and open batteries ready!): NHK 1/2 648kHz/1035kHz, KNB AM 738kHz, NHK FM 81.5MHz, KNB FM 90.2MHz, FM Toyama 82.7MHz, Toyama City FM 77.7MHz
- Toyama Disaster Prevention Web: Evacuation information, Evacuation shelter information, River water levels, Rainfall figures
- Toyama City Website: Evacuation Preparations, Support for daily life after disasters
- Toyama City Disaster Prevention News on Twitter: @bousai_toyama
- Toyama City issues evacuation instructions and other emergency disaster prevention news.

© Copyright, contact: River Improvement Office, Public Works Construction Dept., Toyama City (09-440-221)

⑦ Evacuation Action Flow Chart

Envision the evacuation actions you should take so you can evacuate quickly in an emergency.



② Evacuation Information. (Evacuation actions according to Alert Level)

Alert Level 1 [Issued by the JMA] **Early warning information**
 Increase your preparedness for the disaster. (Make an effort to gather information in case of an emergency.)
 See ① How to Obtain Information

Alert Level 2 [Issued by the JMA] **Heavy Rain Advisory Flood Advisory**
 Make sure you know how to evacuate. (Have you decided where to go and what routes to take?)
 ① Evacuation Action Flow Chart Check

Alert Level 3 Based on the basic assumption or Maximum Assumption [Issued by Toyama City] **Evacuation of the elderly, etc.**
 If it will take considerable time to evacuate*2 from a dangerous place*1, start evacuation. Others should be prepared for evacuation.

Alert Level 4 Based on the basic assumption or Maximum Assumption [Issued by Toyama City] **Evacuation order**
 Please begin evacuation. At this point, everyone should be evacuated from the dangerous area*1.

Alert Level 5 <Issued by Toyama City> **Emergency safety assurance** (Issued to the extent possible)
 A disaster has occurred or is just about to occur. Secure your personal safety immediately.

*1 Those who are in a safe place need not evacuate to a designated emergency evacuation site. A safe place is the one that falls under all the following three categories.
 1. Areas unaffected by floodwaters or riverbank erosion
 2. Rooms in houses or facilities are higher than the level of flooding.
 3. Areas where the residents are able to survive with enough water and food till the floodwater recedes.
 Check the flooding duration here. →
 *2 Includes the elderly and people with disabilities, etc.

Disaster Emergency Message Dial (171)
 Record How to record messages
 Dial 171 Press 1 Enter your phone number (including the area code) Record your message
 PLAY How to play the recorded messages
 Dial 171 Press 2 Enter your phone number (including the area code) Play the message for you