

Toyama City Flood Hazard Map

Detailed Area Map 12 (Koyo, Horikawa, Horikawa Minami, Ninagawa)

- ### 1 Read this first.
- Evacuation from flooding.
 - Evacuation Information:** The city will give you the information in accordance with each warning level.
 - Evacuation Information for Alert Level 3 and 4:** is issued by the city based on either the **basic assumption** (the left map) or the **maximum assumption** (the right map), depending on the rainfall forecast and other information.
 - First, check the evacuation actions you should take under each scenario using the **Evacuation Action Flow Chart**.
 - Next, check your evacuation routes and envision multiple evacuation sites beforehand, both inside and outside the school district, where you can safely evacuate.
 - Make sure you understand **How to Obtain Information** and get used to operating the system on a daily basis to prepare for any danger that may arise.

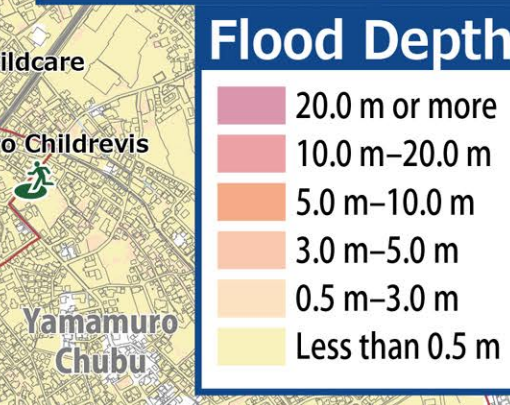
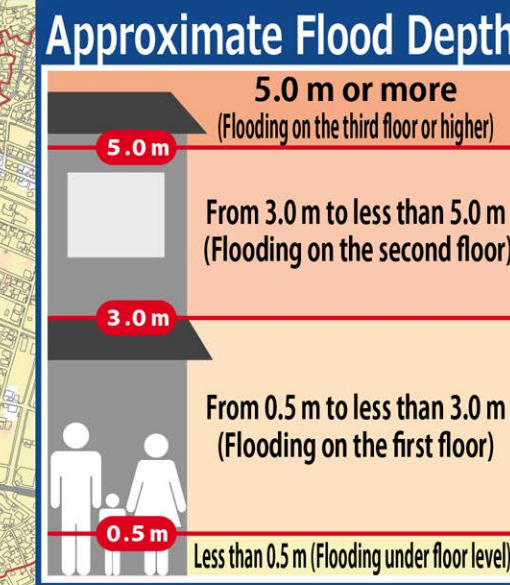
Designated emergency evacuation shelters shown on this map (2/3)

School district	Name	Accessible floors		Risks at the maximum assumption		Address	Phone number (Area Code:076)
		Basic Assumption	Maximum Assumption	House collapse	Flooding duration		
Shibazono	Ground parking	2F or higher	2F or higher	N/A	Less than 12 hours	3-6-15-13 Sogawa	495-7789
	Toyama Shimin Plaza	2F or higher	2F or higher	Floodwaters	1 day to less than 3 days	6-14 Otomachi	495-1313
	Wakuru Sogawa	1F	1F	N/A	Less than 12 hours	3-4-1 Sogawa	239-5520
Matsuyama	Nishidenjigata Elementary School	2F or higher	2F or higher	Floodwaters	1 day to less than 3 days	1-1-25 Nishi-Denjigatamachi	423-8538
	Nambu Junior High School	2F or higher	2F or higher	N/A	Less than 12 hours	1-1-25 Nishi-Denjigatamachi	424-3617
	Toyama City Science Museum	2F or higher	2F or higher	N/A	Less than 12 hours	1-8-31 Nishi-Nakanomachi	491-2123
Chuo	Hoshicho Community Center	2F	2F	N/A	Less than 12 hours	2-1-24 Nishi-Nakanomachi	492-2260
	Toyama City Kadokawa Care prevention	2F	2F	N/A	Less than 12 hours	2-3-30 Hoshicho	422-1220
	Chuo Elementary School	2F or higher	2F or higher	N/A	1 day to less than 3 days	4-35 Gokanomachi	421-6490
Toyama	Toyama Incubator Office	2F	2F	N/A	Less than 12 hours	2-3-22 Chuodori	420-3760

Basic Assumption

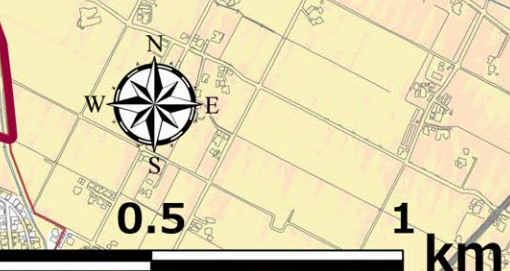
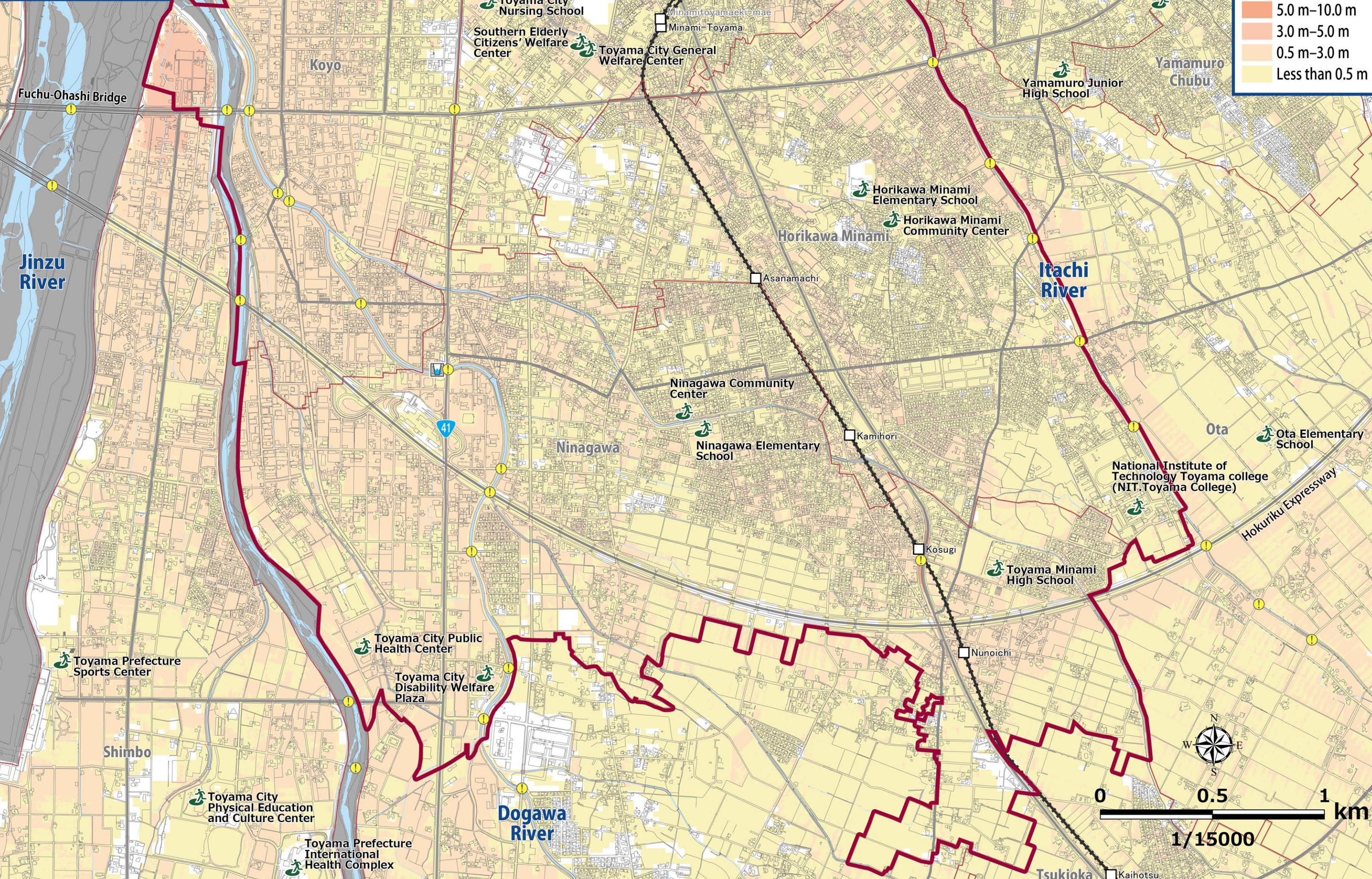
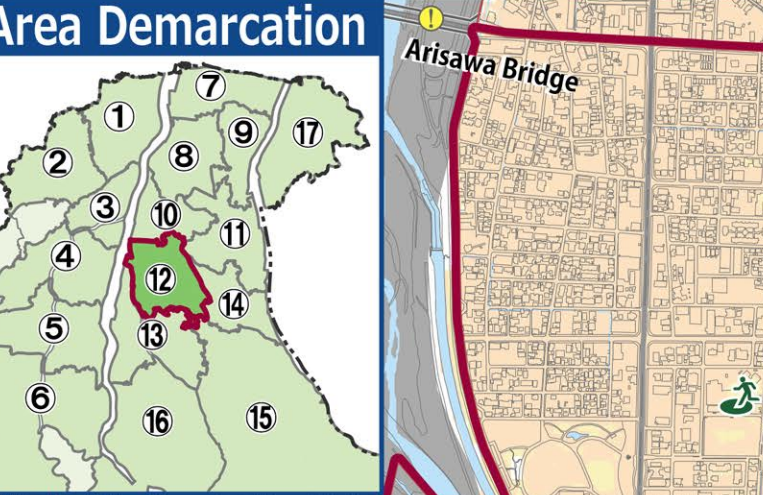
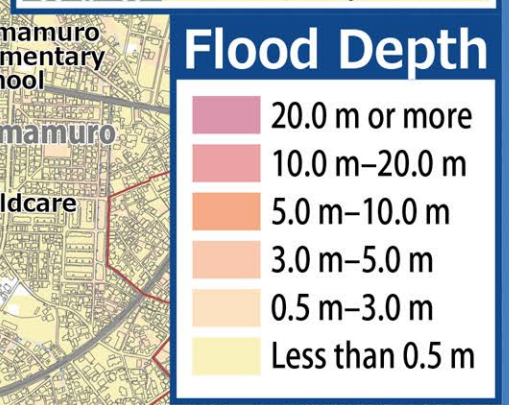
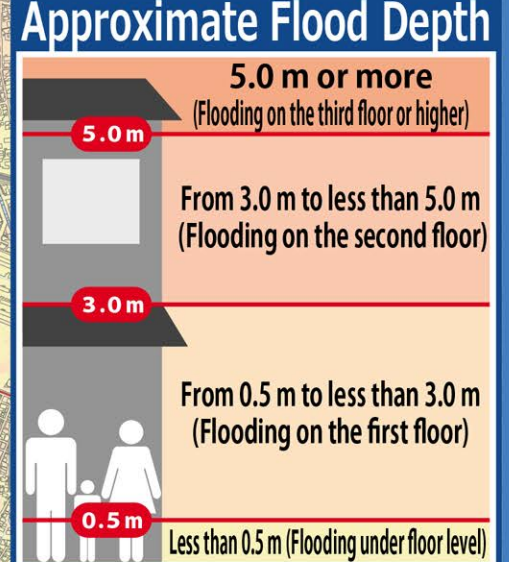
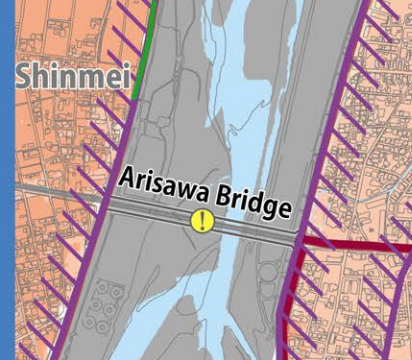
Assumed flooding caused by rainfall approximately once in every 30-150 years. The city will issue evacuation information for alert levels 3 or 4 based on the basic assumption.

- ### Explanatory Notes
- Designated emergency shelter
 - Bridge or underpass (caution when walking)
 - Water level monitoring station
 - School district border
 - Scope of this map



Maximum Assumption

Assumption of inundation by the maximum possible rainfall, which is generally expected to occur once in every 1,000 years. The city will issue this order if it needs to prepare citizens for this assumption based on prior projections, etc.



4 Areas requiring early evacuation, etc.

It could become highly life-threatening so please seek refuge outdoors as soon as possible.

- Floodwaters:** Areas where wooden houses are likely to be swept away or destroyed by violent floodwaters from rivers.
- Riverbank erosion:** Areas where houses may be washed away or collapse due to the ground being eroded by floodwaters.
- Houses with a risk of being flooded up to the top floor:** Single-story buildings: Floodwaters from 0.5 m-less than 3.0 m. Two-story buildings: Floodwaters from 3.0m or higher.

6 How to Obtain Information

You need information when you decide to evacuate. It is vital that you know what kind of information you need and how to get it. Collect information yourself in addition to alerts and information you receive.

Information that you will receive.

- Information on alert levels 3, 4, and 5, including evacuation orders; information on the possibility of flooding in the Jinzu and the Jogani Rivers
- Heavy rain warnings, flood warnings, and landslide warnings
- Weather warnings (including special warnings)

Information to be collected

- TV/Cable TV: Press the @ button to get the latest news on weather and evacuations!
- Rainfall conditions around your house: Check only from indoors and stay away from the river.
- The Japan Meteorological Agency (JMA) website: Emergency Warning, Emergency Advisory, Tropical Cyclone Information Risk Map etc.
- Toyama City Disaster Prevention on Facebook: Information on emergency evacuations and support for daily life after disasters
- Toyama City Website: Evacuation Preparations Support for daily life after disasters
- Toyama City Disaster Prevention News on Twitter: Toyama City issues evacuation instructions and other emergency disaster prevention news.

5 Early Long-Distance Evacuation

In principle, evacuation should be on foot. However, if it is difficult to evacuate on foot, consider evacuating by car as soon as possible to an area that is thought to be unaffected by flooding (no coloring).

[Persons recommended for early long-distance evacuation]

- Those with limited mobility
- Those who live far from an emergency shelter
- Those who can evacuate early in the following school districts, which are likely to have insufficient capacity at evacuation shelters within walking distance:

Basic Assumption: Horikawa Minami, Ninagawa
Maximum Assumption: Horikawa Minami, Ninagawa

[Emergency shelters in areas thought to be unaffected by flooding]

- At the latest, shelters will open as soon as the alert level 3 information is issued, so check for news in the early warning mail and other sources before evacuating.
- Keep in mind the following points when...
 - Avoid flooded roads.
 - Give priority to emergency vehicles and pull over when leaving your car unattended, evacuating by car.
 - Also check for supplementary information in the Guidelines Brochure.

Evacuation Action Flow Chart

Envision the evacuation actions you should take so you can evacuate quickly in an emergency.

(1) Which assumption based evacuation information should you use?

Start here: Your residence is in the colored areas*1 on the basic assumption (the left map) or the maximum assumption (the right map).

Check: Yes/No

If Yes: As your residence is in the colored areas on the maximum assumption, evacuate regardless of the basic assumption-based or the maximum assumption-based evacuation information is issued.

If No: Evacuate if the maximum assumption-based evacuation information is issued.

(2) What should I do?

In case your residence falls under 0 Areas that Require Early Evacuation*1:

- Floodwaters: Riverbank erosion: Houses with a risk of flooding up to the top floor.
- When seeking refuge outdoors is dangerous: Evacuate to a designated emergency shelter or other safe places.
- Seek refuge to your residence's upper floors that are unaffected by flooding.
- Try to gather information and refrain from going out.

Evacuation (ground-level evacuation) | Evacuation (ground-level evacuation) | Ensure indoor safety (vertical evacuation) | Ensure indoor safety

Anyone with walking difficulties should prepare for 5 Early Long-Distance Evacuation.

2 Evacuation Information. (Evacuation actions according to Alert Level)

Alert Level 1

Early warning information (Issued by the JMA)

Increase your preparedness for the disaster. (Make an effort to gather information in case of an emergency.)

See How to Obtain Information

Alert Level 2

Heavy Rain Advisory Flood Advisory (Issued by the JMA)

Make sure you know how to evacuate. (Have you decided where to go and what routes to take?)

See Evacuation Action Flow Chart

Alert Level 3

Evacuation of the elderly, etc. (Based on the basic assumption or maximum assumption Issued by Toyama City)

If it will take considerable time to evacuate*2 from a dangerous place*1, start evacuation. Others should be prepared for evacuation.

Alert Level 4

Evacuation order (Based on the basic assumption or maximum assumption Issued by Toyama City)

Please begin evacuation. At this point, everyone should be evacuated from the dangerous area*1.

Alert Level 5

Emergency safety assurance (Issued to the extent possible) (Issued by Toyama City)

A disaster has occurred or is just about to occur. Secure your personal safety immediately.

*1 Those who are in a safe place need not evacuate to a designated emergency evacuation site. A safe place is the one that falls under all the following three categories.

- Areas unaffected by floodwaters or riverbank erosion
- Rooms in houses or facilities are higher than the level of flooding.
- Areas where the residents are able to survive with enough water and food till the floodwater recedes.

*2 Includes the elderly and people with disabilities, etc.

Designated emergency evacuation shelters shown on this map (1/3)

School district	Name	Accessible floors		Risks at the maximum assumption		Address	Phone number (Area Code:076)
		Basic Assumption	Maximum Assumption	House collapse	Flooding duration		
Koyo	Koyo Elementary School	2F or higher	2F or higher	N/A	Less than 12 hours	1-4-1 Futakuchimachi	425-2277
	Horikawa Elementary School	All floors accessible	2F or higher	N/A	Less than 12 hours	1-13-10 Horikawa-Kozumimachi	424-1911
	Oizumi Junior High School	2F or higher	2F or higher	N/A	Less than 12 hours	1-11-35 Oizumi-Higashimachi	425-4433
Horikawa	Horikawa Junior High School	2F or higher	2F or higher	N/A	Less than 12 hours	1-21-35 Horikawa-Kozumimachi	424-3646
	Toyama High School	All floors accessible	2F or higher	N/A	Less than 12 hours	1 Taromaru	421-2925
	Toyama Izumi High School	2F or higher	2F or higher	N/A	Less than 12 hours	1-21-4 Horikawa-Kozumimachi	424-4274
Ninagawa	Horikawa Community Center	2F	2F	N/A	Less than 12 hours	425-1530	425-1530
	Horikawa Nursery School	2F	2F	N/A	N/A	1-16-24 Horikawa-Kozumimachi	421-9456
	Southern Elderly Citizens' Welfare Center	2F	2F	N/A	Less than 12 hours	88-1 Imaizumi	425-1715
Toyama	Toyama City General Welfare Center	2F or higher	2F or higher	N/A	Less than 12 hours	83-1 Imaizumi	422-3400
	Toyama City Nursing School	2F or higher	2F or higher	N/A	Less than 12 hours	308-1 Imaizumi	425-2555
	Horikawa Minami Elementary School	2F or higher	2F or higher	N/A	N/A	282-3 Hongomachi	423-1124
Horikawa Minami	National Institute of Technology Toyama College (NIT Toyama College)	2F	2F	N/A	N/A	113 Hongomachi	493-5402
	Horikawa Minami Community Center	2F	2F	N/A	Less than 12 hours	243-45 Hongomachi	492-3450
	Ninagawa Elementary School	2F or higher	2F or higher	N/A	Less than 12 hours	75-1 Akada	423-0179
Ninagawa	Toyama Minami High School	2F or higher	2F or higher	N/A	Less than 12 hours	98 Nunoiichi	429-1822
	Toyama City Disability Welfare Plaza	2F or higher	2F or higher	N/A	Less than 12 hours	15 Ninagawa	428-0113
	Toyama City Public Health Center	2F	2F	N/A	Less than 12 hours	459-1 Ninagawa	428-1155
Ninagawa	Ninagawa Community Center	2F	2F	N/A	Less than 12 hours	50 Akada	421-2971

Designated emergency evacuation shelters shown on this map (3/3)

School district	Name	Accessible floors		Risks at the maximum assumption		Address	Phone number (Area Code:076)
		Basic Assumption	Maximum Assumption	House collapse	Flooding duration		
Chuo	Shimizu Nursery School	All floors accessible	2F	N/A	N/A	10-17 Asahimachi	423-1630
	Tobu Elementary School	All floors accessible	2F	N/A	N/A	1-5-44 Ishigane	421-3445
	Tobu Junior High School	2F or higher	2F or higher	N/A	Less than 12 hours	4-4-60 Nagae-Shinmachi	421-5395
Tobu	Fujikoshi Technical High School	2F or higher	2F or higher	N/A	N/A	7-5 Higashi-Ishiganemachi	425-8304
	Toyama Prefectural University Toyama Campus	2F or higher	2F or higher	N/A	Less than 12 hours	2-2-78 Nishi-Nagae	464-5410
	Yamamuro Elementary School	2F or higher	2F or higher	N/A	N/A	2-10-5 Nakaichi	421-2802
Yamamuro	Yamamuro Junior High School	All floors accessible	2F or higher	N/A	N/A	30-1 Yamamuro	421-3362
	Yamamuro Community Center	All floors accessible	All floors accessible	N/A	N/A	2-8-76 Nakaichi	421-2801
	Yamamuro Childcare Center	1F	1F	N/A	N/A	5-3 Yamamuro	421-3362
Yamamuro Chubu	Yamamuro Childrevis Center	1F	1F	N/A	N/A	573-5 Takayashiki	492-1377
	Shimbo Elementary School	All floors accessible	2F or higher	N/A	Less than 12 hours	888-2 Tomi	429-1786
	Shimbo Community Center	2F	2F	N/A	Less than 12 hours	306-1 Shimbo	429-0001
Shimbo	Toyama Prefecture Sports Center	2F	2F	N/A	Less than 12 hours	183 Akigashima	429-5455
	Toyama City Physical Education and Culture Center	2F or higher	2F or higher	N/A	Less than 12 hours	1097 Tomosugi	429-5695
	Toyama Prefecture International Health Complex	All floors accessible	2F	N/A	Less than 12 hours	151 Tomosugi	428-0809
Kumano	Kumano Elementary School	2F or higher	2F or higher	N/A	Less than 12 hours	602 Miyanocho	429-1780
	Konan Junior High School	All floors accessible	2F or higher	N/A	Less than 12 hours	728 Shimino-Kumano	429-0174
	Ota Elementary School	2F or higher	2F or higher	N/A	Less than 12 hours	14-2 Ota	421-6619
Tsukioka	Agricultural Support Center	2F or higher	2F or higher	N/A	N/A	3-101 Tsukiokamachi	429-4504

Following rivers impact areas

Basic Assumption: Jogani River, Jinzu River, Kumano River, Dogawa River
 Maximum Assumption: Jogani River, Jinzu River, Kumano River, Itachi River, Dogawa River