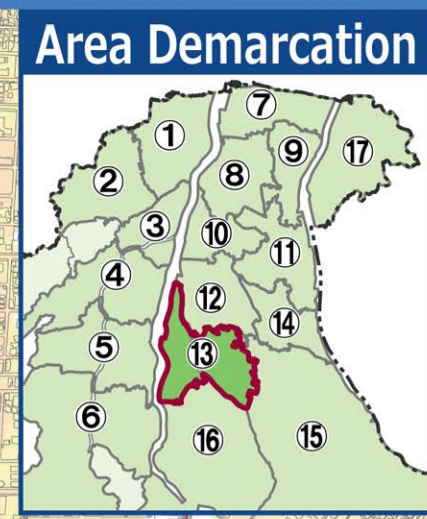


Toyama City Flood Hazard Map

Detailed Area Map 13 (Shimbo, Kumano)

1 Read this first.

- Evacuation from flooding. **Evacuation Information** The city will give you the information in accordance with each warning level.
- Evacuation Information for Alert Level 3 and 4** is issued by the city based on either the **basic assumption** (the left map) or the **maximum assumption** (the right map), depending on the rainfall forecast and other information.
- First, check the evacuation actions you should take under each scenario using the **Evacuation Action Flow Chart**.
- Next, check your evacuation routes and envision multiple evacuation sites beforehand, both inside and outside the school district, where you can safely evacuate.
- Make sure you understand **How to Operate the System** and get used to operating the system on a daily basis to prepare for any danger that may arise.



Basic Assumption

Assumed flooding caused by rainfall approximately once in every 30-150 years. The city will issue evacuation information for alert levels 3 or 4 based on the basic assumption.

Maximum Assumption

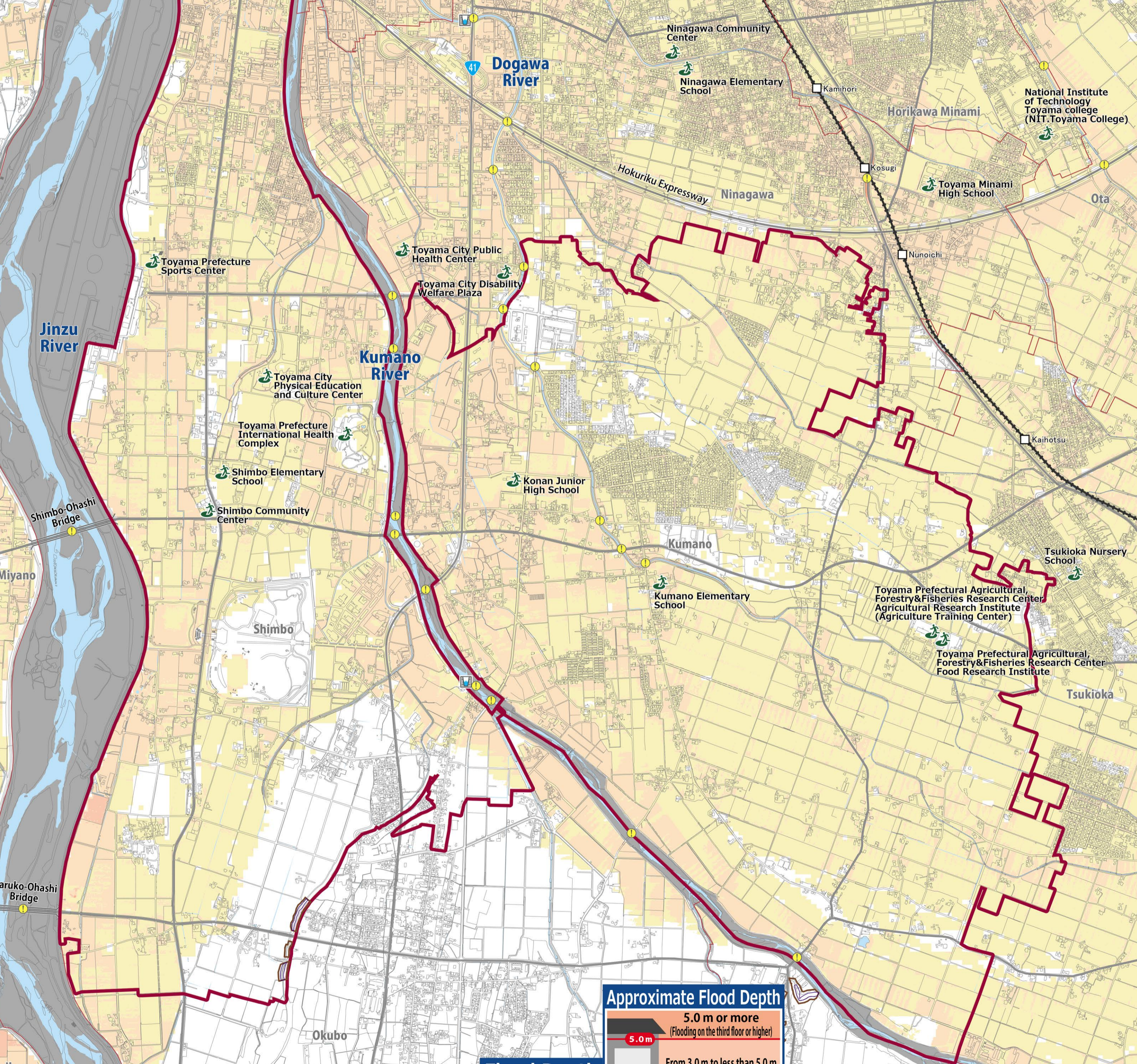
Assumption of inundation by the maximum possible rainfall, which is generally expected to occur once in every 1,000 years. The city will issue this order if it needs to prepare citizens for this assumption based on prior projections, etc.

Following rivers impact areas

Joganji River, Jinzu River, Kumano River, Dogawa River

Designated emergency evacuation shelters shown on this map

School district	Name	Accessible floors		Risks at the maximum assumption		Address	Phone number (Area Code: 076)
		All floors accessible	2F or higher	House collapse	Flooding duration		
Shimbo	Shimbo Elementary School	All floors accessible	2F or higher	N/A	Less than 12 hours	888-2 Tomi	429-1786
	Shimbo Community Center	2F	2F	N/A	Less than 12 hours	306-1 Shimbo	429-0001
	Toyama Prefecture Sports Center	2F	2F	N/A	Less than 12 hours	183 Akigashima	429-5455
	Toyama City Physical Education and Culture Center	2F or higher	2F or higher	N/A	Less than 12 hours	1097 Tomosugi	429-5695
	Toyama Prefecture International Health Complex	All floors accessible	2F	N/A	Less than 12 hours	151 Tomosugi	428-0809
Kumano	Kumano Elementary School	2F or higher	2F or higher	N/A	Less than 12 hours	602 Miyanocho	429-1780
	Konan Junior High School	All floors accessible	2F or higher	N/A	Less than 12 hours	728 Shimo-Kumano	429-0174
	Toyama Prefecture Agricultural, Forestry & Fisheries Research Center	2F	2F	N/A	N/A	1124-1 Yoshioka	429-2111
	Toyama Prefecture Agricultural, Forestry & Fisheries Research Institute	1F	1F	N/A	N/A	360 Yoshioka	429-5400
Koyo	Koyo Elementary School	2F or higher	2F or higher	N/A	Less than 12 hours	1-4 Futakuchimachi	425-2277
	National Institute of Technology Toyama college (NIT Toyama College)	2F	2F	N/A	N/A	13 Hongomachi	493-5402
	Ninagawa Elementary School	2F or higher	2F or higher	N/A	Less than 12 hours	75-1 Akada	423-0179
Ninagawa	Toyama Minami High School	2F or higher	2F or higher	N/A	Less than 12 hours	98 Nunochi	429-1822
	Toyama City Disability Welfare Plaza	2F or higher	2F or higher	N/A	Less than 12 hours	15 Ninagawa	428-0113
	Toyama City Public Health Center	2F	2F	N/A	Less than 12 hours	459-1 Ninagawa	428-1155
Tsukioka	Ninagawa Community Center	2F	2F	N/A	Less than 12 hours	50 Akada	421-2971
	Tsukioka Nursery School	1F	1F	N/A	N/A	4-41 Tsukimicho	429-4263
Okubo	Okubo Elementary School	All floors accessible	All floors accessible	N/A	N/A	2430 Shimo-Okubo	468-2653
	Okubo Fureai Center	All floors accessible	All floors accessible	N/A	N/A	1776-1 Shimo-Okubo	467-0001

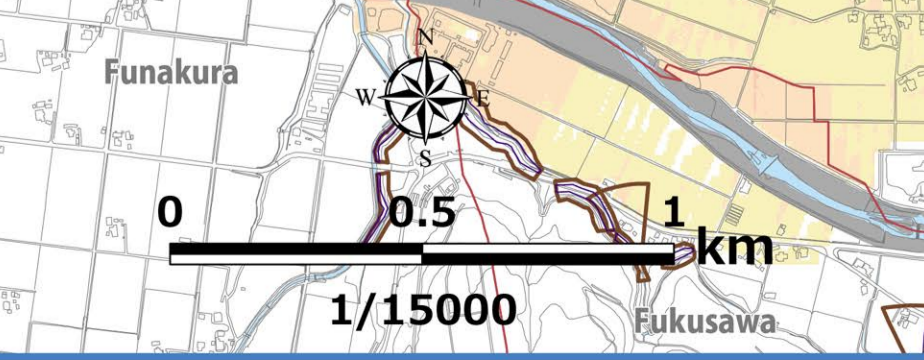
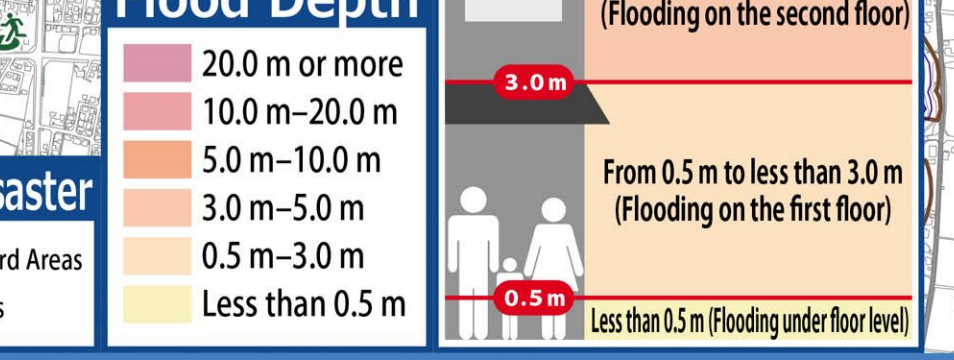


Explanatory Notes

Notation	Name
	Designated emergency shelter
	Bridge or underpass (caution when walking)
	Water level monitoring station
	School district border
	Scope of this map

Sediment Disaster

	Special Hazard Areas
	Hazard Areas



6 How to Obtain Information

You need information when you decide to evacuate. It is vital that you know what kind of information you need and how to get it. Collect information yourself in addition to alerts and information you receive.

Information that you will receive.

- Information on alert levels 3, 4, and 5, including evacuation orders; information on the possibility of flooding in the Jinzu and the Joganji Rivers.
 - Early warning mail
 - Disaster prevention information (radio)
 - Public relations vehicle
- Heavy rain warnings, flood warnings, and landslide warnings.
 - Toyama Prefectural Landslide Warning Email Service
- Weather warnings (including special warnings).
 - Yahoo! Bosai Sokuho (Disaster News Flash) (app)

These emails are automatically sent to you through phones within the city limits.

Information to be collected

- TV/Cable TV: Press the @ button to get the latest news on weather and evacuations!
 - NHK 1/2: 648kHz/1035kHz
 - KNB AM: 730kHz
 - NHK FM: 81.5MHz
 - KNB FM: 90.2MHz
 - FM Toyama: 82.7MHz
 - Toyama City FM: 77.7MHz
- Rainfall conditions around your house: Check only from indoors and stay away from the river.
- The Japan Meteorological Agency (JMA) website: Emergency Warning, Warning, Advisory, Tropical Cyclone Information Risk Map etc.
- Toyama City Disaster Prevention on Facebook: Information on emergency evacuations and support for daily life after disasters. @bousai.toyama
- Toyama City Disaster Prevention Web: Evacuation information, Evacuation shelter information, River water levels, Rainfall figures.
- Toyama City Website: Evacuation Preparations Support for daily life after disasters. @bousai_toyama
- Toyama City Disaster Prevention News on Twitter: Toyama City issues evacuation instructions and other emergency disaster prevention news. @bousai_toyama

Advance registration is required.

Radio always have a portable radio and open batteries ready!

Do not hesitate to evacuate to a designated emergency shelter or another safe place.

Please follow this evacuation procedure even if you evacuate according to the evacuation information for the basic assumption.

Evacuation (ground-level evacuation) | Evacuation (ground-level evacuation) | Evacuation (indoor safety/vertical evacuation) | Ensure indoor safety

Anyone with walking difficulties should prepare for Early Long-Distance Evacuation.

2 Evacuation Information.

(Evacuation actions according to Alert Level)

Alert Level 1

Early warning information

Increase your preparedness for the disaster. (Make an effort to gather information in case of an emergency.)

See How to Obtain Information

Alert Level 2

Heavy Rain Advisory Flood Advisory

Make sure you know how to evacuate. (Have you decided where to go and what routes to take?)

Evacuation Action Flow Chart

Alert Level 3

Evacuation of the elderly, etc.

If it will take considerable time to evacuate*2 from a dangerous place*1, start evacuation. Others should be prepared for evacuation.

Alert Level 4

Evacuation order

Please begin evacuation. At this point, everyone should be evacuated from the dangerous area*1.

Be sure to evacuate before Alert Level 4!

Alert Level 5

Emergency safety assurance

A disaster has occurred or is just about to occur. Secure your personal safety immediately.

*1 Those who are in a safe place need not evacuate to a designated emergency evacuation site. A safe place is the one that falls under all the following three categories.

- Areas unaffected by floodwaters or riverbank erosion
- Rooms in houses or facilities are higher than the level of flooding.
- Areas where the residents are able to survive with enough water and food till the floodwater recedes.

*2 Includes the elderly and people with disabilities, etc.

Disaster Emergency Message Dial (171)

Record: How to record messages. Dial 171 Press 1. Enter your phone number (including the area code). Record your message.

PLAY: How to play the recorded messages. Dial 171 Press 2. Enter your phone number (including the area code). Play the message for you.

3 Evacuation Action Flow Chart

Envision the evacuation actions you should take so you can evacuate quickly in an emergency.

(1) Which assumption based evacuation information should you use?

Start here: Your residence is in the colored areas*1 on the basic assumption (the left map) or the maximum assumption (the right map).

Check: Yes/No

If Yes: Evacuate if the maximum assumption-based evacuation information is issued. Even if the basic assumption-based evacuation information is issued for the basic assumption, stay alert, and try to collect information.

If No: Evacuate if the maximum assumption-based evacuation information is issued.

(2) What should I do?

Check: In case your residence falls under Areas that Require Early Evacuation? (Floodwaters, Riverbank erosion, Houses with a risk of flooding up to the top floor)

Yes: Evacuate to a designated emergency shelter or other safe places. Seek refuge to your residence's upper floors that are unaffected by flooding. Try to gather information and refrain from going out. Ensure indoor safety.

No: When seeking refuge outdoors is dangerous.

Evacuation (ground-level evacuation) | Evacuation (ground-level evacuation) | Evacuation (indoor safety/vertical evacuation) | Ensure indoor safety

Evacuation (ground-level evacuation) | Evacuation (ground-level evacuation) | Evacuation (indoor safety/vertical evacuation) | Ensure indoor safety

Anyone with walking difficulties should prepare for Early Long-Distance Evacuation.