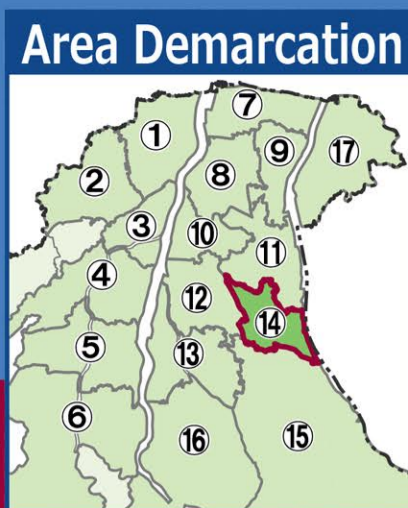


Toyama City Flood Hazard Map

Detailed Area Map 14 (Ota)



Designated emergency evacuation shelters shown on this map

School district	Name	Accessible floors		Risks at the maximum assumption		Address	Phone number (Area Code:076)
		Basic	Maximum	House collapse	Flooding duration		
Ota	Ota Elementary School	2F or higher	2F or higher	N/A	Less than 12 hours	14-2 Ota	421-6619
	Jikoen	2F	2F	N/A	Less than 12 hours	104-1 Nishinoban	492-9911
	Aiikuen	2F	2F	N/A	Less than 12 hours	104-1 Nishinoban	492-9912
Yamamuro	Yamamuro Elementary School	2F or higher	2F or higher	N/A	N/A	2-10-5 Nakaichi	421-2802
	Year 2000 Gymnasium	All floors accessible	All floors accessible	N/A	Less than 12 hours	1400 Tenshoji	420-2000
	Yamamuro Junior High School	All floors accessible	All floors accessible	N/A	N/A	2-8-76 Nakaichi	421-2801
Yamamuro Chubu	Yamamuro Childcare Center	1F	1F	N/A	N/A	5-3 Yamamuro	421-3362
	Yamamuro Chubu Elementary School	All floors accessible	All floors accessible	N/A	N/A	162-2 Yamamurogaya	423-1135
	Yamamuro Childrevis Center	1F	1F	N/A	N/A	573-5 Takayashiki	492-1377
Horikawa	Horikawa Minami Elementary School	All floors accessible	2F or higher	N/A	Less than 12 hours	217-20 Oomigahigashimachi	425-4433
	Horikawa Minami Community Center	2F	2F	N/A	N/A	13 Hongomachi	423-1124
	Horikawa Minami High School	2F or higher	2F or higher	N/A	Less than 12 hours	243-45 Hongomachi	492-3450
Ninagawa	Toyama Minami High School	2F or higher	2F or higher	N/A	Less than 12 hours	98 Nunoichi	429-1822
	Osho Elementary School	2F or higher	2F or higher	N/A	Less than 12 hours	453 Zenna	483-1151
	Tsukioka Elementary School	2F or higher	2F or higher	N/A	N/A	500 Kami-Senbomachi	429-0204
Tsukioka	Tsukioka Junior High School	2F or higher	2F or higher	N/A	Less than 12 hours	156 Naka-Nunome	429-0208
	Agricultural Support Center	2F	2F	N/A	N/A	3-101 Tsukiokamachi	429-504
	Tsukioka Community Center	All floors accessible	All floors accessible	N/A	N/A	509 Kami-Senbomachi	429-0201
Osho	Tsukioka Nursery School	1F	1F	N/A	N/A	4-41 Tsukimicho	429-4263
	Tsukioka kindergarten	1F	1F	N/A	N/A	508 Kami-Senbomachi	429-4959

Basic Assumption

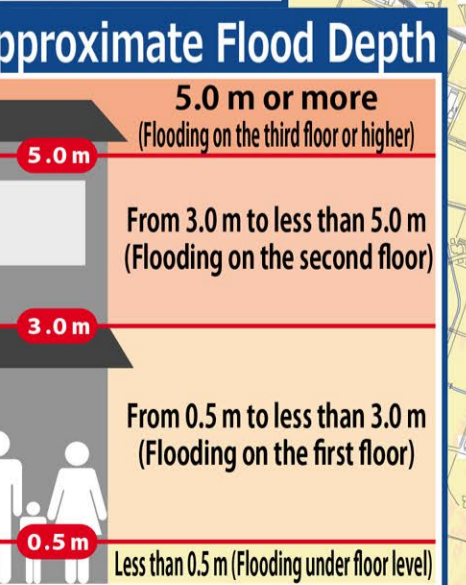
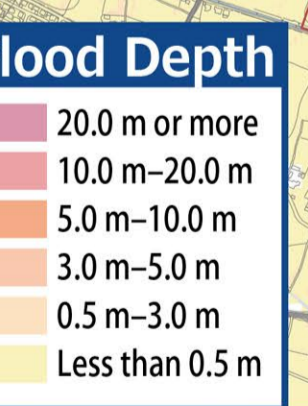
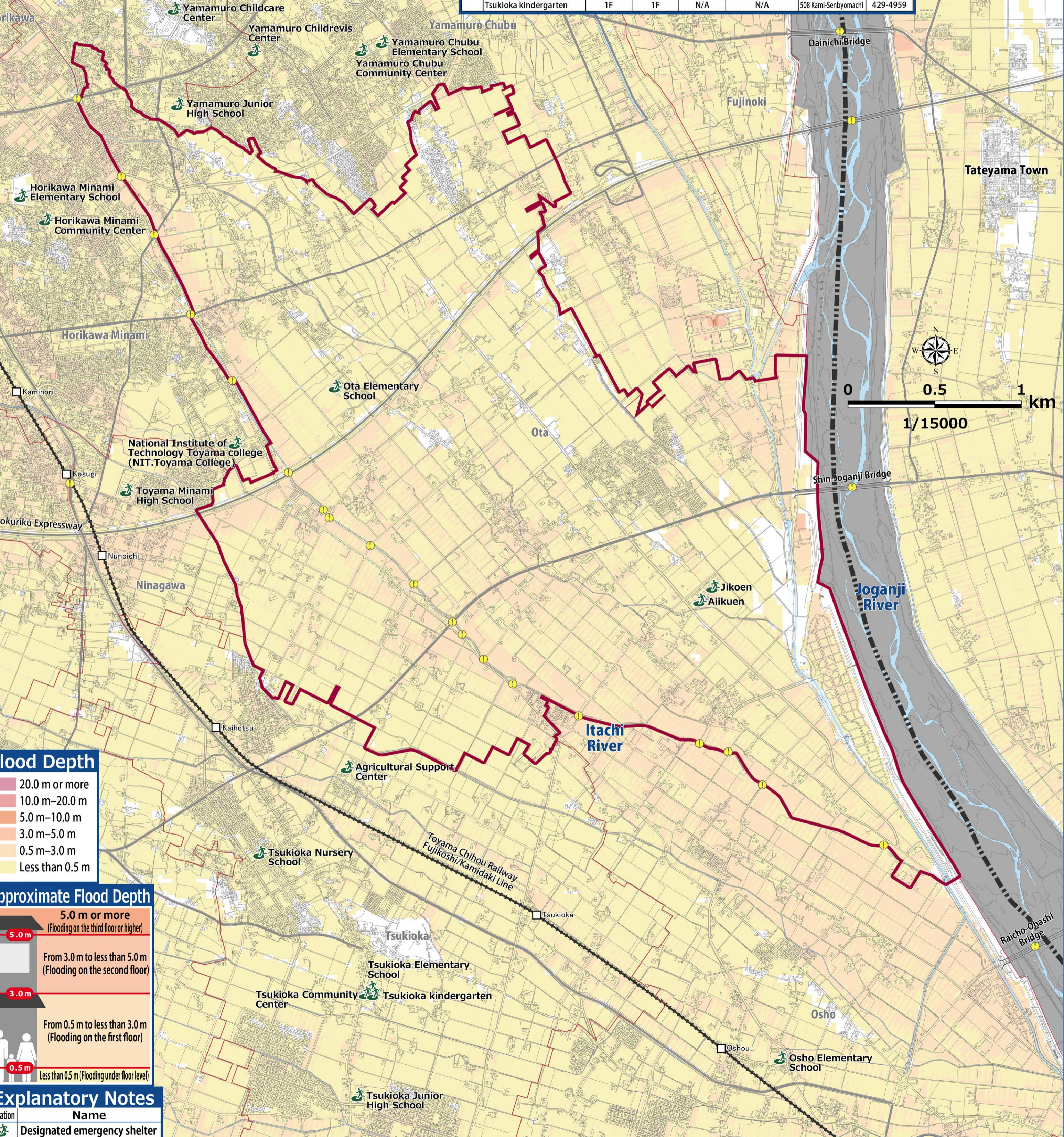
Assumed flooding caused by rainfall approximately once in every 30-150 years. The city will issue evacuation information for alert levels 3 or 4 based on the basic assumption.

Maximum Assumption

Assumption of inundation by the maximum possible rainfall, which is generally expected to occur once in every 1,000 years. The city will issue this order if it needs to prepare citizens for this assumption based on prior projections, etc.

1 Read this first.

- Evacuation from flooding.
- Evacuation Information: The city will give you the information in accordance with each warning level.
- Evacuation Information for Alert Level 3 and 4 is issued by the city based on either the basic assumption (the left map) or the maximum assumption (the right map), depending on the rainfall forecast and other information.
- First, check the evacuation actions you should take under each scenario using the Evacuation Action Flow Chart.
- Next, check your evacuation routes and envision multiple evacuation sites beforehand, both inside and outside the school district, where you can safely evacuate.
- Make sure you understand How to Obtain Information and get used to operating the system on a daily basis to prepare for any danger that may arise.



Explanatory Notes

	Designated emergency shelter
	Bridge or underpass (caution when walking)
	Water level monitoring station
	School district border
	Scope of this map

Following rivers impact areas
Basic Assumption Joganji River
Maximum Assumption Joganji River, Itachi River

2 Evacuation Information.

(Evacuation actions according to Alert Level)

Alert Level 1

Early warning information

Issue by the JMA

Increase your preparedness for the disaster. (Make an effort to gather information in case of an emergency.)

See How to Obtain Information

Alert Level 2

Heavy Rain Advisory Flood Advisory

Issue by the JMA

Make sure you know how to evacuate. (Have you decided where to go and what routes to take?)

See Evacuation Action Flow Chart

Alert Level 3

Based on the basic assumption or the maximum assumption (Issued by Toyama City)

Evacuation of the elderly, etc.

If it will take considerable time to evacuate*2 from a dangerous place*1, start evacuation. Others should be prepared for evacuation.

Alert Level 4

Based on the basic assumption or the maximum assumption (Issued by Toyama City)

Evacuation order

Please begin evacuation. At this point, everyone should be evacuated from the dangerous area*1.

Alert Level 5

Issue by Toyama City

Emergency safety assurance

(Issued to the extent possible)

A disaster has occurred or is just about to occur. Secure your personal safety immediately.

*1 Those who are in a safe place need not evacuate to a designated emergency evacuation site. A safe place is the one that falls under all the following three categories.
 1. Areas unaffected by floodwaters or riverbank erosion
 2. Rooms in houses or facilities are higher than the level of flooding.
 3. Areas where the residents are able to survive with enough water and food till the floodwater recedes.

*2 Includes the elderly and people with disabilities.

Disaster Emergency Message Dial (171)

Record How to record messages
 Dial 171 Press 1 Enter your phone number (including the area code)
 Record your message

PLAY How to play the recorded messages
 Dial 171 Press 2 Enter your phone number (including the area code)
 Play the message for you

6 How to Obtain Information

You need information when you decide to evacuate. It is vital that you know what kind of information you need and how to get it. Collect information yourself in addition to alerts and information you receive.

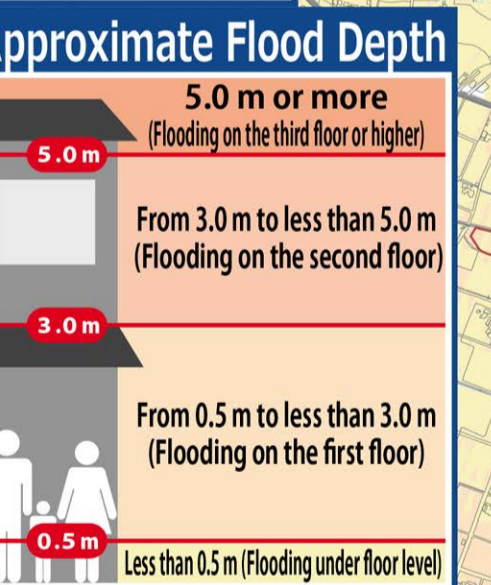
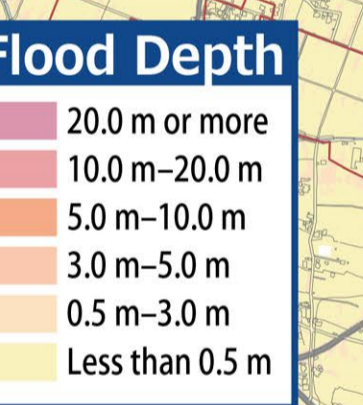
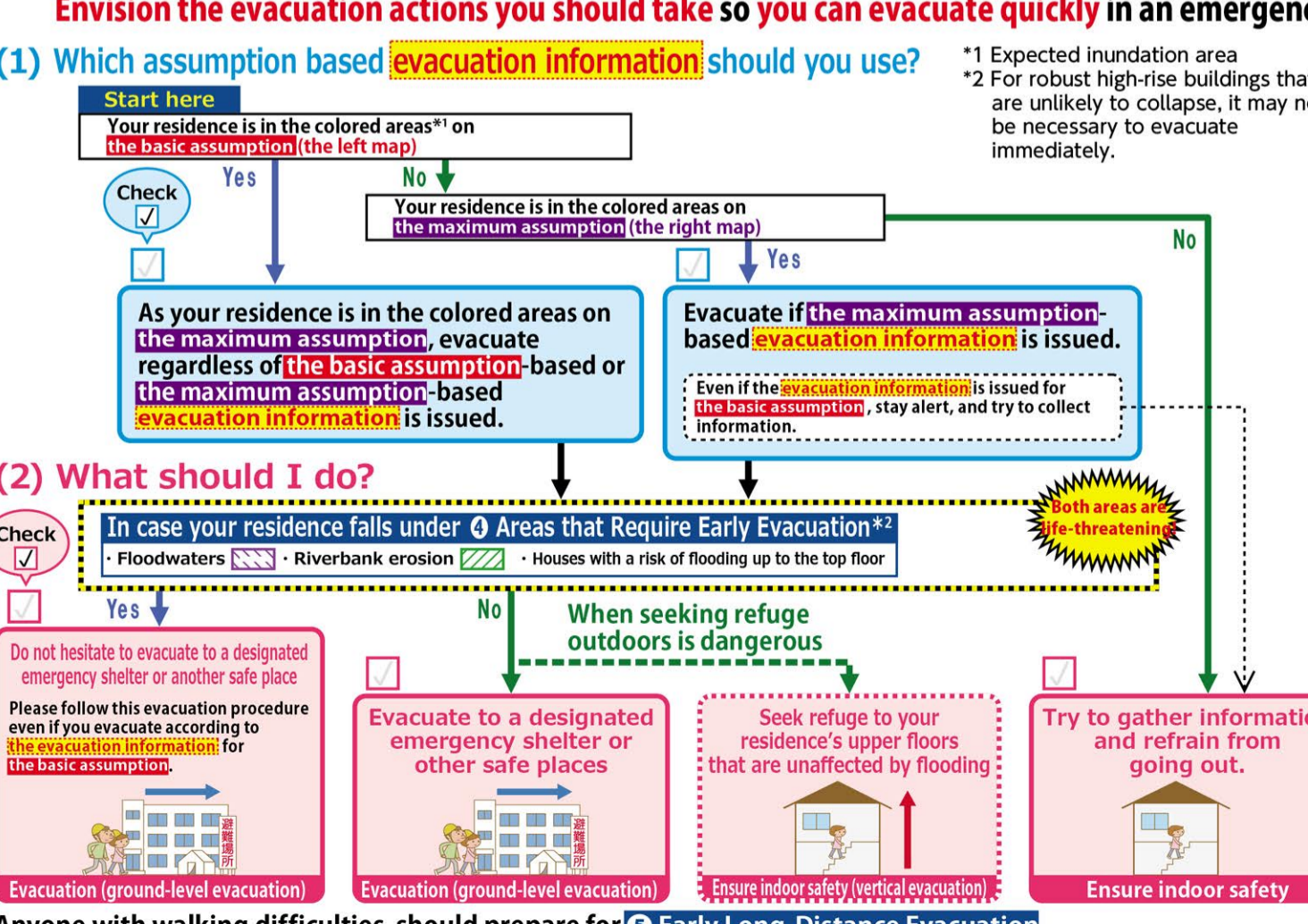
Information that you will receive.

- Information on alert levels 3, 4, and 5, including evacuation orders; information on the possibility of flooding in the Jinzu and the Joganji Rivers
- Heavy rain warnings, flood warnings, and landslide warnings
- Weather warnings (including special warnings)

Information to be collect

- TV/Cable TV: Press the @ button to get the latest news on weather and evacuations!
- Radio: Always have a portable radio and open batteries ready!
- Smartphone: Use the @ button to get the latest news on weather and evacuations!
- QR codes: Receive relevant information immediately via email.
- Advance registration is required.

7 Evacuation Action Flow Chart



6 How to Obtain Information

You need information when you decide to evacuate. It is vital that you know what kind of information you need and how to get it. Collect information yourself in addition to alerts and information you receive.

Information that you will receive.

- Information on alert levels 3, 4, and 5, including evacuation orders; information on the possibility of flooding in the Jinzu and the Joganji Rivers
- Heavy rain warnings, flood warnings, and landslide warnings
- Weather warnings (including special warnings)

Information to be collect

- TV/Cable TV: Press the @ button to get the latest news on weather and evacuations!
- Radio: Always have a portable radio and open batteries ready!
- Smartphone: Use the @ button to get the latest news on weather and evacuations!
- QR codes: Receive relevant information immediately via email.
- Advance registration is required.

7 Evacuation Action Flow Chart

