

Toyama City Flood Hazard Map

Detailed Area Map ⑮

(Kamidaki, Fukusawa, Osho, Tsukioka)

Following rivers impact areas

- Basic Assumption** Joganji River, Kumano River
- Maximum Assumption** Joganji River, Kumano River, Itachi River

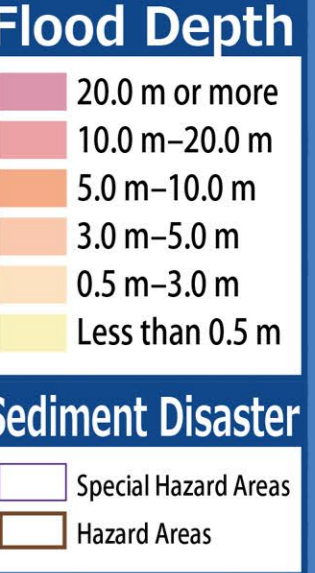
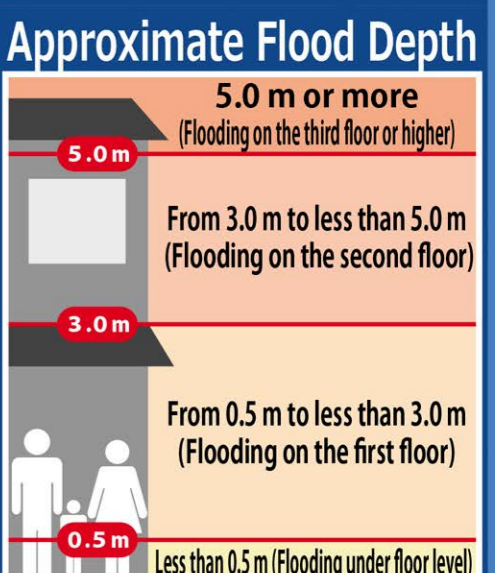
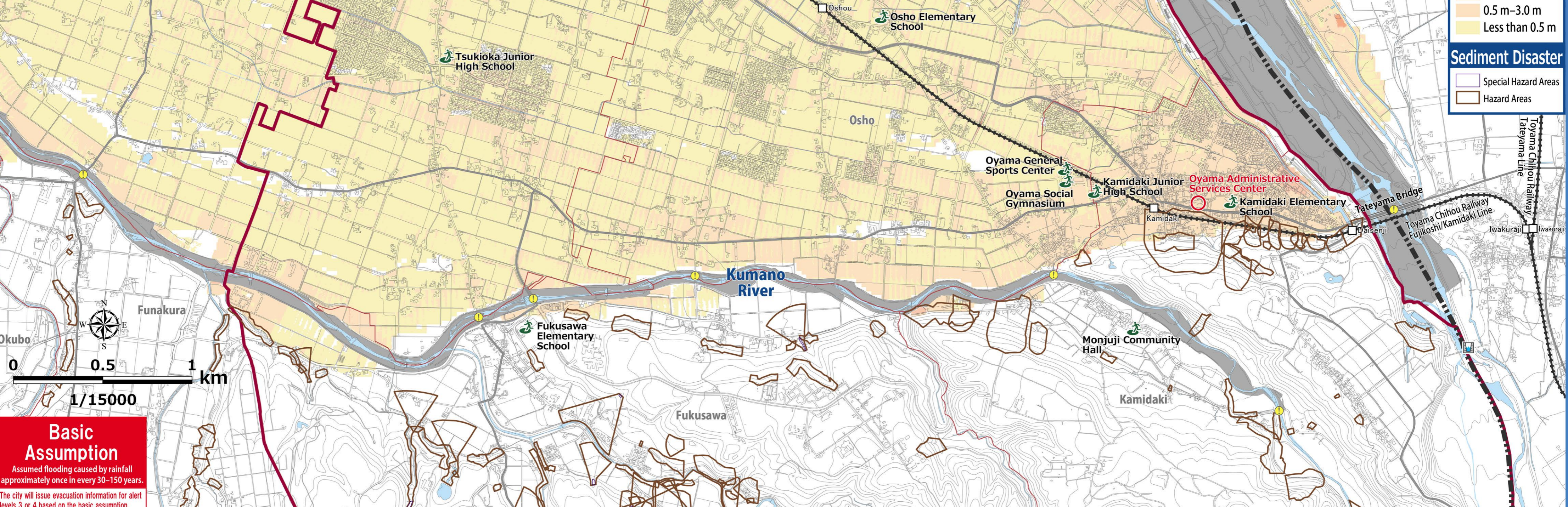
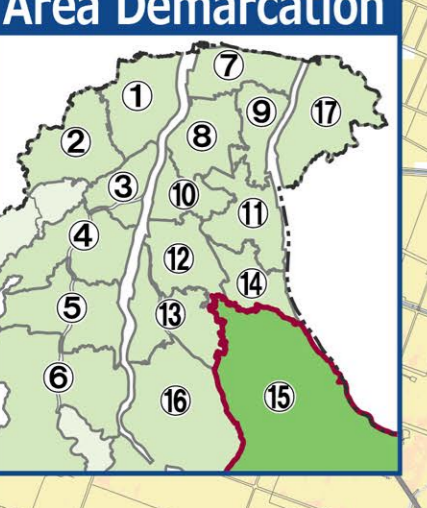
Explanatory Notes

Notation	Name
	Designated emergency shelter
	Bridge or underpass (caution when walking)
	Water level monitoring station
	School district border
	Scope of this map

Designated emergency evacuation shelters shown on this map

School district	Name	Accessible floors		Risks at the maximum assumption		Address	Phone number (Area Code:076)
		Basic	Maximum	House collapse	Flooding duration		
Kamidaki	Kamidaki Elementary School	2F or higher	3F	N/A	Less than 12 hours	517 Kamidaki	483-1726
	Kamidaki Junior High School	2F or higher	2F or higher	N/A	Less than 12 hours	160 Nakadaki	483-1521
	Monjuji Community Hall	All floors accessible	All floors accessible	N/A	N/A	1300-4 Monjuji	483-1633
Fukasawa	Fukasawa Elementary School	All floors accessible	All floors accessible	N/A	N/A	46-4 Higashi-Fukasawa	483-1857
	Osho Elementary School	2F or higher	2F or higher	N/A	Less than 12 hours	453 Zenna	483-1151
Osho	Oyama Social Gymnasium	All floors accessible	All floors accessible	N/A	Less than 12 hours	378 Hanasaki	483-0059
	Oyama General Sports Center	2F	2F	N/A	Less than 12 hours	386 Hanasaki	483-0059
Tsukioka	Tsukioka Elementary School	2F or higher	2F or higher	N/A	N/A	500 Kami-Senbomachi	429-0204
	Tsukioka Junior High School	2F or higher	2F or higher	N/A	Less than 12 hours	156 Naka-Nunome	429-0208
Kumano	Agricultural Support Center	2F	2F	N/A	N/A	3-101 Tsukiokamachi	429-4504
	Tsukioka Community Center	All floors accessible	All floors accessible	N/A	N/A	509 Kami-Senbomachi	429-0201
Ota	Tsukioka Nursery School	1F	1F	N/A	N/A	4-41 Tsukimicho	429-4263
	Tsukioka Kindergarten	1F	1F	N/A	N/A	508 Kami-Senbomachi	429-4959
Jiko	Jiko	2F	2F	N/A	Less than 12 hours	104-1 Nishinobu	492-9911
	Aiikuen	2F	2F	N/A	Less than 12 hours	104-1 Nishinobu	492-9912
Kumano	Toyama Prefectural Agricultural Forestry Fisheries Research Center Agricultural Research Institute (Agriculture Training Center)	2F	2F	N/A	N/A	1124-1 Yoshioka	429-2111
	Toyama Prefectural Agricultural Forestry Fisheries Research Center Food Research Institute	1F	1F	N/A	N/A	360 Yoshioka	429-5400

- ### 1 Read this first.
- Evacuation from flooding. Evacuation information The city will give you the information in accordance with each warning level.
 - Evacuation information for Alert Level 3 and 4 is issued by the city based on either the basic assumption (the top map) or the maximum assumption (the bottom map), depending on the rainfall forecast and other information.
 - First, check the evacuation actions you should take under each scenario using the Evacuation Action Flow Chart.
 - Next, check your evacuation routes and envision multiple evacuation sites beforehand, both inside and outside the school district, where you can safely evacuate.
 - Make sure you understand How to Obtain Information and get used to operating the system on a daily basis to prepare for any danger that may arise.



Basic Assumption

Assumed flooding caused by rainfall approximately once in every 30-150 years. The city will issue evacuation information for alert levels 3 or 4 based on the basic assumption.

Maximum Assumption

Assumption of inundation by the maximum possible rainfall, which is generally expected to occur once in every 1,000 years. The city will issue this order if it needs to prepare citizens for this assumption based on prior projections, etc.

- ### 4 Areas requiring early evacuation, etc.
- It could become highly life-threatening, so please seek refuge outdoors as soon as possible.
- Floodwaters**: Areas where wooden houses are likely to be swept away or destroyed by violent floodwaters from rivers.
 - Riverbank erosion**: Areas where houses may be washed away or collapse due to the ground being eroded by floodwaters.
 - Houses with a risk of being flooded up to the top floor**: Single-story buildings: Floodwaters from 0.5 m-less than 3.0 m. Two-story buildings: Floodwaters from 3.0m or higher.
- *-Projected floodwater areas, including potential house collapse*-are only in case of maximum assumption.

- ### 5 Early Long-Distance Evacuation
- In principle, evacuation should be on foot. However, if it is difficult to evacuate on foot, consider evacuation by car as soon as possible to an area that is thought to be unaffected by flooding (no coloring).
- [Persons recommended for early long-distance evacuation]
- Those with limited mobility
 - Those who live far from an emergency shelter
- [Emergency shelters in areas thought to be unaffected by flooding]
- At the latest, there shelters will open as soon as the alert level 3 information is issued, so check for news in the early warning mail and other sources before evacuating.
- Keep in mind the following points when evacuating by car!
- Avoid flooded roads.
 - Give priority to emergency vehicles and pull over when leaving your car unattended.
 - Also check for supplementary information in the Guidelines Brochure.

- ### 6 How to Obtain Information
- You need information when you decide to evacuate. It is vital that you know what kind of information you need and how to get it. Collect information yourself in addition to alerts and information you receive.

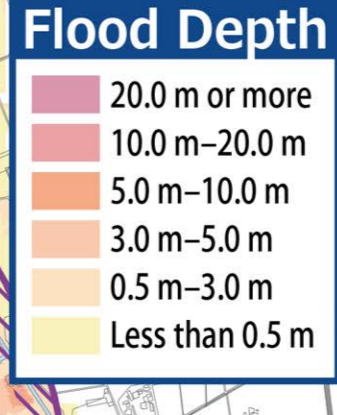
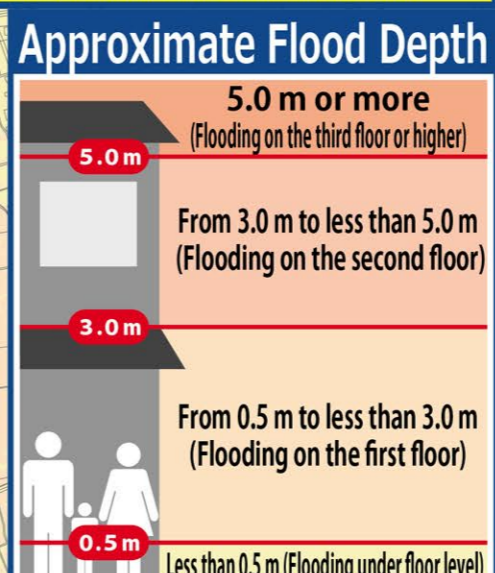
Information that you will receive.

Information on alert levels 3, 4, and 5, including evacuation orders; information on the possibility of flooding in the Jinzu and the Joganji Rivers

- Early warning mail**: These emails are automatically sent to you through phones within the city limits.
- Heavy rain warnings, flood warnings, and landslide warnings**: (including special warnings) Toyama Prefectural Landslide Warning Email Service
- Weather warnings**: (including special warnings) Yahoo! Boss! Sokeho [Disaster News Flash] (app)
- Disaster prevention administrative radio system**: Receive relevant information immediately via email.
- Public relations vehicle**: See [Infomap Toyama] for locations of emergency broadcast system sites.
- Advance registration is required.**

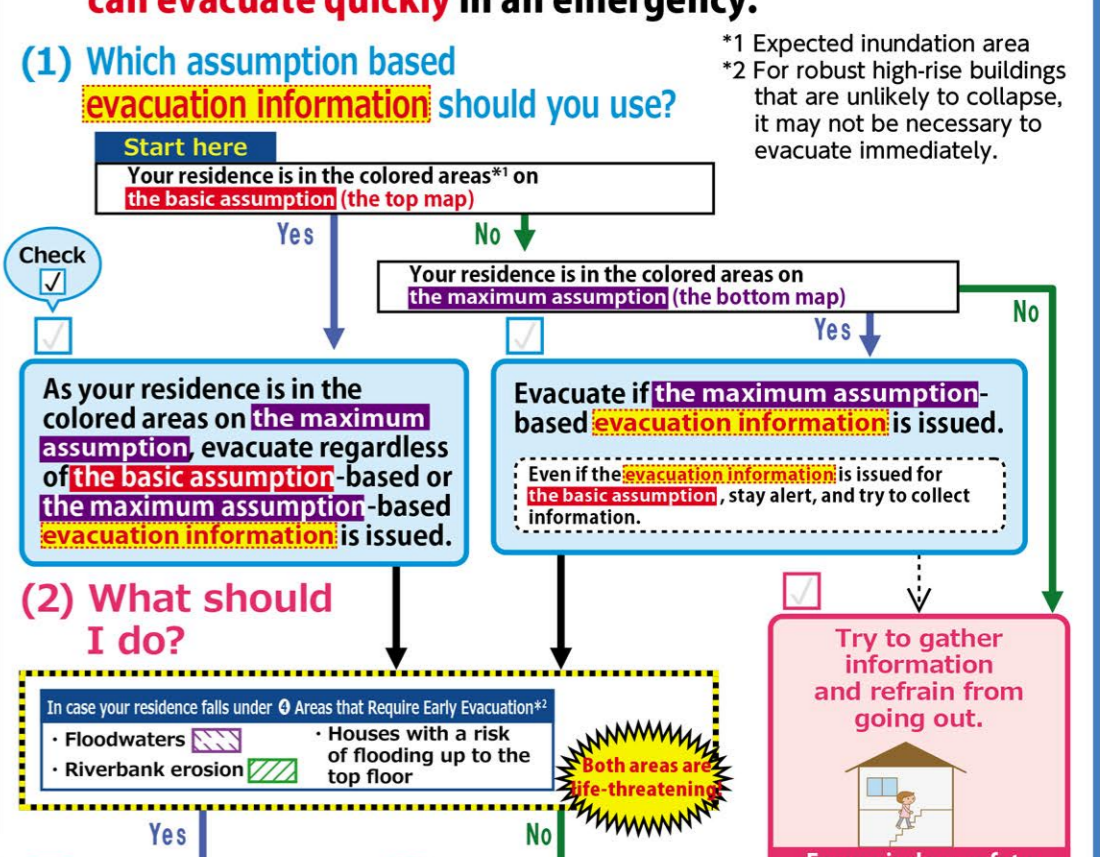
Information to be collect

- TV/Cable TV**: Press the (d) button to get the latest news on weather and evacuations!
- Rainfall conditions around your house**: Check only from indoors and stay away from the river.
- Toyama Disaster Prevention Web**: Evacuation information, shelter information, River water levels, Rainfall figures.
- The Japan Meteorological Agency (JMA) website**: Emergency Warning, Warning, Advisory, Tropical Cyclone Information, Risk Map etc.
- Toyama City Disaster Prevention News on Facebook**
- Toyama City Disaster Prevention News on Twitter**
- Toyama City Website**: Evacuation Preparations, Support for daily life after disasters.
- @bousai.toyama**: Information on emergency evacuations and support for daily life after disasters.
- @bousai_toyama**: Toyama City issues evacuation instructions and other emergency disaster prevention news.



7 Evacuation Action Flow Chart

Check what you should do to evacuate!



Disaster Emergency Message Dial (171)

Record

How to record messages: Dial 171 Press 1 Enter your phone number (including the area code) Record your message

PLAY

How to play the recorded messages: Dial 171 Press 2 Enter your phone number (including the area code) Play the message for you

Alert Level 1

[Issued by the JMA] Early warning information

Increase your preparedness for the disaster. (Make an effort to gather information in case of an emergency.) See How to Obtain Information

Alert Level 2

[Issued by the JMA] Heavy Rain Advisory Flood Advisory

Make sure you know how to evacuate. (Have you decided where to go and what routes to take?) Evacuation Action Flow Chart

Alert Level 3

Based on the basic assumption or the maximum assumption [Issued by Toyama City] Evacuation of the elderly, etc.

If it will take considerable time to evacuate** from a dangerous place**1, start evacuation. Others should be prepared for evacuation.

Alert Level 4

Based on the basic assumption or the maximum assumption [Issued by Toyama City] Evacuation order

Please begin evacuation. At this point, everyone should be evacuated from the dangerous area**1.

Alert Level 5

<Issued by Toyama City> Emergency safety assurance (Issued to the extent possible)

A disaster has occurred or is just about to occur. Secure your personal safety immediately.

*1 Those who are in a safe place need not evacuate to a designated emergency evacuation site. A safe place is the one that falls under all the following three categories: 1. Areas unaffected by floodwaters, 2. Areas where the residents are able to survive with enough water and food till the floodwater recedes. Check the flooding duration here.

**2 Includes the elderly and people with disabilities, etc.

1 Expected inundation area 2 For robust high-rise buildings that are unlikely to collapse, it may not be necessary to evacuate immediately.

Date issued: June 2020 (revision: September 2021) For inquiries, contact: River Improvement Div., Public Works Construction Dept., Toyama City (076-445-3221)

Background map: 2018 Toyama City Topographic Map 1/2500 / 測量法に基づく国土院院長承認 (使用) 01H19-942