

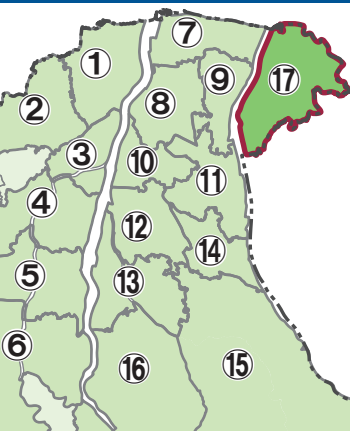
Toyama City Flood Hazard Map

Detailed Area Map 17
(Mizuhashi Chubu, Mizuhashi Seibu, Mizuhashi Tobu, Sango, Jojo)

1 Read this first.

- Evacuation from flooding.
- Evacuation Information:** The city will give you the information in accordance with each warning level.
- Evacuation Information for Alert Level 1 and 2:** If it is issued by the city based on either the **basic assumption** (the left map) or the **maximum assumption** (the right map), depending on the rainfall forecast and other information.
- First, check the evacuation actions you should take under each scenario using the **Evacuation Action Flow Chart**.
- Next, check your evacuation routes and envision multiple evacuation sites beforehand, both inside and outside the school district, where you can safely evacuate.
- Make sure you understand **How to Obtain Information** and get used to operating the system on a daily basis to prepare for any danger that may arise.

Area Demarcation



Following rivers impact areas

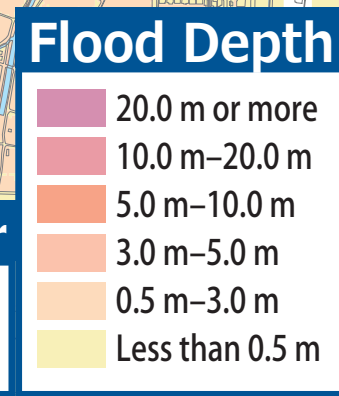
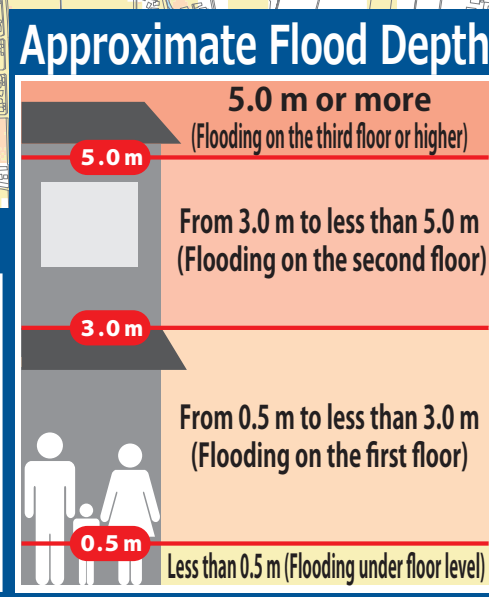
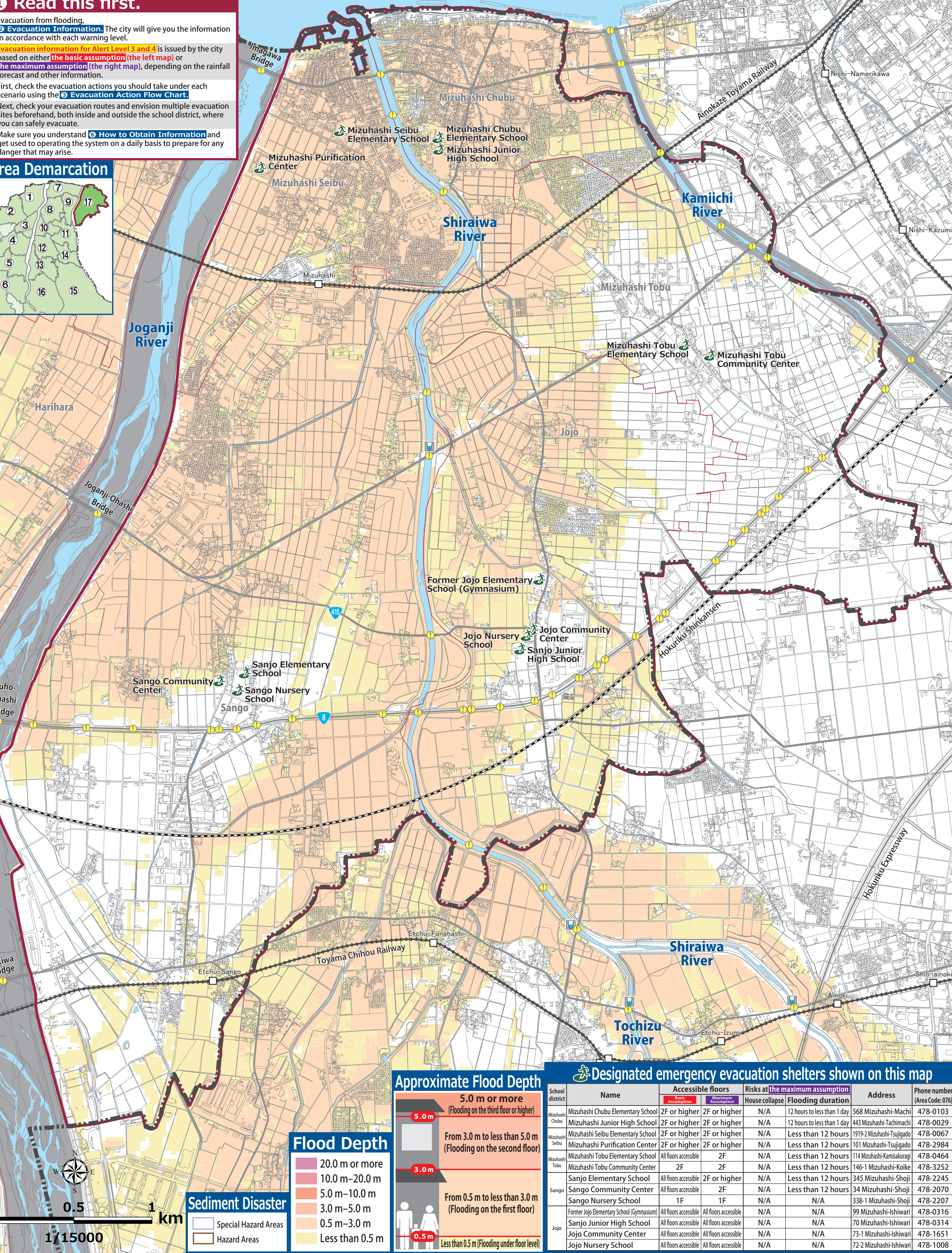
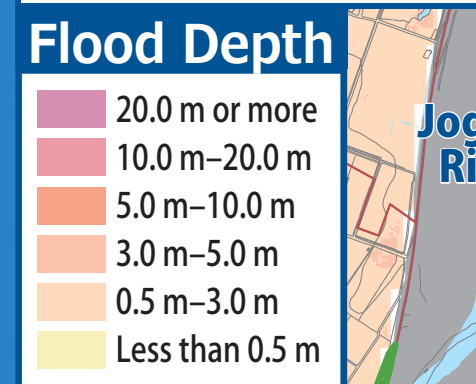
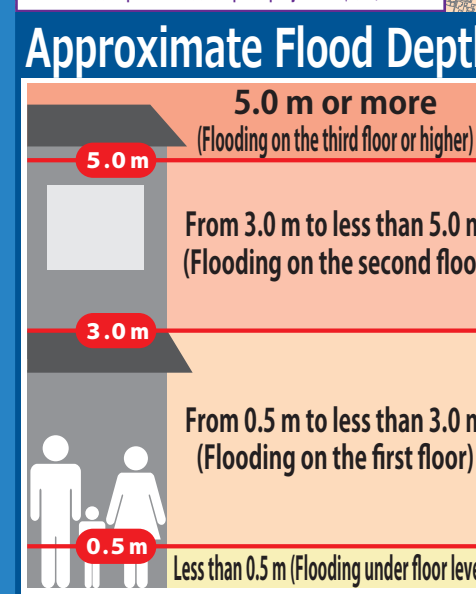
Basic Assumption
Joganji River, Kamiichi River, Shiraiwa River, Tochizu River

Maximum Assumption
Joganji River, Kamiichi River, Shiraiwa River, Oiwa River, Tochizu River

Notation	Name
	Designated emergency shelter
	Bridge or underpass (caution when walking)
	Water level monitoring station
	School district border
	Scope of this map

Basic Assumption
Assumed flooding caused by rainfall approximately once in every 30-150 years.
The city will issue evacuation information for alert levels 3 or 4 based on the basic assumption.

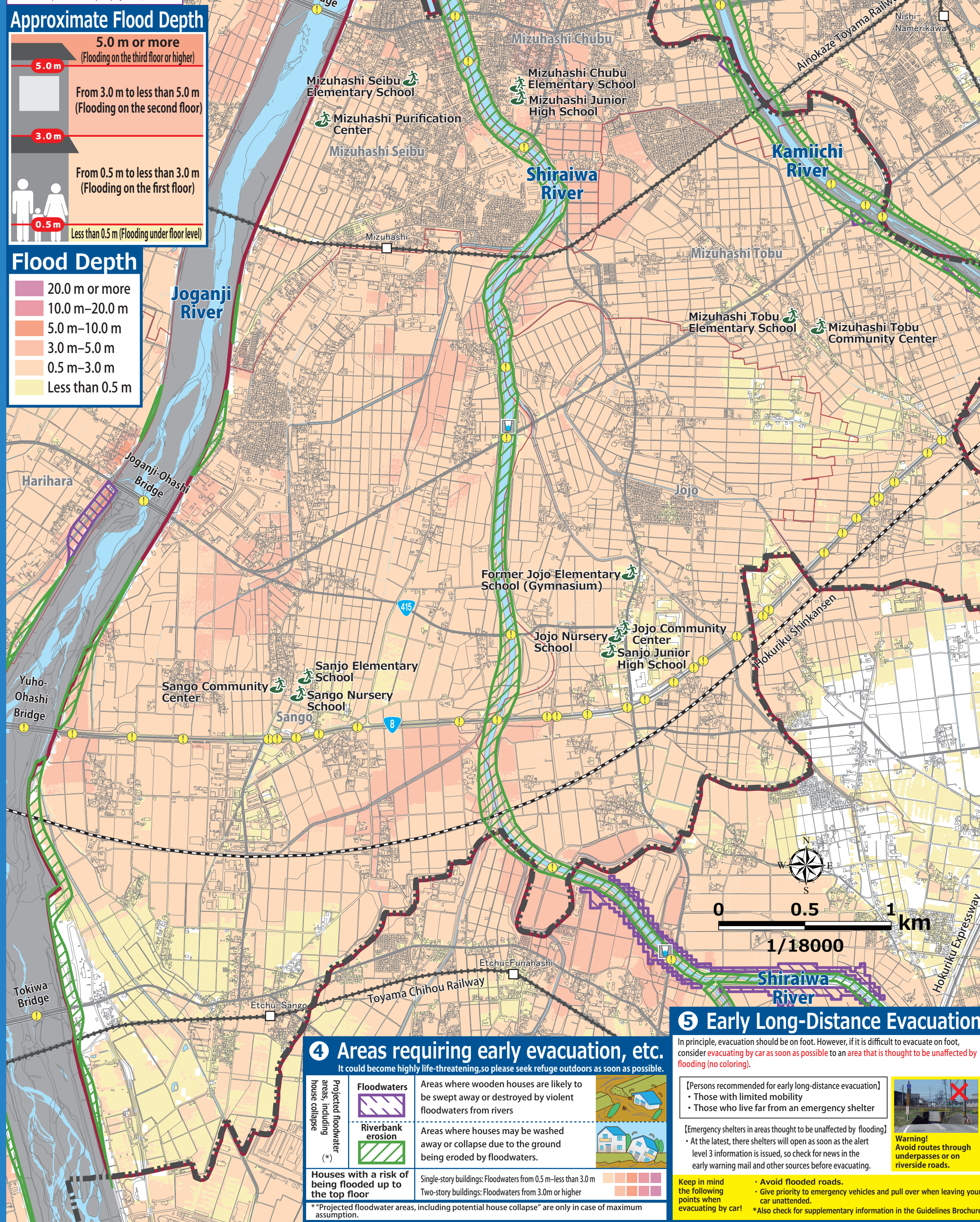
Maximum Assumption
Assumption of inundation by the maximum possible rainfall, which is generally expected to occur once in every 1,000 years.
The city will issue this order if it needs to prepare citizens for this assumption based on prior projections, etc.



Sediment Disaster

- Special Hazard Areas
- Hazard Areas

Designated emergency evacuation shelters shown on this map						
School district	Name	Accessible floors	Risks at the maximum assumption	Address	Phone number (Area Code: 076)	
Mizuhashi Chubu	Mizuhashi Chubu Elementary School	2F or higher	2F or higher	568 Mizuhashi-Machi	478-0103	
	Mizuhashi Junior High School	2F or higher	2F or higher	443 Mizuhashi-Tachinami	478-0029	
	Mizuhashi Seibu Elementary School	2F or higher	2F or higher	493 Mizuhashi-Tsujigado	478-0067	
	Mizuhashi Purification Center	2F or higher	2F or higher	101 Mizuhashi-Tsujigado	478-2984	
Mizuhashi Seibu	Mizuhashi Tobu Elementary School	All floors accessible	2F	114 Mizuhashi-Kamikura	478-0464	
	Mizuhashi Tobu Community Center	2F	2F	146-1 Mizuhashi-Koike	478-3252	
	Sango Elementary School	All floors accessible	2F or higher	345 Mizuhashi-Shoji	478-2245	
	Sango Community Center	All floors accessible	2F	34 Mizuhashi-Shoji	478-2070	
Mizuhashi Tobu	Sango Nursery School	1F	1F	338-1 Mizuhashi-Shoji	478-2207	
	Former Jojo Elementary School (Gymnasium)	All floors accessible	All floors accessible	99 Mizuhashi-Ishiwari	478-0316	
	Sanjo Junior High School	All floors accessible	All floors accessible	70 Mizuhashi-Ishiwari	478-0314	
	Jojo Community Center	All floors accessible	All floors accessible	73-1 Mizuhashi-Ishiwari	478-1651	
Sango	Jojo Nursery School	All floors accessible	All floors accessible	72-2 Mizuhashi-Ishiwari	478-1008	
	Jojo Nursery School	All floors accessible	All floors accessible			



6 How to Obtain Information

You need information when you decide to evacuate. It is vital that you know **what kind of information you need and how to get it**. Collect information yourself in addition to alerts and information you receive.

Information that you will receive.

Information on alert levels 3, 4, and 5, including evacuation orders; information on the possibility of flooding in the Jinzu and the Joganji Rivers

Early warning mail

Disaster prevention information via voice mail

Public relations vehicle

Heavy rain warnings, flood warnings, and landslide warnings

Weather warnings (including special warnings)

Yahoo! Bosai Sokuho (Disaster News Flash) (app)

These emails are automatically sent to you through phones within the city limits.

See "Infomap Toyama" for locations of emergency broadcast system sites.

Receive relevant information immediately via email.

Advance registration is required.

Information to be collect

TV/Cable TV

Press the **@ button** to get the latest news on weather and evacuations!

Radio Always have a portable radio and open batteries ready!

NHK 1/2 648kHz/103.5kHz

NHK AM 81.5MHz

NHK FM 82.7MHz

FM Toyama 77.7MHz

Rainfall conditions around your house

Check only from indoors and stay away from the river.

The Japan Meteorological Agency (JMA) website

Emergency Warning, Warning, Advisory, Tropical Cyclone Information Risk Map etc.

Toyama City Disaster Prevention on Facebook

Information on emergency evacuations and support for daily life after disasters

@bousai.toyama

Toyama City issues evacuation instructions and other emergency disaster prevention news.

Toyama City Disaster Prevention News on Twitter

@bousai_toyama

Date issued: June 2020 (revision: August 2022)

Background map: 2018 Toyama City Topographic Map 1/2500 / 測量法に基づく国土院院長承認 (使用) R1.Hs942

For inquiries, contact: River Improvement 3rd, Public Works/Construction Dept., Toyama City 974-445-2211

2 Evacuation Information. (Evacuation actions according to Alert Level)

Alert Level 1 [Issued by the JMA] **Early warning information**

Increase your preparedness for the disaster. (Make an effort to **gather information** in case of an emergency.)

See **How to Obtain Information**

Alert Level 2 [Issued by the JMA] **Heavy Rain Advisory Flood Advisory**

Make sure you know how to evacuate. (Have you decided where to go and what routes to take?)

See **Evacuation Action Flow Chart** Check

Alert Level 3 Based on the **basic assumption** or the **maximum assumption** (Issued by Toyama City) **Evacuation of the elderly, etc.**

If it will take considerable time to evacuate*2 from a dangerous place*1, **start evacuation**. Others should be prepared for evacuation.

Alert Level 4 Based on the **basic assumption** or the **maximum assumption** (Issued by Toyama City) **Evacuation order**

Please **begin evacuation**. At this point, **everyone** should be evacuated from the dangerous area*1.

Alert Level 5 [Issued by Toyama City] **Emergency safety assurance** (Issued to the extent possible)

A disaster has occurred or is just about to occur. **Secure your personal safety immediately.**

*1 Those who are in a safe place need not evacuate to a designated emergency evacuation site. A safe place is the one that falls under the following three categories.
1. Areas unaffected by floodwaters or riverbank erosion
2. Rooms in houses or facilities are higher than the level of flooding.
3. Areas where the residents are able to survive with enough water and food till the floodwater recedes.

*2 Includes the elderly and people with disabilities, etc.

Disaster Emergency Message Dial (171)

Record How to record messages
Dial 171
Press 1
Enter your phone number (including the area code)
Record your message

PLAY How to play the recorded messages
Dial 171
Press 2
Enter your phone number (including the area code)
Play the message for you

6 Early Long-Distance Evacuation

In principle, evacuation should be on foot. However, if it is difficult to evacuate on foot, consider evacuating by car as soon as possible to an area that is thought to be unaffected by flooding (no coloring).

4 Areas requiring early evacuation, etc.
It could become highly life-threatening so please seek refuge outdoors as soon as possible.

Floodwaters Areas where wooden houses are likely to be swept away or destroyed by violent floodwaters from rivers

Riverbank erosion Areas where houses may be washed away or collapse due to the ground being eroded by floodwaters.

Houses with a risk of being flooded up to the top floor Single-story buildings: Floodwaters from 0.5 m-less than 3.0 m
Two-story buildings: Floodwaters from 3.0m or higher

Persons recommended for early long-distance evacuation
• Those with limited mobility
• Those who live far from an emergency shelter

[Emergency shelters in areas thought to be unaffected by flooding]
• At the latest, these shelters will open as soon as the alert level 3 information is issued, so check for news in the early warning mail and other sources before evacuating.

Keep in mind the following points when evacuating by car!
• Avoid flooded roads.
• Give priority to emergency vehicles and pull over when leaving your car unattended.
• Also check for supplementary information in the Guidelines Brochure.

Warning! Avoid routes through underpasses or on overpasses.

6 Evacuation Action Flow Chart

Envision the evacuation actions you should take so you can evacuate quickly in an emergency.

(1) Which assumption based evacuation information should you use?

Start here
Your residence is in the colored areas*1 on the **basic assumption** (the left map)
Yes
No
Your residence is in the colored areas on the **maximum assumption** (the right map)
Yes
No

As your residence is in the colored areas on the maximum assumption, evacuate regardless of the basic assumption-based or the maximum assumption-based evacuation information is issued.

Evacuate if the maximum assumption-based evacuation information is issued.
Even if the evacuation information is issued for **basic assumption**, stay alert, and try to collect information.

(2) What should I do?

In case your residence falls under ④ Areas that Require Early Evacuation?
Floodwaters Riverbank erosion Houses with a risk of flooding up to the top floor
Yes
No
When seeking refuge outdoors is dangerous

Do not hesitate to evacuate to a designated emergency shelter or another safe place.

Evacuate to a designated emergency shelter or other safe place

Seek refuge to your residence's upper floors or that are unaffected by flooding

Try to gather information and refrain from going out.

Evacuation (ground-level evacuation)

Evacuation (ground-level evacuation)

Evacuation (indoor safety/vertical evacuation)

Ensure indoor safety

Anyone with walking difficulties should prepare for **Early Long-Distance Evacuation**.

*1 Expected inundation area
*2 For robust high-rise buildings that are unlikely to collapse, it may not be necessary to evacuate immediately.