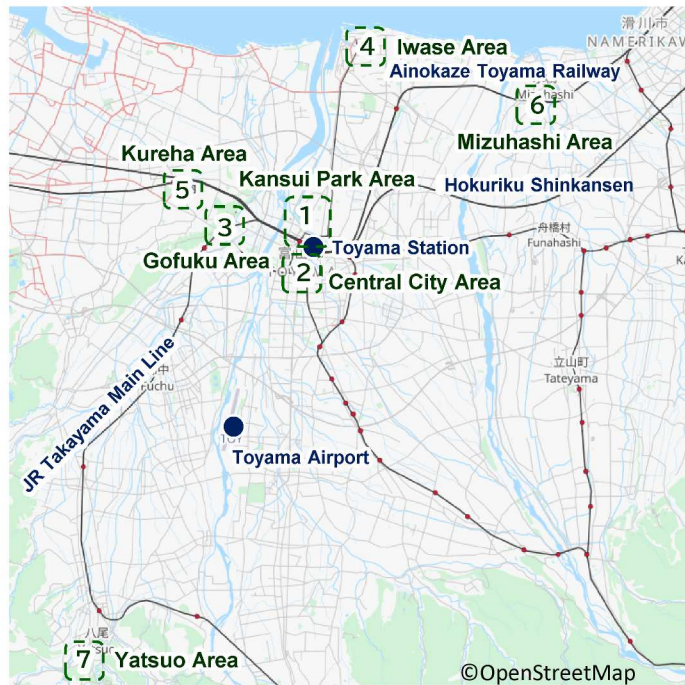
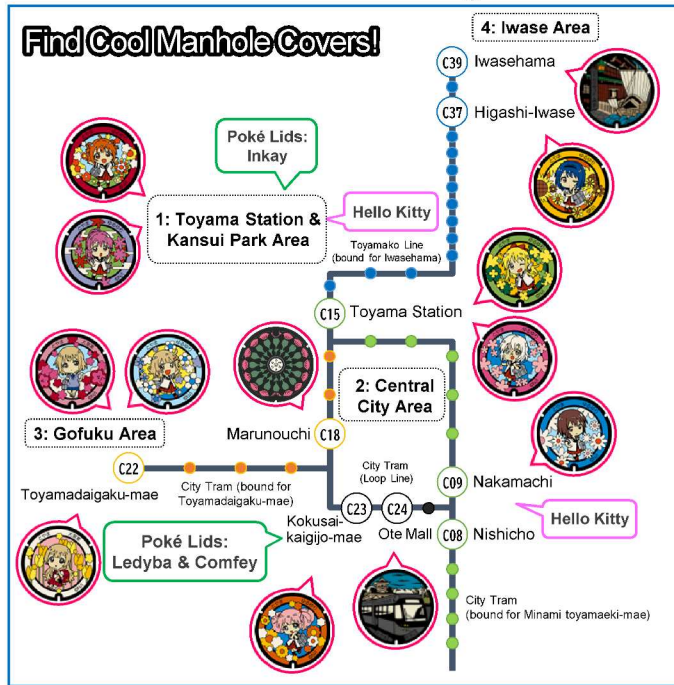
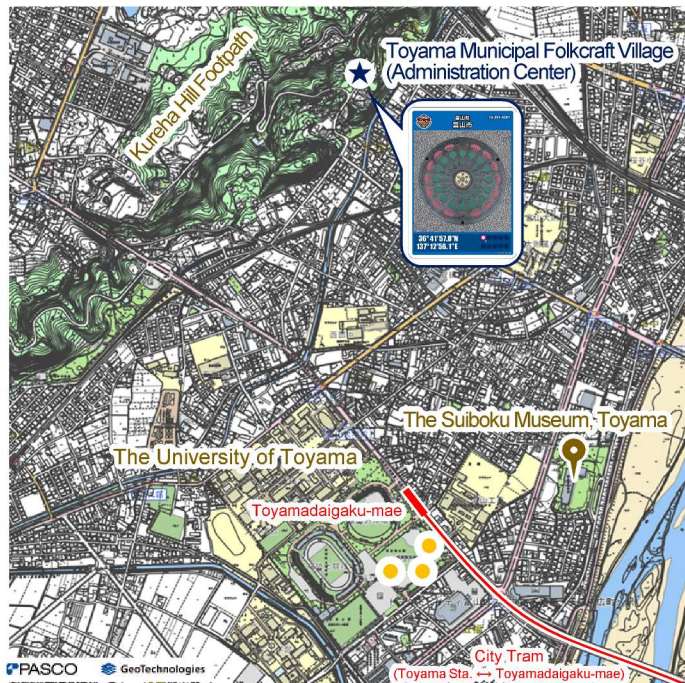


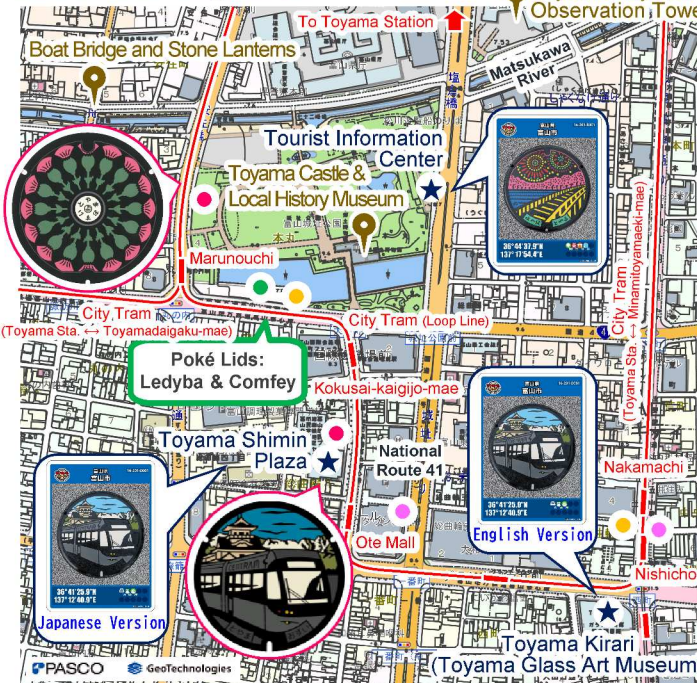
Where to Find Decorative Manhole Covers in Toyama



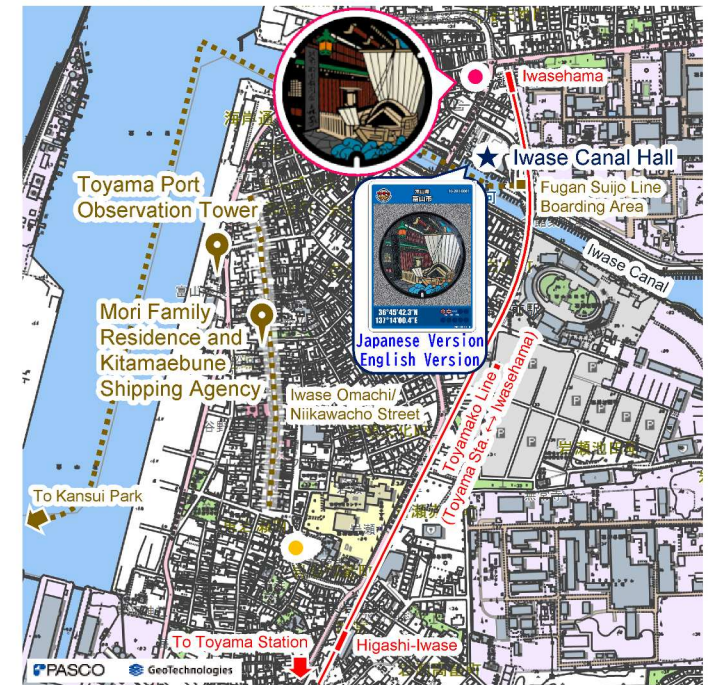
3. Gofuku Area



2. Central City Area



4. Iwase Area



1. Toyama Station & Kansui Park Area



Key to Manhole Covers ● YURUYURI & OHMUROKE ● Poké Lids ● Hello Kitty ● Other

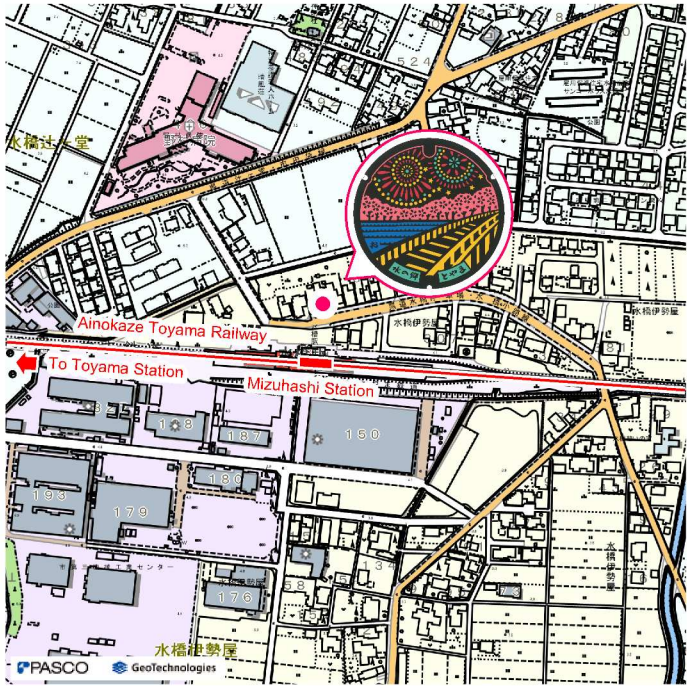
5. Kureha Area



7. Yatsuo Area



6. Mizuhashi Area



Other Manhole Cover Maps

Pokémon Utility Hole Covers
Poké Lids

YURUYURI & OHMUROKE
Manhole Cover Maps

Information

Decorative Manhole Covers

Manhole Cover Cards

Where and When Cards Are Available, and Getting There from Toyama Station

1. Toyama Station & Kansui Park Area

AKARI AKAZA from YURUYURI

Information Center for Tram and Other Public Transportation
73-5 Meirin-cho, Toyama City
9:00 to 13:30 and 14:30 to 17:00, 7 days a week
!! Toyama Station (City Tram Toyama Sta. stop, Platform 8 side)

Boat Bridge and Stone Lanterns

Weekdays: Toyama City Waterworks and Sewerage Bureau
(Water Supply and Drainage Service Division on the 1st floor)
2-1-20 Ushijimahon-machi, Toyama City
Weekdays 8:30 to 17:15 (Closed for new year holidays)
!! 15 min. walk from Toyama Station North Exit

2. Central City Area

Toyama Castle and Tram (Japanese Version)

Toyama Shimin Plaza 1F Administration Office
6-14 Ote-machi, Toyama City
9:00 to 17:00, 7 days a week (Closed Jan. 1)
1 min. walk from City Tram Ote Mall stop

Toyama Castle and Tram (English Version)

Toyama Kirari (Toyama Glass Art Museum) 1F Information and Help Desk
5-1 Nishi-cho, Toyama City
9:30 to 17:00, 7 days a week
(Closed 1st Wed. of each month, new year holidays, and occasionally on other days)
1 min. walk from City Tram Nishicho stop

Mizuhashi Bridge Festival and the Tozai Bridge

Toyama City Tourist Information Center
1-45 Honmaru, Toyama City
9:00 to 17:30 Mar. 16 through Nov. 30, 9:00 to 17:00 Dec. 1 through Mar. 15
(Closed for new year holidays)
2 min. walk from City Tram Kokusai-kaigijo-mae stop

3. Gohuku Area

Thistle Flowers

Toyama Municipal Folkcraft Village
1118-1 Anyoubou, Toyama City
9:00 to 16:30, 7 days a week
(Closed for new year holidays, and occasionally on other days)
1 min. walk from City Tram Ote Mall stop

4. Iwase Area

Mori Family Residence and Kitamaebune Shipping Agency (Japanese Version, English Version)

Iwase Canal Hall 1F Administration Office
48 Iwasetenjin-machi, Toyama City
9:00 to 17:00, 7 days a week (Closed for new year holidays)
1 min. walk from City Tram Iwasehama stop

5. Kureha Area

Boat Bridge and Stone Lanterns

Weekends: Toyama Art Creation Center reception desk
2247-3 Kureha-machi, Toyama City
10:00 to 17:00 on weekends and holidays
(Closed for new year holidays, and occasionally on other days)
5 min. walk from Ainokaze Toyama Railway Kureha Sta.

7. Yatsuo Area

Etchu-Yatsuo Owara Kaze no Bon Festival (Japanese Version, English Version)

Etchu-Yatsuo Tourism Association
2898-1, Yatsuomachikamishin-machi, Toyama City
Every day 9:00 to 17:00 (closed for new year holidays)
5 min. walk from Toyama Chitetsu Bus Yatsuoka Kagami-machi stop