

Toyama City Tsunami Hazard Map

⑤ Hagiura/Toyota/Okudakita Surroundings (Detailed area map)

“Have a proper familiarity with tsunamis and be prepared for when one comes.”

This Toyama City Tsunami Hazard Map was prepared based on the results of a survey on assumed flooding by tsunamis conducted by the Toyama Prefectural Government in 2016. It shows flooding situations caused by maximum-level tsunamis that may occur in the future, evacuation sites and directions, and other relevant information.

How to Evacuate from a Tsunami

A shift in the seabed during an earthquake triggers a vertical shock in the sea water, resulting in a tsunami. Do not wait until after a tsunami comes to evacuate. Please do so as soon as you feel shaking.

Disaster in progress
 An earthquake has occurred!
 After 1-5 min. After 5+ min.

When you are in an assumed flooding area
 Secure your personal safety
 Evacuate immediately
 Run outside the assumed flooding area

When you are inside an evacuation target area
 Remain calm and shut off the gas or stove
 Call out to others to evacuate
 Start evacuating as you call out to each other

When you are outside an evacuation target area
 Keep the door open to secure an exit
 If flooding has already begun, evacuate to the upper floors of buildings
 Confirm the designated emergency evacuation sites and high buildings around your house.

Evacuate to a safe location
 ● Obtain accurate information on the tsunami
 ● Move to a safer location
 ● Verify whether people are safe after you have evacuated

Following the Disaster
 If you are unable to go about your daily life in your home, please relocate to a city-designated evacuation site.

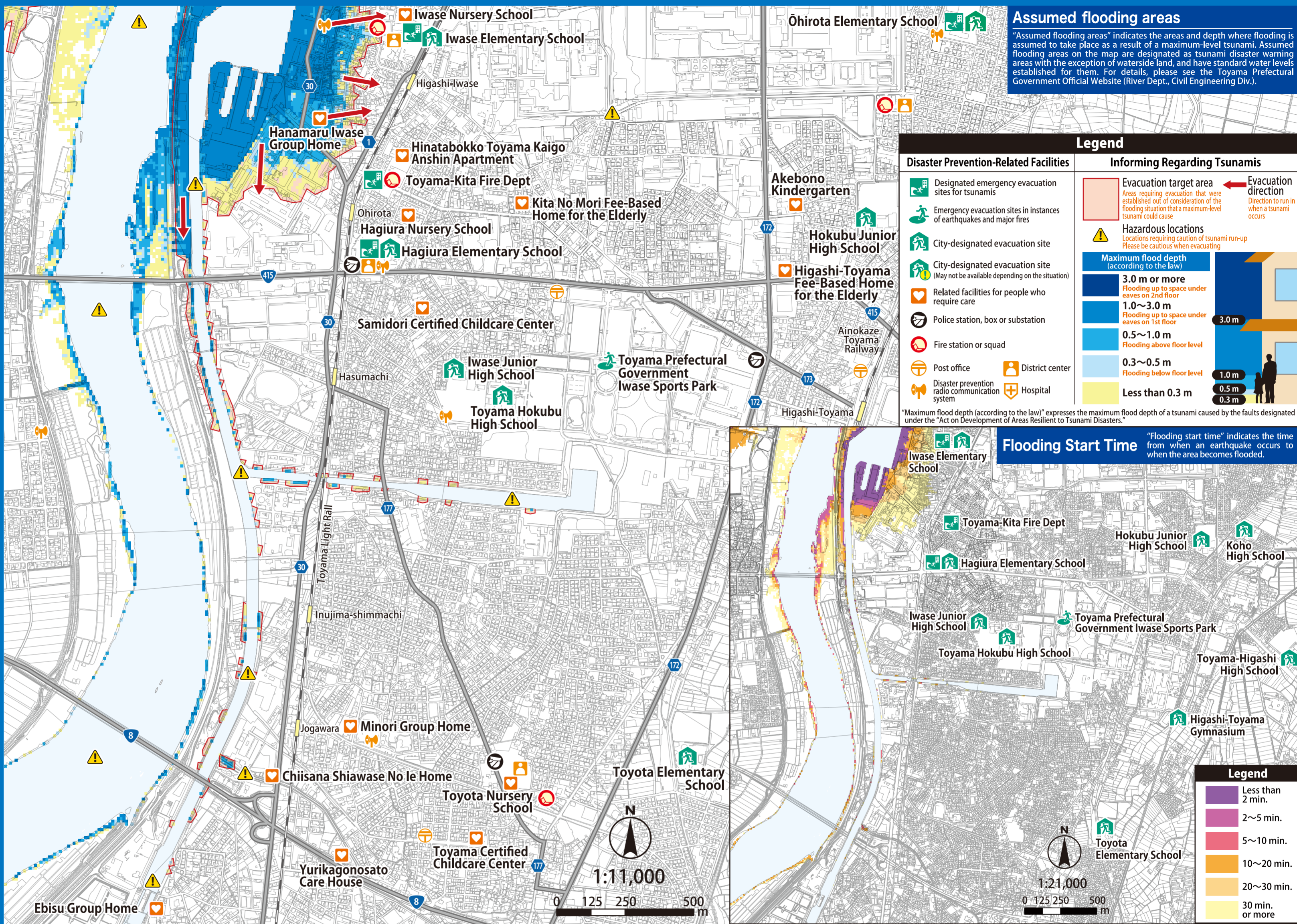
Designated emergency evacuation sites for tsunamis (Hagiura/Toyota/Okudakita Surroundings)
 When the earthquake occurs, evacuate to a safe place for following the evacuation direction shown on the map. Toyama city designates the tsunami evacuation sites as shown below.

| Elementary School Block | Name | TEL | Remarks |
|-------------------------|---------------------------|----------|------------------------------------------------------------|
| Hagiura | Hagiura Elementary School | 437-9619 | Can be used as primary evacuation site following disaster. |
| Hagiura | Toyama-Kita Fire Dept | 437-7141 | — |
| Iwase | Iwase Elementary School | 437-9871 | Can be used as primary evacuation site following disaster. |
| Ōhirota | Ōhirota Elementary School | 438-5115 | Can be used as primary evacuation site following disaster. |

Rules for Your Family

- Make your family way to the evacuation site on foot with all members accounted for.
- While actually making your way to the site, try identifying roads that are easy to traverse as well as hazardous locations.
- Fill in your family's gathering spot and contact information.

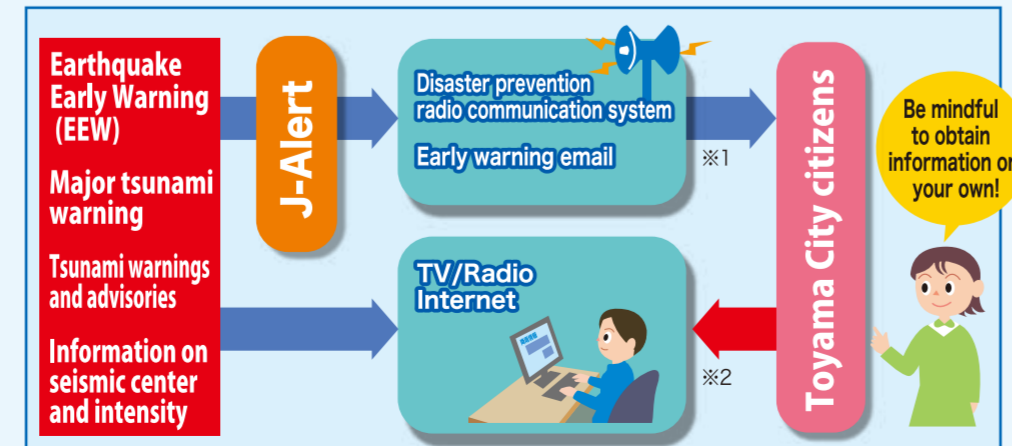
| Our Family's Gathering Spot | Evacuation Site for Our Family | |
|-----------------------------|--------------------------------|-----|
| Name | Name | TEL |
| | | |
| TEL | | |



In the preparation of this map, base map information issued by the Geospatial Information Authority of Japan (GSI) was used with the approval of the GSI Director-General. (Approval No.: 2018 JO-SHI, No. 530) この地図の作成に当たっては、国土地理院長の承認を得て、同院発行の基礎地図情報を使用した。(承認番号 平30情使、第530号)

How to Get Disaster Information

During a tsunami or earthquake, use the TV, Radio, Internet or other means to obtain accurate information, and take action in a calm and collected manner.



※1: Push-type information: Information communicated by the Toyama Municipal Government and other government entities to the citizens of Toyama City.
 ※2: Pull-type information: Information that the citizens of Toyama City obtain on their own.

About Major Tsunami Warnings, Tsunami Warnings and Advisories

When there is a risk of a tsunami, the citizens of Toyama City are asked to use all means at their disposal, including loudspeaker vans, the disaster prevention radio communication system, Community FM radio, cable TV, the Internet and early warning email, and to encourage their fellow citizens to evacuate to a safe location.

| Type | Standards for Broadcasting | Broadcast example |
|--------------------------------------------------------------------------------------------------|----------------------------------------------------------------------------------------------------------------------------|---------------------------------------------------------------------------------------------------------------------------------------------------------------|
| Major tsunami warning* (On level of Great East Japan Earthquake)Special warning | When a Great East Japan Earthquake-level tsunami with a forecasted height of over 3m is projected to hit Toyama Prefecture | Siren(Blowing for 3 seconds・2 seconds pause. Repeat 3 times) "A big tsunami warning was announced. If you are near the coast, evacuate to a higher place." |
| Major tsunami warnings* (On level other than that of Great East Japan Earthquake)Special warning | When a tsunami with a forecasted height of over 3m is projected to hit Toyama Prefecture | Siren(Blowing for 5 seconds・6 seconds pause. Repeat 2 times) "A tsunami warning was announced. If you are near the coast, evacuate to a higher place." |
| Tsunami warning | When a tsunami with a forecasted height of over 1m but not above than 3m is projected to hit Toyama Prefecture | Siren(Blowing for 5 seconds・6 seconds pause. Repeat 2 times) "A tsunami warning was announced. Be careful if you are near the coast." |
| Tsunami advisory | When a tsunami with a forecasted height of at least 0.2m but not above than 1m is projected to hit Toyama Prefecture | "A tsunami warning was announced. Be careful if you are near the coast." |

*Major tsunami warnings are positioned as special tsunami warnings by the Japan Meteorological Agency. If you are unable to hear the warning when it is broadcast, missed the broadcast, or could not hear it well, please call the below number to use the voice broadcast telephone service. TEL: 076-433-5090 (Automatic service available 24 hours a day)

Request to Citizens of Toyama City

Please conduct sufficient drills on a regular basis so that you can calmly evacuate and perform emergency activities when a tsunami or other disaster occurs. It is recommended that you actively participate in the evacuation drills such as those held by the Toyama City or those conducted at individual elementary schools.

