

# Toyama City Tsunami Hazard Map

## ③ Mizuhashi Chubu Surroundings (Detailed area map)

**“Have a proper familiarity with tsunamis and be prepared for when one comes.”**

This Toyama City Tsunami Hazard Map was prepared based on the results of a survey on assumed flooding by tsunamis conducted by the Toyama Prefectural Government in 2016. It shows flooding situations caused by maximum-level tsunamis that may occur in the future, evacuation sites and directions, and other relevant information.

### How to Evacuate from a Tsunami

A shift in the seabed during an earthquake triggers a vertical shock in the sea water, resulting in a tsunami. Do not wait until after a tsunami comes to evacuate. Please do so as soon as you feel shaking.

**An earthquake has occurred!** **Disaster in progress**

After 1-5 min. After 5+ min.

**When you are in an assumed flooding area**

**Secure your personal safety**  
Run outside the assumed flooding area

**Evacuate immediately**  
Run outside the assumed flooding area

**Run outside the evacuation target area**

- Distance yourself from beaches and rivers
- Try to get yourself to as high a location as possible
- Run on foot as a general rule

**When you are inside an evacuation target area**

**Remain calm and shut off the gas or stove**

**Call out to others to evacuate**  
Start evacuating as you call out to each other

**Evacuate to a safe location**

- Obtain accurate information on the tsunami
- Move to a safer location
- Verify whether people are safe after you have evacuated

**When you are outside an evacuation target area**

**Keep the door open to secure an exit**

If flooding has already begun, evacuate to the upper floors of buildings

Confirm the designated emergency evacuation sites and high buildings around your house.

**Gathering information on evacuation**

- Verify tsunami warnings and advisories
- Evacuate immediately if you sense danger

**Following the Disaster** If you are unable to go about your daily life in your home, please relocate to a city-designated evacuation site.

### Designated emergency evacuation sites for tsunamis (Mizuhashi Chubu surroundings)

When the earthquake occurs, evacuate to a safe place for following the evacuation direction shown on the map. Toyama city designates the tsunami evacuation sites as shown below.

Elementary School Block	Name	TEL	Remarks
Mizuhashi Chubu	Mizuhashi Chubu Community Center	478-0019	-
Mizuhashi Chubu	Mizuhashi Chubu Elementary School	478-0103	Can be used as primary evacuation site following disaster.
Mizuhashi Chubu	Mizuhashi Junior High School	478-0029	-
Mizuhashi Chubu	Mizuhashi Fire Dept	478-0061	-
Mizuhashi Chubu	Mizuhashi Nakamura Municipal Housing	-	-
Mizuhashi Chubu	Muse Parking Lot (Shopping Centre)	479-1700	-
Mizuhashi Seibu	Mizuhashi Seibu Elementary School	478-0067	Can be used as primary evacuation site following disaster.
Mizuhashi Seibu	Mizuhashi Purification Center Mechanical Tower	478-2984	-
Mizuhashi Seibu	Mizuhashi Fisharina Multi-Purpose Plaza	482-3939	-

\*Primary evacuation sites\* refers to evacuation sites that are opened first. These mainly consist of elementary school gymnasiums.  
\*\*Please note that these may not be available during non-school hours, holidays, etc.

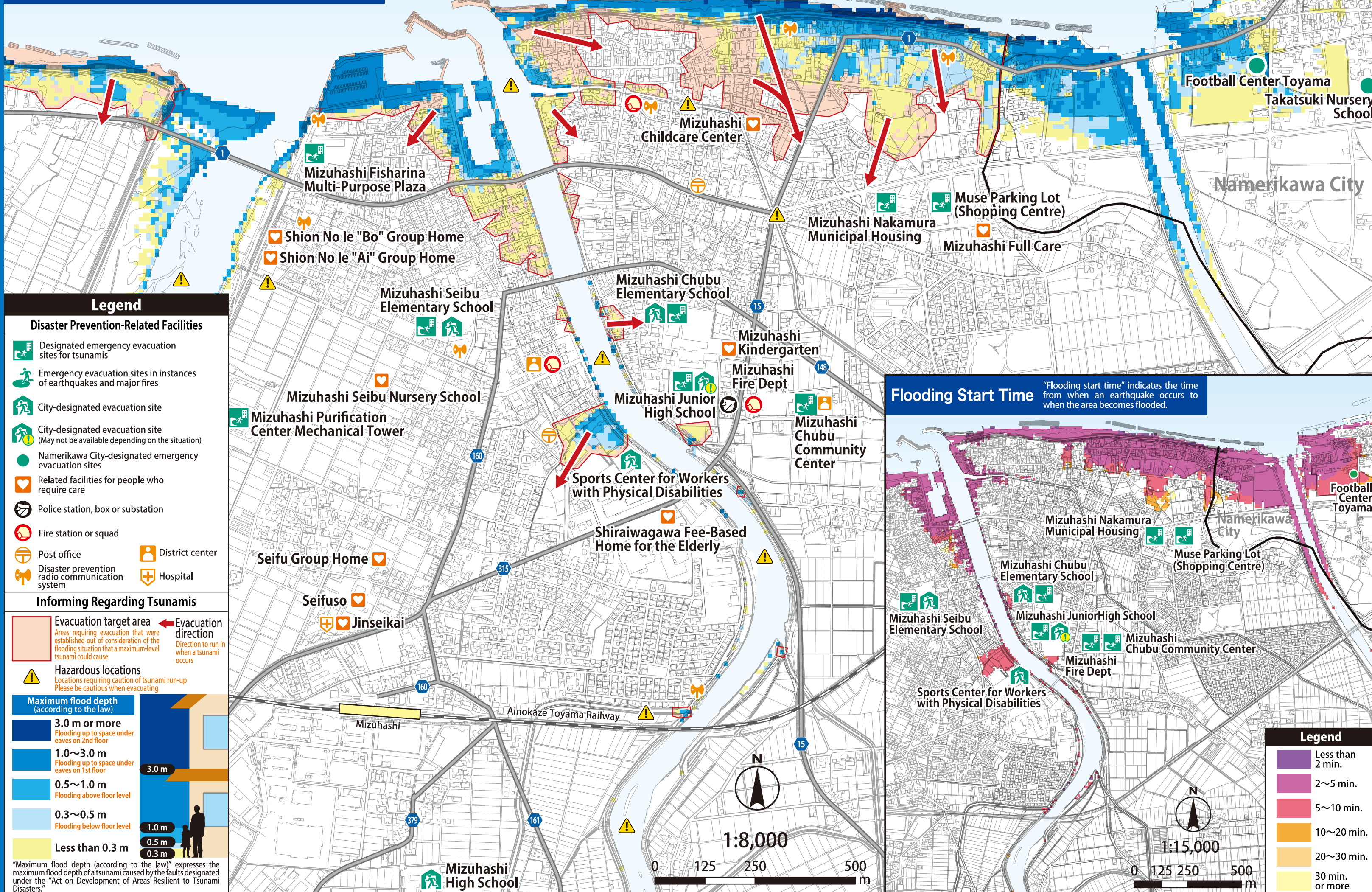
### Rules for Your Family

- Make your family way to the evacuation site on foot with all members accounted for.
- While actually making your way to the site, try identifying roads that are easy to traverse as well as hazardous locations.
- Fill in your family's gathering spot and contact information.

Our Family's Gathering Spot	Evacuation Site for Our Family	
Name	Name	TEL
TEL		

### Assumed flooding areas

"Assumed flooding areas" indicates the areas and depth where flooding is assumed to take place as a result of a maximum-level tsunami. Assumed flooding areas on the map are designated as tsunami disaster warning areas with the exception of waterside land, and have standard water levels established for them. For details, please see the Toyama Prefectural Government Official Website (River Dept., Civil Engineering Div.).

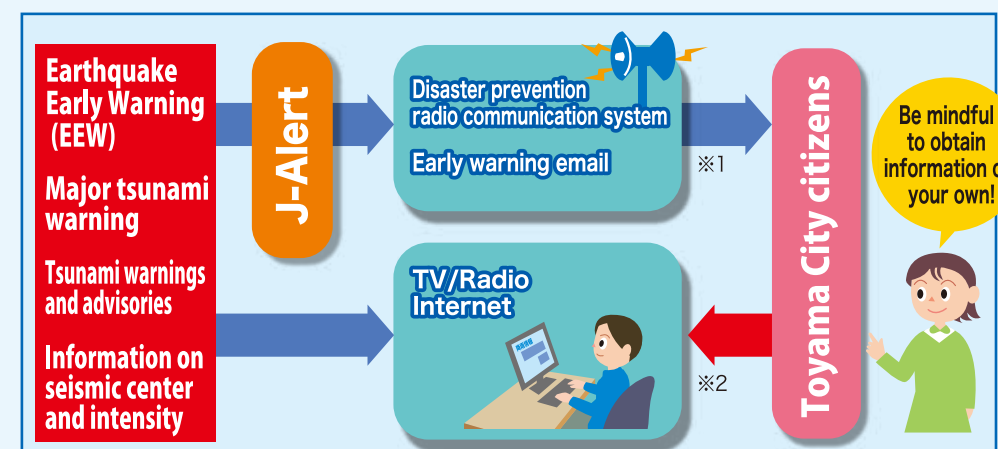


In the preparation of this map, base map information issued by the Geospatial Information Authority of Japan (GSI) was used with the approval of the GSI Director-General. (Approval No.: 2018 JO-SHI, No. 530)

この地図の作成に当たっては、国土地理院長の承認を得て、同院発行の基礎地図情報を使用した。(承認番号 平30情使、第530号)

### How to Get Disaster Information

During a tsunami or earthquake, use the TV, Radio, Internet or other means to obtain accurate information, and take action in a calm and collected manner.



※1: Push-type information: Information communicated by the Toyama Municipal Government and other government entities to the citizens of Toyama City.  
※2: Pull-type information: Information that the citizens of Toyama City obtain on their own.

### About Major Tsunami Warnings, Tsunami Warnings and Advisories

When there is a risk of a tsunami, the citizens of Toyama City are asked to use all means at their disposal, including loudspeaker vans, the disaster prevention radio communication system, Community FM radio, cable TV, the Internet and early warning email, and to encourage their fellow citizens to evacuate to a safe location.

Type	Standards for Broadcasting	Broadcast example
Major tsunami warning* (On level of Great East Japan Earthquake)Special warning	When a Great East Japan Earthquake-level tsunami with a forecasted height of over 3m is projected to hit Toyama Prefecture	Siren(Blowing for 3 seconds・2 seconds pause. Repeat 3 times) "A big tsunami warning was announced. If you are near the coast, evacuate to a higher place."
Major tsunami warnings* (On level other than that of Great East Japan Earthquake)Special warning	When a tsunami with a forecasted height of over 3m is projected to hit Toyama Prefecture	Siren(Blowing for 5 seconds・6 seconds pause. Repeat 2 times) "A tsunami warning was announced. If you are near the coast, evacuate to a higher place."
Tsunami warning	When a tsunami with a forecasted height of over 1m but not above than 3m is projected to hit Toyama Prefecture	Siren(Blowing for 5 seconds・6 seconds pause. Repeat 2 times) "A tsunami warning was announced. Be careful if you are near the coast."
Tsunami advisory	When a tsunami with a forecasted height of at least 0.2m but not above than 1m is projected to hit Toyama Prefecture	"A tsunami warning was announced. Be careful if you are near the coast."

※Major tsunami warnings are positioned as special tsunami warnings by the Japan Meteorological Agency. If you are unable to hear the warning when it is broadcast, missed the broadcast, or could not hear it well, please call the below number to use the voice broadcast telephone service. TEL: 076-433-5090 (Automatic service available 24 hours a day)

### Request to Citizens of Toyama City

Please conduct sufficient drills on a regular basis so that you can calmly evacuate and perform emergency activities when a tsunami or other disaster occurs. It is recommended that you actively participate in the evacuation drills such as those held by the Toyama City or those conducted at individual elementary schools.

